

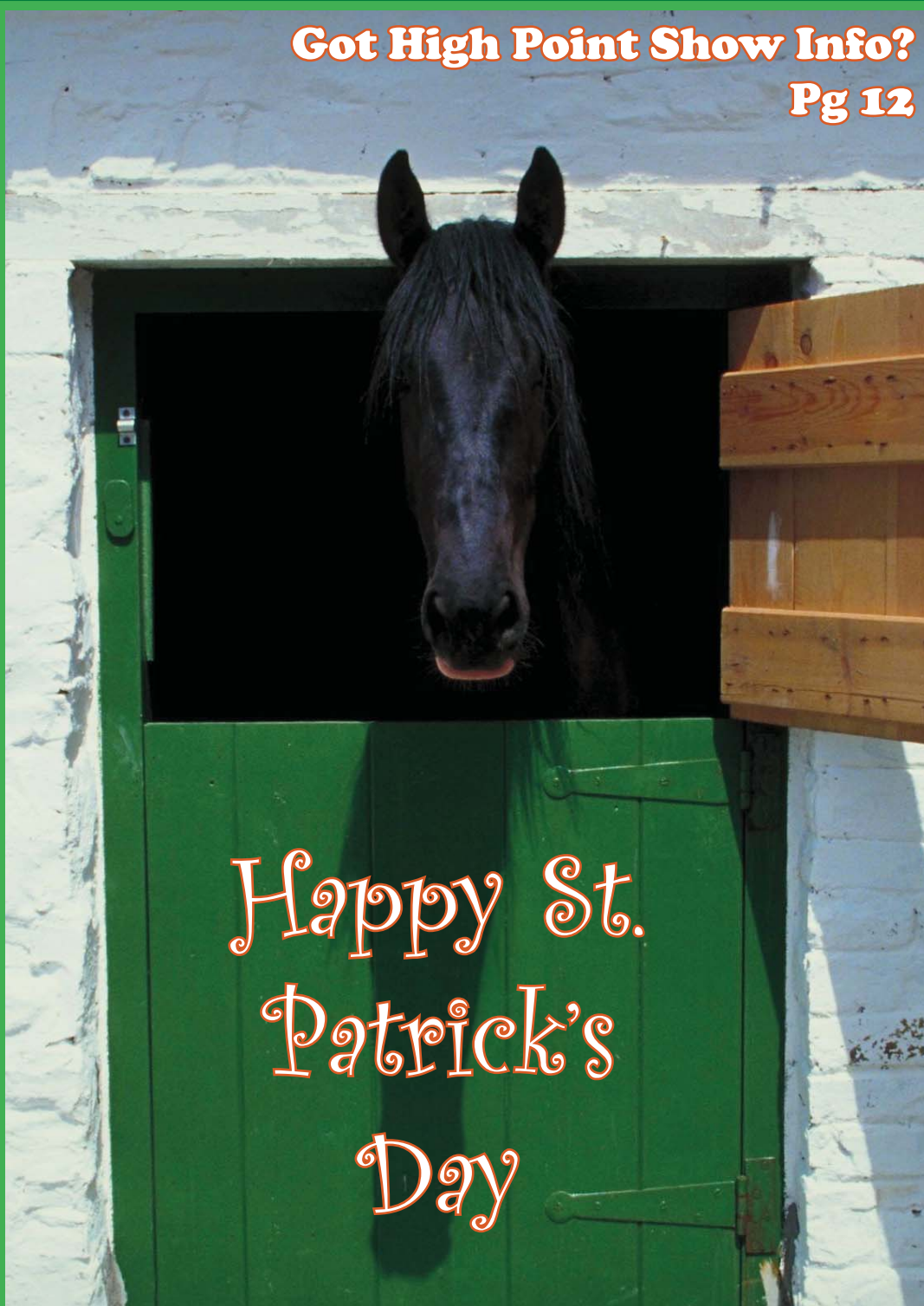
Equestrian Trails, Inc.

Official Publication of Equestrian Trails, Inc.
Serving equestrians since 1944

Volume 17, Issue 3

March 2017

**Got High Point Show Info?
Pg 12**



**Happy St.
Patrick's
Day**

*Dedicated to Equine Legislation, Good Horsemanship, and the
Acquisition and Preservation of Trails, Open Space and Public Lands*

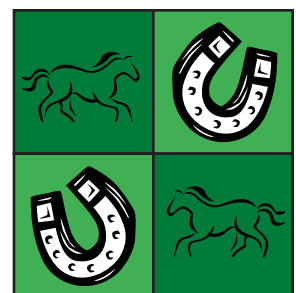
Inside this issue:

Horse Latitude	9
National Trail Coordinator's Message	10
2016 High Point Award Winners	16
Jr. Ambassadors' Trail Trial	18
Spring Ride Application	19
2017 High Point Gymkhana	21
2017 Corral Officer Directory	22
Who We Are - Corral 14	28

Upcoming Events

High Point Shows
Gymkhanas
Trail Trials & Rides

See pages 5-9



ETI Contact Info

PRESIDENT: **Tom Kirsch**
tkirsch98@gmail.com (310) 871-9458

1st VICE PRESIDENT: **Dawn Surprenant**
equinediva@hughes.net (661) 433-9069

2nd VICE PRESIDENT: **Jay Geisenheimer**
sunnydayfarm@earthlink.net (818) 469-5473

IMMEDIATE PAST PRESIDENT: **Linda Fullerton**
Linda@wrightcolor.com (818) 401-9089

NATIONAL TRAIL COORDINATOR: **Lynn Brown**
akalynnbrown@aol.com (323) 876-6858

DEPUTY TRAIL COORDINATOR: **Terry Kaiser**
hdconcerns@ca.rr.com (818) 262-0315

AREA TRAIL COORDINATOR: **Elaine Macdonald**
emac43031@gmail.com
(661) 946-1976

BOARD OF DIRECTORS

Area 3 (Corrals: 2, 3, 15, 35) **Dottie Hilliard**
equidot@aol.com (626) 335-7112

Area 4 (Corrals: 66, 70, 88, 103) **VACANT**

Area 5 (Corrals: 14, 65, 83, 99) **Patty Hug**
pattyhug@ca.rr.com (818) 367-2056

Area 6 (Corrals: 22, 36, 54) **Ivy Murrillo**
poyzoniv19@yahoo.com (626) 318-2503

Area 7 (Corrals: 10, 12, 20, 34, 38, 210) **Terry Kaiser**
hdconcerns@ca.rr.com (818) 262-0315

Area 8 (Corrals: 37, 57, 118, 126) **VACANT**

Area 9 (Corrals: 6, 43) **VACANT**

Area 11 (Corrals: 9, 21, 77, 86, 138, 777)
Karen Dagnan karenqdagnan74@gmail.com
(661) 268-8771

Area 12 (Corrals: 8, 357) **VACANT**

Area 13 (At-large members) **VACANT**



Equestrian Trails, Inc.

www.etinational.com

P.O. Box 1138
Acton, CA 93510
Phone: (818) 698-6200
Office Hours: 9:00 am—4:00 pm
Monday—Thursday (closed Fri)



Michelle Kraut - Office Manager, Membership, Insurance
Sarah Williams - Magazine, Website

Convention: convention@etinational.com
High Point: highpoint@etinational.com
Insurance: insurance@etinational.com
Magazine: magazine@etinational.com
Membership: membership@etinational.com
Office: office@etinational.com
President's Office: president@etinational.com
Website: webmaster@etinational.com

Contents

- 4 MAU Program Update / Easter Egg Hunt
- 5 Coming Events Calendar
- 9 Horse Latitude **NEW FEATURE**
- 10 National Trail Coordinator's Message
- 12 2017 National High Point Show Schedule
- 13 2017 National High Point Entry Form
- 14 2017 National High Point Divisions List
- 15 2017 National High Point Class List
- 16 2016 National High Point Award Winners
- 18 Jr. Ambassador Trail Trial
- 19 31st Annual Spring Ride Application
- 20 Trail Riding by Pat Fish
- 21 2017 High Point Gymkhana Schedule/Entry Form
- 22 2017 Corral Officer Directory
- 26 Kids' Corner
- 28 Who We Are - Corral 14 Western Wagons
- 29 Corral News
- 33 Photo Highlights from Presidents' Luncheon
- 35 Announcements
- 36 ETI National Programs





A Message from Tom Kirsch ETI National President

Wow! 2017 is really flying by. March is all ready here. It's been a tough year on trails and animals, as well as, humans so far.

We had our Presidents' luncheon the 11th of February. We want to thank the Rose Bowl Riders for the use of their club house. We had a good turn out and some great discussion about our problems. Hopefully, we will get on track for membership drives and fundraisers for ETI.



We are in the process of getting bids for insurance for the year. This is always a scary subject with insurance companies. I should have some information for you next month. Until then, get out and ride or show...show the powers to be that we are here!

Tom



Make sure to "like"
us on facebook!
Search for
"Equestrian Trials, Inc."

National Board Meeting
March 21 at 7pm
Foothill Trails District
Neighborhood Council Office
9747 Weatland Ave.
(Corner of Wheatland & Sunland)

Join us!

ETI SPECIAL EVENTS CHAIRPERSONS

ETI MOUNTED ASSISTANCE UNIT: Coordinator: Jean Chadsey (909) 967-2065 Jeanieac@aol.com
 2017 SPRING RIDE (June 4-10): Kelli Land horseqrtrs@yahoo.com Jeanie Gonzalez gilnjean@outlook.com
 2017 CONVENTION (June 22-25): Co-Chairs: Michelle Kraut (818) 698-6200 office@etinational.com Dawn Surprenant (661) 433-9069 equinediva@hughes.net
 ETI TRAIL RIDER AWARD PROGRAM (TRAP): Carol Elliott (760) 963-8209 happy2appy@yahoo.com
 ETI TRAIL TRIALS PROGRAM: ETI Office (818) 698-6200 equestriantrails@outlook.com
 ETI HIGH POINT SHOW PROGRAM: Co-Chairs: Kim Estrada (818) 497-4730 rockbacknzip@aol.com Laurel Surprenant (661) 212-7713 equinediva@hughes.net
 ETI HIGH POINT GYMKHANA PROGRAM: Tracy Boldroff/Maddie Patriarca eticorral21@yahoo.com



Mounted Assistance Unit (MAU) Program Update



The ETI officers had a meeting this month that was very informative and was attended by many dedicated horse community members, whose goals are always looking toward the future of the horse community. The MAU's part in this service is the hours of community service we volunteer on the trails by patrolling and reporting to the parks and recreation any concerns that we may feel is a concern to the park patrons. This could be from a fallen tree, homeless encampment, and or graffiti. When we report, the park officials have been spectacular in addressing these safety concerns.

When you see us on the trail, come say hello and introduce yourselves.

The MAU's look forward to all the events we can be of service to in 2017. I appreciate all the dedication and service of these wonderful horse people.

There are three MAU's which patrol the LA Parks on horseback, if you are interested in joining, the contact e-mails are listed below.

Bonelli MAU - kbarro@msn.com

Whittier Narrows MAU - Kteamthompson@aol.com

Walnut Creek MAU - schaubcindi@aol.com

Jean A. Chadsey
 ETI MAU Coordinator
Jeanieac@aol.com
 (909) 967-2065



Monthly Find the Egg Contest

If you're reading this online, look for active links and surprise "easter eggs"!



When you see this, click for a link.



When you see this symbol, click for a surprise!

To enter the contest, find all the "eggs", write down the name of the video, then send your list to magazine@etinternational.com! Winner will be randomly drawn from all those with the correct answers!



Equestrian Trails Inc.

Coming Events Calendar

NATIONAL CONTACTS

www.etinational.com

(818) 698-6200

P.O. Box 1138, Acton CA 93510

Email addresses:

convention@etinational.com

highpoint@etinational.com

insurance@etinational.com

magazine@etinational.com

membership@etinational.com

office@etinational.com

president@etinational.com

webmaster@etinational.com

2017 NATIONAL EVENTS

June 4-10

Spring Ride, Tehachapi, Bear Valley

June 22-25

National Horse Show & Convention, LAEC

November 3-10

ETI Death Valley Ride

2017 Season High Point Shows

For High Point Show info Contact:

Co-Chairs: Kim Estrada (818) 497-4730

rockbacknzip@aol.com Laurel

Surprenant (661) 212-7713 equinediva@hughes.net

All ETI High Point Shows are PAC approved.

April 23/Corral 118

SVAC & National High Point Show, Arroyo/ Gateway Eq Center, Simi Valley

May 21/Corral 37

Red Hat Cowgirl Buckle Series and High Point Show, Conejo Creek Eq Park, Thousand Oaks

June 4/Corral 118

SVAC & National High Point Show, Arroyo/ Gateway Eq Center, Simi Valley

June 22-25

National Horse Show & Convention, LAEC

August 20/Jr. Ambassadors

High Point Show, Conejo Creek Eq Park, Thousand Oaks

August 27/Corral 118

SVAC & National High Point Show, Arroyo/ Gateway Eq Center, Simi Valley

October 8/Corral 118

SVAC & National High Point Show, Arroyo/ Gateway Eq Center, Simi Valley

October 22/Corral 118

SVAC & National High Point Show, Arroyo/ Gateway Eq Center, Simi Valley

October 29/Jr. Ambassadors DOUBLE HIGH POINT

High Point Show, Conejo Creek Eq Park, Thousand Oaks

November 12/Corral 37

Red Hat Cowgirl Buckle Series and High Point Show, Conejo Creek Eq Park, Thousand Oaks

2017 Gymkhana High Point Season

High Point Program through Oct.

Contact: Tracy Boldroff or Maddie Patriarca at eticorral21@yahoo.com

Start time 8am at Oak Creek Corral 27345 Sand Canyon Rd, Canyon Country

March 25

April 22

April 29 (rain date from Jan 28)

State Finals – May 20

Individual Corral Circuit Shows/Series

Corral 6, Circuit Open Shows

Laramore Arena; Mira Loma, Jurupa Call Gina (951) 681-4456 or robynandlanden@yahoo.com

Corral 8/Rolling Hills Estates

English only. Held at Ernie Howlett Park. Contact: Dan etipresident@aol.com (310) 530-5618 www.eticorral8.com

Corral 37/Thousand Oaks

Red Hat Cowgirl Buckle Series - 5 Shows -8:15am registration Contact: Sharyn Henry redhatcowgirl@yahoo.com

Corral 57/Ojai

Open Shows at Ojai's Soule Park arena Contact: Rhonda (805) 798-1713

Corral 118/Simi Horse Shows

SVAC Western & English Shows.

High point saddle award

Contact: Terry Simon (805) 522-3346

horseladyusa1@yahoo.com

www.eti118.org

CLINICS

Corral 36 Riding Classes

Wed @ 9am Agoura Equestrian Center with Karen Curtis Contact: Jeanne Wallace (818) 222-2560

GYMKHANAS

Corral 21

Race for the Saddle Gymkhana Series. Contact: Tracy Boldroff or Maddie Patriarca eticorral21@yahoo.com

Corral 43/Riverside Rancheros

Gymkhana Call Lyn (951) 780-7208

TRAIL TRIAL

April 2/Jr. Ambassadors

MS Trail Trial, Vasquez Rooks Contact: Michelle Kraut (661) 575-7281 office@etinational.com

April 8/Corral 20

Trail Trial, Hansen Dam Contact: Deb Mader (818) 653-7628 debramader@yahoo.com

2017 ETI Trail Rides, Drives, Events

When a Corral plans a ride at Vasquez Rocks, as a courtesy, please call the Rangers (661) 268-0840



MARACH

March 2/Corral 83

Mojave ride Contact: Carol rhellyer3@gmail.com

March 4/Corral 138

Joshua Ranch ride Contact: Andria and Dawn ADW11451@aol.com

March 5/Corral 12

Trailblazer ride, Acton Contact: Jeanne (661) 212-8313

**Equestrian Trails Inc.****Coming Events Calendar****March 11/Corral 20**

Griffith Park/Viva's lunch ride Contact:
Becky Borquez (818) 262-7764
beckyborquez@gmail.com

March 12/Corral 22

Wildwood Ride, Santa Rosa Trail
Boss: Paul Jacques Contact: Kathleen
Ungamrung (626) 590-6972
kathleen.ungamrung@gmail.com

March 12/Corral 86

Angeles Crest ride Contact: Karen Dagnan
(661) 268-8771

March 18/Corral 9

Hansen Dam St Patrick's ride Cost: \$15 pay
no later than March 7 if plan to attend
Contact: Dennis Hosack (661) 733-1885

March 18/Corral 22

Day at the Races, Santa Anita Contact:
Kathleen Ungamrung (626) 590-6972
kathleen.ungamrung@gmail.com

March 18/Corral 103

St Patricks Day Ride, O'Hills Ranch,
Oak Hills. Corn beef & cabbage lunch
following. Sign up 9; ride out 10.
Contact: Lou Griggs (760-885-6077)

March 19/Corral 138

Obstacle day at Dual Star Ranch,
Pearblossom Contact: Kimberly
(661) 478-2770 jdwright@aol.com

March 25/Corral 21

High Point Gymkhana, Canyon Country
Contact: Tracy Boldroff or Maddie
Patriarca Eticorral21@yahoo.com

March 25/Corral 357

Swallows Day Parade Contact: Jimmy
(714) 612-1789

March 26/Corral 12

Monthly Trail Ride, Vasquez Rocks
Contact: Patty Hug (818) 367-2056

March 26/Corral 37

Red Hat Cowgirl Buckle Series Show,
Conejo Creek Eq Park, Thousand Oaks
Contact: www.eticorral37.org

APRIL**April 2/Jr. Ambassadors**

MS Trail Trial, Vasquez Rooks Contact:
Michelle Kraut (661) 575-7281
office@etinational.com

April 6-9/Corral 86

Pioneer Town Camping, Yukaipa Contact:
Hannah Haggia (661) 208-0021

April 8/Corral 20

Trail Trial, Hansen Dam Contact: Deb
Mader (818) 653-7628
debramader@yahoo.com

April 9/Corral 357

Saddle Back Butte Contact: Michael Cook
(661) 341-2750

April 9/Corral 22

John Richardson Memorial Ride, Vasquez
Rocks Trail Boss: Sharon Richardson/
Al Pechulis Contact: Sharon Richardson
(661) 268-0754 RidinwCruz@gmail.com

April 9/Corral 138

Quigley Canyon ride, Irene's Ranch
Contact: Kimberly (661) 478-2770
jdwright@aol.com

April 16/Corral 357

Horsemanship clinic Contact: Sue
(949) 858-8001

April 21-23/Corral 14

Denzel Cameron Memorial Drive,
Moonraker Ranch, Mojave Contact: Katie
Christman (661) 824-2609 or Sue Martzolf
(760) 662-6102

April 21-23/Corral 22

Pioneertown Tiffanie Bailey (818) 522-
9923 mtpocketsranch1@aol.com

April 22/Corral 21

High Point Gymkhana, Canyon Country
Contact: Tracy Boldroff or Maddie
Patriarca Eticorral21@yahoo.com

April 22/Corral 86

Van Looney Ride Contact: Larry & Sharon
Van Loon (661) 816-9000

April 22/Corral 357

Sensory Clinic with Marc Hedgpeth, O'Neill
Park Contact: Crystal Hansen (949) 207-
8921 crystalghansen@me.com

April 23/Corral 118

SVAC & National High Point Show, Arroyo/
Gateway Eq Center, Simi Valley Contact
SVAC: Terry Simon (805) 522-3346
horseladyusa1@yahoo.com Contact NHP:
Kim Estrada rockbacknzip@aol.com or
Laurel Surprenant equinediva@hughes.net

April 22/Corral 21**RAIN DATE from 1/28**

High Point Gymkhana, Canyon Country
Contact: Tracy Boldroff or Maddie
Patriarca Eticorral21@yahoo.com

April 29/Corral 12

Monthly Trail Ride, Cheeseboro Canyon
Contact: Patty Hug (818) 367-2056

April 29/Corral 103

Carol's Memorial Ride at Smiths Ranch,
Phelan. Sign up 9:00; ride out at 10.
Contact: Lou Griggs (760-885-6077)

April 29/Corral 138

Saddleback Butte State Park ride/
lunch Contact: Elaine (661) 946-1976
emac43031@gmail.com

April 29/Corral 357

Month end ride Contact: Heather (949)
702-0137

April 30/Corral 37

Dressage Clinic, Conejo Creek Eq Park,
Thousand Oaks Contact:
www.eticorral37.org

MAY**May 6/Corral 22**

Challenger Park Ride, Simi Valley Trail
Boss: Lisa Sommerhauser Contact:
Kathleen Ungamrung (626) 590-6972
kathleen.ungamrung@gmail.com

May 6/Corral 86

Playday, Vincent Hill Contact: Karen
Dagnan (661) 268-8771

May 7/Corral 357

Playday, O'Neill Park Contact: Jimmy
(714) 612-1789

May 13/Corral 12

Monthly trail ride at JPL, Pasadena
Contact: Patty Hug (818) 367-2056

May 13-19/Corral 14

Lone Pine to Bishop Wagon Train
Contact: Norm Noftsier (661) 270-1161 or
Sue Martzolf (760) 662-6102

May 19-21/Corral 22

Tehachapi Ride Trail Boss: Susan Jackson
Contact: Kathleen Ungamrung (626) 590-
6972 kathleen.ungamrung@gmail.com



Equestrian Trails Inc.

Coming Events Calendar

May 19-21/Corral 357

Casper's Campout Contact: Debbie (949) 244-0670

May 20/Corral 20

Sheep Loop, Little Tujunga Canyon
Contact: Deb Mader (818) 653-7628
debramader@yahoo.com

May 20/Corral 21

High Point Gymkhana State Finals, Canyon Country Contact: Tracy Boldroff or Maddie Patriarca Eticorral21@yahoo.com

May 21/Corral 12

"Make Your Horse Count" Licensing Clinic Stetson Ranch, Sylmar Contact: Patty Hug (818) 367-2056

May 21/Corral 37

Red Hat Cowgirl Buckle Series/High Point Show, Conejo Creek Eq Park, Thousand Oaks Contact Buckle Series: www.eticorral37.org Contact NHP: Kim Estrada rockbacknzip@aol.com or Laurel Surprenant equinediva@hughes.net

May 21/Corral 86

Paramount Ranch ride Contact: Laurie Henry (661) 644-4555

May 21/Corral 138

MT. Emma/Angeles Forest ride Contact: Toni haighart@mac.com

JUNE

June 1-4/Corral 86

Montana de Oro Camping Contact: Troy & Gary Stairs (661) 714-9873

June 4/Corral 2

Schooling Show at Rose Bowl Riders Contact: Betsy Coles (626) 864-4865

June 4-10

Spring Ride, Tehachapi, Bear Valley Contact: Kelli Land horseqrtrs@yahoo.com Jeanie Gonzalez gijnjean@outlook.com

June 4/Corral 37

Day of the Horse Contact: www.eticorral37.org

June 4/Corral 118

SVAC & National High Point Show, Arroyo/Gateway Eq Center, Simi Valley Contact SVAC: Terry Simon (805) 522-3346 horseladyusa1@yahoo.com Contact NHP: Kim Estrada rockbacknzip@aol.com or Laurel Surprenant equinediva@hughes.net

June 9-11/Corral 14

Jim and Julie Porter Annual Drive – Onyx, CA Contact: Porters – (760) 378-2222 or Sue Martzolf (760) 662-6102

June 9-11/Corral 138

Tehachapi Camping trip Contact: Laura (661) 433-8616 mybech1@gmail.com

June 17/Corral 86

Oak Grove/JPL ride Contact: David & Melissa Haggia (661) 733-7807

June 17/Corral 357

Poker ride, O'Neill Park Contact: Crystal (949) 207-8921

June 22-25

National Horse Show & Convention, LAEC Contact: Michelle Kraut office@etinational.com

JULY

July 8/Corral 9

Inspiration Point ride Contact: Pamela Sharp (760) 803-8756

July 8/Corral 12

Moonlight ride and dinner at Griffith Park Contact: Patty Hug (818) 367-2056

July 8/Corral 22

Moonlight Ride, Lakeview Terrace Trail Boss: Tiffanie Bailey Contact: Kathleen Ungamrung (626) 590-6972 kathleen.ungamrung@gmail.com

July 11/Corral 12

Vet Clinic/Pot Luck at Cheri Blose's Home Contact: Patty Hug (818) 367-2056

July 15/Corral 9

Mt Pinos Frazier Park Contact: Melissa Haggai (661) 733-7807

July 15/Corral 138

Zig Zag ride, Littlerock 9am Contact: Kimberly (661) 478-2770 jdwright@aol.com

July 20-23/Corral 86

Montana De Oro camping Contact: Karen Dagnan (661) 268-8771

July 22/Corral 138

Stallion Springs ride Contact: Raul rpgemini50@msn.com

July 29/Corral 22

Inspiration Point Ride, Wrightwood Trail Boss: Susan Jackson/Billie McGuire Contact: Kathleen Ungamrung (626) 590-6972 kathleen.ungamrung@gmail.com

July 29/Corral 357

Month end ride Contact: Heather (949) 702-0137

AUGUST

August 1-7/Corral 20

Camping/Riding, Montana de Oro Contact: Becky Borquez (818) 262-7764 beckyborquez1@gmail.com

August 5/Corral 357

Pancake Fundraiser Contact: Kristen (949) 444-1990

August 5/Corral 86

Moonlight ride, Vasquez Rocks Contact: Rich Simpson (661) 714-8712

August 8/Corral 12

Ice Cream Social, Cheri Blose Home Contact: Patty Hug (818) 367-2056

August 19/Corral 138

Inspiration Point ride Contact: Raul rpgemini50@msn.com

August 20/Jr. Ambassadors

High Point Show, Conejo Creek Eq Park, Thousand Oaks Contact SVAC: Michelle Kraut (661) 575-7281 office@etinational.com Contact NHP: Kim Estrada rockbacknzip@aol.com or Laurel Surprenant equinediva@hughes.net

August 21-27/Corral 12

Morro Bay Camping Trip Contact: Patty Hug (818) 367-2056

August 21-28/Corral 22

Morro Bay Ride, Montana de Oro State Park Trail Boss: Kathleen Smart Contact: Kathleen Ungamrung (626) 590-6972 kathleen.ungamrung@gmail.com

August 26/Corral 20

"Beat the Heat" breakfast ride, Hansen Dam Contact: Deb Mader (818) 653-7628 debramader@yahoo.com

August 26/Corral 357

Month end ride Contact: Heather (949) 702-0137



**Equestrian Trails Inc.****Coming Events Calendar****August 27/Corral 118**

SVAC & National High Point Show, Arroyo/
Gateway Eq Center, Simi Valley Contact
SVAC: Terry Simon (805) 522-3346
horseladyusa1@yahoo.com Contact NHP:
Kim Estrada rockbacknzip@aol.com or
Laurel Surprenant equinediva@hughes.net

SEPTEMBER**September 9/Corral 86**

Norco ride Contact: Karen Dagnan (661)
268-8771

September 16/Corral 20

Wildwood Wilderness Park, Thousand Oaks
Contact: Becky Borquez (818) 262-7764
beckyborquez@gmail.com

September 17/Corral 22

Mt. Pinos Ride Trail Boss: Tiffanie Bailey
Contact: Kathleen Ungamrung (626) 590-
6972 kathleen.ungamrung@gmail.com

September 21-24/Corral 86

Rancho Oso camping Contact: Karen
Dagnan (661) 268-8771

September 23/Corral 12

Hansen Dam trail ride Contact: Patty Hug
(818) 367-2056

September 23/Corral 357

Playday & BBQ, O'Neill Park Contact:
Jimmy (714) 612-1789

September 24/Corral 37

Red Hat Cowgirl Buckle Series, Conejo
Creek Eq Park, Thousand Oaks Contact:
www.eticorral37.org

September 29 - October 1/Corral 14

Fall Drive – Long Ears Ranch – Mojave, CA
Contact: Mara Wada (760) 822-8546 or
Sue Martzolf (760) 662-6102

September 30/Corral 357

Month end ride Contact: Heather
(949) 702-0137

OCTOBER**October 6-9/Corral 20**

Caspers Wilderness Park, San Juan
Capistrano Contact: Nikki Ahten (818)
489-6527 imakowgirl@hotmail.com

October 8/Corral 9

Owl Canyon ride Contact: Ray
Drasher (661) 944-4359

October 8/Corral 86

Debby Does Acton ride Contact:
Debby Arter (661) 816-4345

October 8/Corral 118

SVAC & National High Point Show, Arroyo/
Gateway Eq Center, Simi Valley Contact
SVAC: Terry Simon (805) 522-3346
horseladyusa1@yahoo.com Contact NHP:
Kim Estrada rockbacknzip@aol.com or
Laurel Surprenant equinediva@hughes.net

October 15/Corral 12

Trail ride, Acton Contact: Patty Hug (818)
367-2056

October 15/Corral 37

Red Hat Cowgirl Buckle Series, Conejo
Creek Eq Park, Thousand Oaks Contact:
www.eticorral37.org

October 20-22/Corral 22

Sage Hill Ride, Live Oak Trail Boss: Paul
Jacques Contact: Kathleen Ungamrung
(626) 590-6972
kathleen.ungamrung@gmail.com

October 21/Corral 357

Imperial Beach ride Contact: Rich (714)
504-7001

October 22/Corral 118

SVAC & National High Point Show, Arroyo/
Gateway Eq Center, Simi Valley Contact
SVAC: Terry Simon (805) 522-3346
horseladyusa1@yahoo.com Contact NHP:
Kim Estrada rockbacknzip@aol.com or
Laurel Surprenant equinediva@hughes.net

October 28/Corrals 9, 86 & 138

Halloween costume ride Contact: Karen
Dagnan (661) 268-8771

October 28/Corral 357

Month end ride Contact: Heather
(949) 702-0137

**October 29/Jr. Ambassadors
DOUBLE HIGH POINTS**

High Point Show, Conejo Creek Eq
Park, Thousand Oaks Contact SVAC:
Michelle Kraut (661) 575-7281 [office@
etinational.com](mailto:office@etinational.com) Contact NHP: Kim
Estrada rockbacknzip@aol.com or Laurel
Surprenant equinediva@hughes.net

October 30 - November 3/Corral 14

Pahrump to Shoshone Drive (tentative)
Contact: Sue Martzolf (760) 662-6102

NOVEMBER**November 3-10**

ETI Death Valley Ride

November 4/Corral 20

Devil's Punchbowl, Juniper Hills
Contact: Becky Borquez (818) 262-7764
beckyborquez@gmail.com

November 4/Corral 138

Mescal Canyons ride Contact: Elaine (661)
946-1976 emac43031@gmail.com

November 6 – 10/Corral 14

Death Valley Drive Contact: Sue Martzolf
(760) 662-6102

November 12/Corral 37

Red Hat Cowgirl Buckle Series/High Point
Show, Conejo Creek Eq Park, Thousand
Oaks Contact: www.eticorral37.org
Contact NHP: Kim Estrada
rockbacknzip@aol.com or Laurel
Surprenant equinediva@hughes.net

November 18/Corral 12

"Turkey Ride", Sylmar Contact: Patty Hug
(818) 367-2056

November 19/Corral 22

Le Chene ride Contact: Sharon Richardson
(661) 268-0754 RidinwCruz@gmail.com

November 18/Corral 86

Pancake breakfast auction/poker ride
Contact: Heather Kaufman (661) 360-5151

November 26/Corral 357

Month end ride Contact: Heather
(949) 702-0137

DECEMBER**December 2/Corral 86**

Haggai Hills Ride, Palmdale Contact: The
Haggai's (661) 733-7807

December 3/Corral 138

Christmas Toy ride Sunday Contact: Laura
(661) 433-8616 mybech1@gmail.com

December 9/Corral 20

Ho Ho Ho ride, Stonehurst Park
Contact: Linda Fullerton (818) 612-3305
lindawrightcolor8@gmail.com

December 9/Corral 357

Laguna Niguel Holiday Parade Contact:
Jimmy (714) 612-1789



Equestrian Trails Inc.

December 17/Corral 22

Christmas Ride, Griffith Park Trail
Boss: Paul Jacques Contact: Kathleen
Ungamrung (626) 590-6972
kathleen.ungamrung@gmail.com

December 30/Corral 357

Month end ride Contact: Heather (949)
702-0137

NON-ETI EVENTS

April 8

Vasquez Rocks with the Palmdale Sheriff
Station from 10 AM – 3 PM. Contact: TBD

April 29

Honoring Slain Officer Steve Owen

L.A. Sheriff's Inaugural Trail ride, Jack
Bones Eq Center, Castaic from 7am-6pm
Cost: between \$50 and \$30 depending on
if you want to come for the breakfast, ride,
BBQ, and auction. Contact: (213) 229-
3347 asbensah@lasd.org

April 30

Fiesta Charity "Mane Event"

Charity Horse Show, LAEC Contact: (818)
842-8444 www.fiestacharityshow.com



I would like to welcome you
to Horse Latitudes, a new
feature of the ETI magazine.

Starting next month, it will be my pleasure to be writing
articles for Horse Latitudes that pertain to general
horse related subjects.

The subjects of Horse Latitudes will cover a wide
range, from horse book reviews, YouTube horse video
reviews, interviews with renown equine veterinarians,
industry leading farriers, movie, show and race horse
trainers, AHSA judges, equine authors and profiles on
famous contemporary horses.

As each municipal election time comes around, I will
be interviewing City and County candidates whose
districts contain horse keeping properties. I know
it would be interesting reading the opinion of these
candidates regarding the awareness of equine related
matters. Present incumbent office holders will be

Coming Events Calendar

May 6

Annual Hogs N Horses, Vincent Hill Station
Cost: \$35 for riders & \$20 for just lunch.

May 6

34th Annual Pick-a-Colt Day® Production
Sale, Lazy K Ranch, Chowchilla, CA. Info
at www.LazyKRanch.com

May 27-30

Mustangs In The Wild Fundraising Ride for Dusty's Riders

Horseback expedition near Bishop tracking
wild mustangs. Live like a cowboy.
innerstoryretreats.com/mustangs-in-the-wild-expedition

AVDR Gymkhana

Antelope Valley Desert Riders
Contact: Doug (661) 944-6133
www.avdesertriders.org

Carousel Ranch

Therapeutic Riding Program
(661) 268-8010

Compton Jr. Posse - Mayisha Akbar

Compton Jr. Posse Youth Eq.
(310) 632-1247 www.jrposse.com

Dusty's Riders



Horse program for at-risk kids (323)
876-3079 www.dustysriders.org

ELSA

Experience.Learning.Support.w/Animals
Therapeutic riding program
(310) 403-966 www.elsainc.org

Hi-Desert Horsemen's Assoc

Open Horse Shows Contact: Jean
(661) 943-6132 hidesertha@aol.com

Head's Up Therapy on Horseback

Nancy (818) 848-0870
www.headsuptherapy.com

Ride On Therapeutic Horsemanship

program for disabled riders
(818) 700-2971
www.rideon.org

Shadow Hills Riding Club

Therapeutic Riding Program

Contact Johnny: (818) 352-2166
www.shadowhillsridingclub.org



Horse Latitudes

Written by Jeannine Roman

interviewed to discuss their positions regarding current
and future equine issues in their districts, how they will
impact horse ownership and our ability to enjoy our
"city" horses.

For many, many years one of the most notable aspects
of the ETI magazine has been the direct involvement
of ETI members in supporting the magazine through
article submissions. I hope your support will extend to
the articles published in Horse Latitudes. I welcome
you to email me with your suggestions for interviews
and articles or if you are just curious about something
that you would like researched.

I'll look forward to hearing from you.

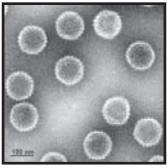
Jeannine Roman
Email: silverjym@hotmail.com





Trail Coordinator's Message

Written by Lynn Brown, Corral 38



This message is from Dr. Flynn, veterinarian for the California Dept. of Food and Agriculture (CDFA). If you have more questions, go to: cdfa.ca.gov/ahfss/animal_health/equine_herpes_virus.html

Equine Herpesvirus Update Response to EHV-1 in California

The mission of the Animal Health Branch (AHB) of California Department of Food and Agriculture is to protect animal health. The Branch is responsible for developing and implementing effective animal health regulations and ensuring utilization of science-based disease control measures to control regulated diseases.

The department's reportable disease lists includes, emergency conditions, regulatory conditions, and monitored conditions. Emergency and regulatory conditions require timely regulatory response to a detection which includes issuance of a quarantine and implementation of disease control measures. No regulatory action is taken for monitored conditions as these conditions are assessed for geographic and seasonal distribution.

In California, Equine Herpesvirus-1 (EHV-1) is listed as a monitored condition and Equine Herpesvirus Myeloencephalopathy (EHM) is listed as a regulatory condition. Based on this classification, laboratory detections of EHV-1 in horses are monitored for geographic and seasonal distribution. However, regulatory action is taken for cases of EHM, the neurological disease associated with EHV-1 infection. Specifically, a quarantine is applied at time of confirmation of an EHM case, with each situation individually evaluated to determine the most appropriate quarantine parameters.

In California, Animal Health Branch (AHB) veterinarians will work with private practitioners to assess the premises biosecurity practices, the horse health monitoring system and feasibility of isolation of suspect and confirmed cases before determining extent of the quarantine. Facilities with poor biosecurity, minimal horse health monitoring and an inability to isolate, will likely have a more prolonged quarantine of the premises. In comparison, a premises where

the index EHM case is immediately removed and excellent routine disease management practices implemented (twice daily temperature monitoring, isolating suspect horses and implementing enhanced biosecurity measures) may only have a small group of exposed horses quarantined for fourteen (14) days.

Three Recent EHM Incidents in California November 2016 – January 2017 EHM Incidents

Los Angeles Equestrian Center

On November 3, 2016, a five year-old Saddlebred displaying severe neurologic signs and a 10 year-old Saddlebred displaying moderate neurologic signs were confirmed positive for the non-neuropathogenic strain of Equine Herpesvirus-1 at the California Animal Health and Food Safety Laboratory. Due the severity of signs the five year-old was euthanized. Within one hour of laboratory confirmation of Equine Herpesvirus Myeloencephalopathy (EHM), the department issued a quarantine for all horses stabled in Barn A of the Los Angeles Equestrian Center (LAEC) and ordered certain enhanced biosecurity measures for those horses.

The biosecurity measures required that all exposed horses remain within the designated quarantine area to be held for observation for clinical signs compatible with EHV-1, and that the horses have their temperatures taken twice daily.

A total of fifteen (15) confirmed cases were identified at the LAEC during the quarantine period. Eight (8) of those cases were confirmed EHM cases and seven (7) of the cases were febrile cases without neurologic signs. Quarantine was released on January 27, 2017.

Inyo County Incident

On December 3, 2016, a 20 year-old quarter horse gelding displaying mild neurologic signs on a high desert ranch in Inyo County was confirmed positive for the neuropathogenic strain of Equine Herpesvirus-1. The gelding is part of a winter pack string of twenty-eight (28) horses and four (4) mules. The premises was quarantined with enhanced biosecurity requirements. One additional equine herpesvirus myeloencephalopathy and one EHV-1 positive febrile case



Trail Coordinator's Message Written by Lynn Brown, Corral 38

were confirmed on the premises. All horses and mules were isolated in individual pens which limited disease spread. Quarantine was released on December 29, 2016.

Whispering Willow

On January 201, 2017, a 12 year-old Quarter Horse mare displaying severe neurologic signs was confirmed positive for the wild type (non-neuropathogenic) Equine Herpesvirus-1 in the nasal swab and blood. Due to the severity of clinical signs the horse was euthanized. The premises of 56 exposed horses in Los Angeles County was quarantined and all horses were monitored for clinical signs with twice daily temperature monitoring. One additional 32 year-old horse

on the property displaying a fever tested positive for the wild type of EHV-1 in the nasal swab and blood. No additional cases were detected and the quarantine was released on January 31, 2017.

As of today, February 9, 2017, there are no premises in California under quarantine for EHV-1.

UPDATE: As of February 22, the California Dept of Food and Agriculture (CDFA) has identified a recent occurrence of EHV-1 in one horse in San Diego County. The horse exhibited signs of EHM. It is quarantined in its home barn and is recovering well.

What is Equine Herpes Virus?

- * EHV-1 and EHV-4 are also known as Rhinopneumonitis
- * EHV-1 causes respiratory disease, abortion and neurologic disease
- * EHV-4 causes respiratory disease and infrequent abortions.
- * Rarely (1 case) EHV-4 causes neurologic disease



Display Your Equestrian Pride!



ETI Bell logo
Small 3" x 4" for inside vehicle window \$3.00

8" X 10" for gate or trailer \$6.00



United We Ride \$3.00



Shot in Time Photography
Capturing Your Moments
Events ~ Shows ~ Family Portraits



Margaret Scott www.shotinetime.com
661-335-2189



Got Trails? Stickers \$5.00
Available in White or Black



ETI NATIONAL HIGH POINT NEW SEASON APRIL - DECEMBER 2017



PHOTOS COURTESY OF: SHOTINTIME.COM



APRIL 23/CORRAL 118
HIGH POINT HORSE SHOW
SIMI VALLEY
CONTACT: TERRY SIMON
(818) 522-3346
HORSELADYUSA1@YAHOO.COM

MAY 21/CORRAL 37
HIGH POINT HORSE SHOW
THOUSAND OAKS
CONTACT: SHARYN HENRY
REDHATCOWGIRL@YAHOO.COM

JUNE 4/CORRAL 118
HIGH POINT HORSE SHOW
SIMI VALLEY
CONTACT: TERRY SIMON
(818) 522-3346
HORSELADYUSA1@YAHOO.COM

**JUNE 22-25/NATIONAL HORSE
SHOW: CONVENTION**
LAEC, BURBANK
CONTACT: MICHELLE KRAUT
OFFICE@ETINATIONAL.COM

AUGUST 20/JR. AMBASSADORS
HIGH POINT HORSE SHOW
THOUSAND OAKS
CONTACT: MICHELLE KRAUT
(661) 575-7281
OFFICE@ETINATIONAL.COM

AUGUST 27/CORRAL 118
HIGH POINT HORSE SHOW
SIMI VALLEY
CONTACT: TERRY SIMON
(818) 522-3346
HORSELADYUSA1@YAHOO.COM

OCTOBER 8/CORRAL 118
HIGH POINT HORSE SHOW
SIMI VALLEY
CONTACT: TERRY SIMON
(818) 522-3346
HORSELADYUSA1@YAHOO.COM

OCTOBER 22/CORRAL 118
HIGH POINT HORSE SHOW
SIMI VALLEY
CONTACT: TERRY SIMON
(818) 522-3346
HORSELADYUSA1@YAHOO.COM

OCTOBER 29/JR. AMBASSADORS
DOUBLE HIGH POINT HORSE SHOW
THOUSAND OAKS
CONTACT: MICHELLE KRAUT
(661) 575-7281
OFFICE@ETINATIONAL.COM

NOVEMBER 12/CORRAL 37
HIGH POINT HORSE SHOW
THOUSAND OAKS
CONTACT: SHARYN HENRY
REDHATCOWGIRL@YAHOO.COM

FOR MORE INFORMATION ABOUT THE HIGH POINT PROGRAM, PLEASE CONTACT
CO-CHAIRS: KIM ESTRADA (818) 497-4730 ROCKBACKNZIP@AOL.COM
LAUREL SURPRENANT (661) 212-7713 EQUINEDIVA@HUGHES.NET





**EQUESTRIAN TRAILS INC. NATIONAL HORSE SHOW CIRCUIT
ETI National High Point Program
2017 Registration Form**

ONE FORM PER HORSE/RIDER COMBINATION
(Forms WILL NOT be accepted without proof of payment)

Rider Name: _____ **D.O.B.** _____

Address: _____

City: _____ **State:** CA **Zip:** _____

Phone: _____ **Fax:** _____ **Email:** _____

Name of Equine: _____ **Age:** _____

Equine Owner: _____

Breed: _____ **Stallion** **Gelding** **Mare**

ETI Corral #: _____ **Membership Expiration Date:** _____

PLEASE PRINT Register as English, Western or Ranch Horse

Class #	Class Name	E	W	R	Amount

The fee for the year is \$15.00 per class or 6 classes for \$75.00

Individual Classes: _____ x \$15.00 = \$ _____
 Classes: 6 = \$75.00 = \$ _____
 Total = \$ _____

Check payable to Equestrian Trails Inc.

ETI National High Point Rules may be obtained via email from the High Point Chair

For information or questions, please contact:

Kim Estrada, High Point Chair, at 818-497-4730 or rockbacknzip@aol.com

Laurel Surprenant, High Point Chair, at 661-212-7713 or equinediva@hughes.net

Mail completed form to: Kim Estrada, 26519 Thackery Lane, Stevenson Ranch, CA 91381



ETI National Horse Show Circuit 2017 Highpoint Divisions



Walk/Trot English 12 & Under 1, 15, 56, 62, 68, 69, 72	Walk/Trot English 13-18 1 or 2, 15 or 16, 58, 64, 68, 69, 74	Walk/Trot English 19 & Over ATR 3, 17, 60, 66, 68, 69, 76	
Walk/Trot Western 12 & Under 1, 37, 57, 63, 68, 69, 71	Walk/Trot Western 13-18 1 or 2, 37 or 39, 59, 65, 68, 69, 73	Walk/Trot Western 19 & Over ATR 3, 39, 61, 67, 68, 69, 75	
English 13 & Under 1, 15, 19, 23, 82	English 14-18 2, 16, 20, 24, 83	English 19 and over ATR 3, 17, 21, 25, 84	English Open 4, 18, 22, 26, 27, 28, 85
Western 13 & Under 1, 37, 41, 46, 78	Western 14-18 2, 38, 42, 47, 79	Western 19 and over ATR 3, 39, 43, 48, 80	Western Open 4, 40, 44, 45, 49, 51, 52, 81
Halter Open 6, 7, 8, 9, 10, 11, 12, 13, 14		Over Fences 29, 32, 33, 34, 35, 36	

ETI National is a High Point Circuit in order to qualify in a Year End Division Award you must participate in 80% of this circuit. "I.E." If we offer 10 shows you must participate in 8 shows.

*****Note over fence classes must show in 80% of the shows offering those classes*****

- « Check English or Western on application when signing up. Change of tack or attire starts points over
 - ◆ Walk/Trot may NOT enter lead line or loping/cantering classes.
 - ◀ May not enter any other Over Fences/Jumping classes except pony classes offered.
Trot Cross rail must be taken at the trot.
 - ✿ 1st and 2nd Year Green horses only.
 - Show chair may offer either as listed, or combined E/W
 - ☒ May not enter any non-lead line class.
 - Halter class entry is based on the horse; owner may assign someone as the handler.
 - ☒ Hunt Seat, Saddle Seat, Dressage or Side Saddle accepted.
- NO ONE UNDER THE AGE OF 18 MAY HANDLE OR SHOW A STALLION WHILE ON SHOW GROUNDS**

****NO REFUNDS WITHOUT VET CERTIFICATE****

Conducted under USEF, ASHA and ETI High Point Program Rules

Decision of Judge is final.

Unsportsmanlike conduct or abuse of horses

will result in disqualification and removal from show grounds.

Classes and/or divisions with 3 or fewer entrants may be cancelled or combined.

All mounted English riders must wear an ASTM approved helmet while on the show grounds.

I understand that as a competitor it is up to me to know all of the Rules contained in the High Point Program Rules and I will ask questions if I do not understand a particular rule or rules.

Competitor Signature

Horse Owner Signature

Parent or Guardian Signature, if under 18

Date of Application



ETI High Point/National Horse Show Circuit 2017 Class List -

HALTER/IN HAND

- 1. Showmanship in Hand W/E 13 & Under«
- 2. Showmanship in Hand W/E 14-18«
- 3. Showmanship in Hand W/E 19 & Over ATS«
- 4. Showmanship in Hand W/E Open«
- 5. Showmanship in Hand W/E Mini & Pony Open«
- 6. Halter Mini & Pony Open❖
- 7. Halter Mares Open❖
- 8. Halter Stallions & Geldings Open❖
- 9. Halter Yearlings & 2 yr olds Open❖
- 10. Halter Non-Color Open❖
- 11. Halter Color Open❖
- 12. Halter Open❖
- 13. Performance Halter Open❖
- 14. Vintage Halter Open❖



ENGLISH

- 15. Country Pleasure English 13 & Under●
- 16. Country Pleasure English 14 – 18●
- 17. Country Pleasure English 19 & Over ATR●
- 18. Country Pleasure English Open●
- 19. Hunt Seat Equitation 13 & Under
- 20. Hunt Seat Equitation 14 – 18
- 21. Hunt Seat Equitation 19 & Over ATR
- 22. Hunt Seat Equitation Open
- 23. Hunt Seat Pleasure 13 & Under
- 24. Hunt Seat Pleasure 14 – 18
- 25. Hunt Seat Pleasure 19 & Over ATR
- 26. Hunt Seat Pleasure Open
- 27. English Horsemanship Open⊠
- 28. Obedience English Open ⊠

OVER FENCES

- 29. Hunter Hack 1'6" – 2' Open
- 30. Trot Crossrail Equitation over Fences 1'6" – 2' Open ◀
- 31. Trot Crossrail Hunters, 1'6"- 2' Open ◀
- 32. Equitation Over Fences 2' – 2'3" Open
- 33. Working Hunters, 2' – 2'3" Open
- 34. Equitation Over Fences 2'6" – 2'9" Open
- 35. Working Hunters, 2'6" – 2'9" Open
- 36. Jumpers, 2'6"- 2'9" Open

WESTERN

- 37. Country Pleasure Western 13 & Under●
- 38. Country Pleasure Western 14 – 18●
- 39. Country Pleasure Western 19 & Over ATR●
- 40. Country Pleasure Western Open●
- 41. Western Equitation 13 & Under
- 42. Western Equitation 14 – 18
- 43. Western Equitation 19 & Over ATR
- 44. Western Equitation Open
- 45. Western Horsemanship Open
- 46. Western Pleasure 13 & Under

- 47. Western Pleasure 14 – 18
- 48. Western Pleasure 19 & Over ATR
- 49. Western Pleasure Open
- 50. Western Pleasure 1st & 2nd Year Green Open ✂
- 51. Obedience Western Open
- 52. Western Riding- Open

RANCH HORSE

- 53. Ranch Horse Reining Open
- 54. Ranch Horse Trail Open
- 55. Ranch Riding Open

WALK-TROT

- 56. Walk/Trot Equitation English 12 & Under ◆●⊠
- 57. Walk/Trot Equitation Western 12 & Under ◆●
- 58. Walk/Trot Equitation English 13 – 18 ◆●⊠
- 59. Walk/Trot Equitation Western 13 – 18 ◆●
- 60. Walk/Trot Equitation English 19 & Over ATR ◆●⊠
- 61. Walk/Trot Equitation Western 19 & Over ATR ◆●
- 62. Walk/Trot Pleasure English 12 & Under ◆●⊠
- 63. Walk/Trot Pleasure Western 12 & Under ◆●
- 64. Walk/Trot Pleasure English 13– 18 ◆●⊠
- 65. Walk/Trot Pleasure Western 13– 18 ◆●
- 66. Walk/Trot Pleasure English 19 & Over ATR ◆●⊠
- 67. Walk/Trot Pleasure Western 19 & Over ATR ◆●
- 68. Walk/Trot Obedience W/E ATR ◀◆●⊠
- 69. Walk/Trot Horsemanship W/E ATR ◀◆●⊠
- 70. Walk/Trot Vintage Pleasure W/E Open ◀◆●⊠

TRAIL

- 71. Trail Horse Walk/Trot W 12 & Under ◆●
- 72. Trail Horse Walk/Trot E 12 & Under ⊠◆●
- 73. Trail Horse Walk/Trot W 13 - 18 ◆●
- 74. Trail Horse Walk/Trot E 13-18 ⊠◆●
- 75. Trail Horse Walk/Trot W 19 & Over ATR ◆●.
- 76. Trail Horse Walk/Trot E 19 & Over ATR ⊠◆●
- 77. Vintage Trail Horse Walk/Trot W/E Open ◀◆●⊠
- 78. Trail Horse W 13 & Under
- 79. Trail Horse W 14 – 18
- 80. Trail Horse W 19 & Over ATR
- 81. Trail Horse W Open
- 82. Trail Horse E 13 & Under ⊠
- 83. Trail Horse E 14 – 18 ⊠
- 84. Trail Horse E 19 & Over ATR ⊠
- 85. Trail Horse E Open ⊠
- 86. Trail In Hand Open ⊠

LEAD LINE

- 87. Lead Line Showmanship in Hand W/E 9 & Under ◀■
- 88. Lead Line Halter W/E 9 & Under ◀■
- 89. Lead Line Equitation W/E 9 & Under ◀■
- 90. Lead Line Trail W/E 9 & Under ◀■



2016 ETI National High Point Circuit Year End Award Winners

ENGLISH

Kate Aparicio
Ma Che´rie

Champion

Hunt Seat Equitation 13 & Under
Hunt Seat Pleasure
Equitation Over Fences 2'3"-2'6" Open
Jumpers 2'3"-2'6" Open

Michelle Kraut
Prized by Buck

Champion

Country Pleasure English Open
Hunt Seat Equitation Open
Hunt Seat Pleasure Open
Working Hunters, 2'3"-2'6" Open

Division Champion: English Open

Jodi Lakatos
Deer Creek Sharp Arrow

Champion

Country Pleasure English 19 & Over ATR
Hunt Seat Equitation 19 & Over ATR
Hunt Seat Pleasure 19 & Over ATR
Hunt Seat Pleasure 1 & 2nd yr Green Open

Division Champion: English 19 & Over ATR

Chloe Siebels
Vevica Ultime Theo

Champion

Country Pleasure English 13 & Under
Hunt Seat Pleasure 13 and Under

Reserve Champion

Hunt Seat Equitation 13 & Under
Division Champion:
English 13 & Under

WESTERN

Linda deZeeuw
Mac Daddy

Champion

Western Equitation Open

Reserve Champion

Country Pleasure Western Open
Western Pleasure Open

Division Reserve Champion: Western Open

Isabel Negrete
Trace A Co Cowboy

Reserve Champion

Western Equitation 19 & Over ATR
Western Horsemanship Open
Western Pleasure 19 & Over ATR
3rd place

Country Pleasure Western 19 & Over ATR

**Division Reserve Champion: Western 19 & over
ATR**

Denise Nicholson
Blackjack

Champion

Western Equitation 19 & Over ATR
Western Pleasure 19 & Over ATR
4th Place

Country Pleasure Western 19 & Over ATR

Division Champion: Western 19 & over ATR

Matthew Walsh/Owner Susie Jeffrey
Rubble

Champion

Country Pleasure Western Open
Western Horsemanship Open
Western Pleasure Open

Reserve Champion

Western Equitation Open
Division Champion: Mule Open
Division Champion: Western Open



2016 ETI National High Point Circuit Year End Award Winners

RANCH HORSE

Aileen Valentine
Tuckers Nu Cash

Champion

Ranch Horse Reining Open

Reserve Champion

Ranch Horse Trail Open

3rd place

Ranch Horse Pleasure Open

Division Reserve Champion: Ranch Horse

Kerilee Walsh
Dakota Bears Gitter Dun

Champion

Ranch Horse Trail Open

Reserve Champion

Ranch Horse Pleasure Open

3rd place

Ranch Horse Reining Open

Division Reserve Champion: Ranch Horse

Matthew Walsh
Cinders Whiskey Chick

Champion

Ranch Horse Pleasure Open

Reserve Champion

Ranch Horse Reining Open

3rd place

Ranch Horse Trail Open

Division Champion : Ranch Horse

LEADLINE

Rosalee Kraut
Prized by Buck

Champion

Leadline Equitation E/W 9 & Under

WALK/TROT

Ani Eissagholian
White Diamonds

Champion

Country Pleasure Western 19 & Over ATR

Walk/Trot Pleasure Western 19 & Over ATR

Walk/Trot Horsemanship E/W ATR

Reserve Champion

Walk/Trot Equitation Western 19 & Over ATR

Trail Horse Walk/Trot E/W 19 & Over ATR

3rd place

Country Pleasure Western Open

**Division Reserve Champion: Walk/Trot Western
19 & Over ATR**

Chance Leatherman
Koko

Champion

Country Pleasure Western 13 & Under

Walk/Trot Equitation Western 13-18

Walk/Trot Pleasure Western 13-18

Trail Horse Walk/Trot E/W 13-18

Reserve Champion

Walk/Trot Obedience Western ATR

Division Champion: Walk/Trot Western 13-18

Lesley Reisinger-Green
I'm A Dignified Lover

Champion

Showmanship in Hand E/W 19 & Over ATR

Walk/Trot Equitation Western 19 & Over ATR

Walk/Trot Obedience Western ATR

Trail Horse Walk/Trot E/W 19 & Over ATR

Reserve Champion

Country Pleasure Western 19 & Over ATR

Walk/Trot Pleasure Western 19 & Over ATR

4th Place

Country Pleasure Western Open

**Division Champion: Walk/Trot Western 19 & Over
ATR**



ETI National Sanctioned Jr. Ambassadors TRAIL TRIALS



Vasquez Rocks Natural Park
10700 West Escondido Canyon Rd. Agua Dulce, CA

SUNDAY APRIL 2, 2017


BUCKLES
TO
1ST

Make-up Trail Trials!! Awards will be from 2016 October show that was rained out.

Percentage of Proceeds go to the Multiple Sclerosis Society

RIDE
MS
Ride to create
a World FREE
of MS

Divisions

Open, Novice, Junior

#Teams -4 Member or 4 Member MAU Teams

Entry Fees

\$35.00 ETI Members~\$40.00 Non ETI Members

QUEENS
KITCHEN

LUNCH



RIBBONS

1ST - 10th

****Pre-Entries Receive Lunch with Their Entry****

Pre-Entry Deadline Monday March 27, 2017

Team entry fees \$5.00 per member.

Team with lowest combined scores wins total pot.

Entry Booth Opens 8:15 A.M.

First Rider out 9:00 A.M. Last Rider out 11:00

POKER
HANDS \$5.00
+ \$1.00
EXTRA CARD
LOTS OF
RAFFLES

Questions

Contact Michelle Kraut @ ETI Office 818.698.6200 or cell 661.575-7281

Email address- equestriantrails@outlook.com any additional donations may be sent to ETI

All judging will be done on natural trails with judges stationed on the trail to evaluate how horse and rider handle trail conditions. Any saddle and bridle used on the trail are acceptable; anyone riding a stallion must be approved by management. All youth 18 & under must wear an approved helmet.

Mail Entries to: ETI Office P.O. Box 1138, Acton, CA 93510

Rider's Name: _____ ETI Member Y/N _____ Corral # _____

Horse's Name: _____ Email Address: _____

Address: _____ City: _____ Zip: _____

Phone: _____ Emergency Contact: _____

DIVISION: OPEN _____ NOVICE _____ JUNIOR _____

Form of Payment: Cash \$ _____ Check # _____ Amt. \$ _____ Poker: _____ + Extra Card _____

Credit Card Pre-Entries: MasterCard _____ Visa _____ Exp. Date _____ Amount \$ _____

Card # _____ Card Holder Sign _____

PLEASE MAKE CHECKS PAYABLE TO: Equestrian Trails Inc.



**31st
ANNUAL RIDE
June 4 - June 10
2017**

ETI **SPRING** RIDE

Bear Valley Springs, Tehachapi

Ride among oak & pine trees, meadows, wildlife, canyons and spectacular views.



Wagon-wheel rides
4-6 Hours
Meals provided
Corn Hole Tournament

Ride Chairs: Kelli Land (818) 472-2943 Jeanne Gonzalez 661-259-7608
*** Dogs are Discouraged***

PRICE: \$400.00 ETI MEMBERS – \$460.00 NON-MEMBERS
INCLUDES: Camp, Meals for you, showers, horse water, corrals
Separate Check to Bear Valley Springs Assn for \$25.00 cleaning deposit.
*****HAY NOT PROVIDED*****

RESERVATIONS DEADLINE MAY 1, 2017
CANCELLATION NON-REFUNDABLE \$50.00.
AFTER RESERVATION DEADLINE RIDE FEE NON-REFUNDABLE

MAIL APPLICATIONS TO: JEANNE GONZALEZ 23938 RANNEY HOUSE CT, VALENCIA , CA 91355

CHECKS PAYABLE TO: SPRING RIDE

NAME _____

ADDRESS: _____

CITY: _____ STATE: _____ ZIP: _____

PHONE #: _____ EMAIL: _____

NAME ON TAG: _____

PAYMENT BY CHECK: _____ AMOUNT ENCLOSED: _____

EMERGENCY CONTACT _____ PHONE _____

DIET VEGETARIAN _____ DIET REGULAR _____

Please use one form for each person. Make as many copies of this form as you need.
Everyone must sign a Waiver & Release form that will be provided.



Trail Riding

Written by Pat Fish, Corral 36, and Tobe, the mule.



The first trail ride of the new year...a quite thorough exploration of the La Purisima Mission property with the Santa Ynez Valley Riders.

Thirteen riders, covering seven miles in a two-hour ride, with an ascent of 545 feet from the Mission at the low spot where we began to the heights in the barren above. This also marks the very first time I have gotten a SENIOR DISCOUNT. Now I am officially an OMG: Old Mule Girl!!!



We met up at the parking area at the Mission, and everyone quite efficiently got ready. This organization has monthly trail rides, and no one in the group causes drama. Thank heavens for that. All sorts of different horses, 2 mules, and nice people.

We headed out the trail road that winds behind the Mission, avoiding the courtyard and buildings where crowds of school kids and tourists have right of way and we on equines do not.



This is the big flat valley visible in the map, where the residents of the Mission grew their food in the olden days. The present State Historic Park covers 2,000 acres of what was once a 470-square mile land holding, established in 1787 as one of the string of Missions that thread their way up California. (More information <http://lapurisimamission.org>)

At the end of the valley, we struck out across the Burton Mesa chaparral. The dominant tree here is the Coast Live Oak, *Quercus agrifolia*, and it was a great pleasure to see them making a strong comeback after so many years of drought. The scrubby bushes beneath the trees are Chamise, *Adenostoma Fasciculatum*, and they are scratchy

and fragrant. Between the two in size are the Shagbark Manzanita, *Arcostaphylos rudis*, which was pretty much the only plant I saw heavily in bloom. But after the recent heavy rains, I predict this place will be filled with spring bloom this year.

Up and across the Mesa we went, enjoying the scents of the Chamise and Black Sage, *Salvia mellifera*, as the animals pushed through them.

In some areas, the skeletons of oak and manzanita are stark against the skyline, and testify to burns, but underneath the land is making a comeback.



And the little band of riders threads their way up the Mesa. Quite appropriately, the sky was filled with Mare's Tail clouds, Cirrus Uncinus. And the contrails are a reminder that Vandenberg Air Force Base is only a few miles away.

The reason the club chose to ride this place now is because of the sandy soil. Where other forest trails are still muddy and the clay sticks to the hooves, this place is largely sand, and makes for a perfect rainy season excursion.

And you know you are getting back to civilization when the signs start telling you where you may and may not go.

For today, where we went was a fine two-hour stroll through the past, through the chaparral that essentially looks like it always has. A trip back in time, good exercise for mule and human, and a fine start to a year of rides and equine adventures.



Photos by Pat Fish.



**ETI National
2016-2017 Season**



**GYMKHANA
High Point Show**



RUN FOR THE SADDLE SERIES

Contact : Tracy Boldroff or Maddie Patriarca at Eticorral21@yahoo.com

Rider Information

First Name _____ Last Name _____
Horses Name _____
Address _____ State _____ Zip _____
Phone #s () _____ Entry Date _____
E-Mail _____

Division: 1st Year Novice _____ Novice _____ A _____ AA _____ AAA _____ In Training _____

Events

- 1) Speed Barrel _____
- 2) Key Hole _____
- 3) Birangle _____
- 4) Poles 2 _____
- 5) Big T _____
- 6) Cloverleaf _____
- 7) Mystery Event _____
- Jackpot Run _____

**Upcoming Dates: Season Opens – Oct 29 8:00 AM @Oak
Creek Corral - 27345 Sand Canyon Road
Canyon Country, 91387
Nov 19, Dec 10, Jan 28, Feb 25, Mar 25, April 22
State Finals – May 20th Rain Day – April 29
For more information call : 661-607-5178
Or email: tracyboldroff@sbcglobal.net**

Come join the fun!



Entry Fees: No. of Events _____ at \$7.00 each _____
Or \$45.00 for all 7 events Hi Point fee \$50.00 _____ (1XFee)

Method of payment: Cash \$ _____ Check No. _____ \$ _____

2016 Emergency Form is completed and approved for use of Run for the Saddles Series

Circle : Yes or No I understand it is my responsibility to ensure my child under the age of 18 years old is equipped with protective helmet. I assume all responsibility and liability should I elect to allow my minor child not to wear a protective helmet.

Signature _____

**Key to Corral Activities**

Barbecue (BBQ), Camp Outs (CO), Clinics (C), Competitive Trail Rides (CTR), Drives (D), Disaster Aid (DA), Dinner Dance (DD), Drill Teams (DT), Dressage (DR), Endurance Rides (ER), Equine Evacuation (EE), Gymkhana (G), Horse Rescue (HR), Horse Shows (HS), Mounted Assistance Unit (MAU), Parades (P), Play days (PL), Poker Rides (PR), Seminars (S), Trail Rides (TR), Trail Trials (TT), Christmas Caroling (XC)

Bonelli MAU (Mounted Assistance Unit)

www.BonelliMAU.org

President: Paul Maselbas (626) 384-1274

V.P.: Jean Chadsey (909) 967-2065

Whittier Narrows MAU (Mounted Assistance Unit)

President: Karen Thompson (562) 818-7930

V.P.: Linda Osborn (562) 427-1556

Corral 2

Location: Altadena, Pasadena, San Gabriel

Pres/Membership: Betsy Cole (626) 864-4865

V.P.: Julie Unamuno (626) 355-3152

Secretary: Dianne Domingo-Foraste (626) 524-2727

Treasurer: Pricilla Benson (626) 798-5110

Trail Coordinator: Elizabeth Bour (661) 797-0409

General meeting: 3rd Wed monthly, 6:30pm at various locations

KEY: HS, TR

Corral 3 Walnut Creek MAU (Mounted Assistance Unit)

Location: Walnut Creek

Pres/Secretary: Cindi Schaub-Hawkins (909) 354-1613

V.P./Scribe: Heather Skopik (526) 714-7305

Treasurer: Sharon O'Brien (909) 983-8428

General meeting: 1st Thurs monthly at Bonelli Park

KEY: AO, MAU, TR

Corral 6 THE WINDVILLE RIDERS

Location: Corona, Jurupa Valley, Mira Loma, Norco

2017 Board information not available at print.

Corral 8

Location: Rancho Palos Verdes, Rolling Hills Estate

2017 Board information not available at print.

Corral 9 LITTLE ROCK TRAILBLAZERS

Location: Littlerock

President: Anita Martin (661) 965-2210

V.P.: Pamela Sharp (760) 803-8756

Secretary: Michael Cook (661) 341-2750

Membership: Diane Jaegers (661) 947-6153

Treasurer: Catherine Saei (661) 947-9230

Delegate/Newsletter: Ray Drasher (661) 944-4359

General meeting: 1st Tuesday monthly, 6:30pm, Littlerock Grill, Hwy 138

KEY: BBQ, CO, P, PR, TR, XC

Corral 10 THE FOOTHILLERS

Location: Lakeview Terrace

2017 Board information not available at print.

Corral 12 SYLMAR VISTA DEL VALLE

Location: Sylmar

Pres/Membership: Patty Hug (818) 367-2056

V.P.: Bonnie Rodger (818) 437-4921

Sec/Newsletter: Diane Riniker (818) 362-6700

Treasurer: Kelli Land (818) 472-2943

Delegate: Jeanne Catron-Gonzalez (661) 259-7608

General meeting: 2nd Tuesday, 7:30, Sylmar

KEY: PL, TR, Driving Playday

Corral 14 WESTERN WAGONS

Location: Mojave

President/Treasure: Sue Martzolf (760) 662-6102

V.P.: Katie Christman (661) 824-2609

Memb/Secretary: Mary Jo Steele (661) 270-1161

KEY: Lone Pine to Bishop & Death Valley wagon trains.





Equestrian Trails, Inc.

Corral 20

SHADOW HILLS ROUGHRIDERS

Location: Shadow Hills

President: Becky Borquez (818) 262-7764

V.P.: Nikki Ahten (818) 273-4834

Membership: Cheri Ovayan (818) 335-2884

Treasurer: Antoinette Dohmen (818) 352-1651

Trail Coordinator: Deb Mader (818) 653-7628

General meeting: First Monday, monthly, 6:30pm, Shadow Hills

KEY: CO, TR, TT, XC

Corral 21

NEWHALL TRAIL RIDERS

Location: Canyon Country, Castaic

2017 Board information not available at print.

Corral 22

INTERVALLEY TRAIL RIDERS

www.corral22.com

Location: San Fernando Valley

President: Kathleen Smart (626) 590-6972

V.P./Newsletter: Mary Timmer (626) 298-6465

Sec/Scribe: Pamela Patterson (805) 386-4354

Membership: Craig Tognazzini (661) 268-0422

Treasurer: Antoinette Dohmen (818) 352-1651

Trail Coordinator: Tiffanie Bailey (818) 522-9923

Delegate: Paul Jacques (805) 386-4354

General meeting: 3rd Thursday, 6pm - every other month

KEY: CO, PR, TR

Corral 34

LA TUNA CANYON

Location: La Tuna Canyon

2017 Board information not available at print.

Corral 35

OAK CANYON RIDING CLUB

Location: Glendora

President: Dottie Hilliard (626) 335-7112

V.P.: Patti Peralez (626) 388-8100

Treas/Membership: Jane Sigona (909) 593-8500

Secretary: Lisa Fosselman (909) 599-9511

Delegate: Keith Hilliard (626) 335-7112

Trail Coordinator: Marion Bueler

General meeting: 3rd Wednesday, monthly, 7:00pm, Corral 35 Clubhouse

KEY: AC, BBQ, C, CO, CTR, EE, HS, HR, MAU, P, PL, PR, S, TR, TT, XC

2017 Corral Officer Directory

Corral 36

MOUNTAIN RIDGE RIDERS

Location: Calabasas, Malibu, Monte Nido

President: Susan Carr (818) 876-0642

V.P.: Vikki Siemons (818) 400-0909

Secretary: Heather Faucher (443) 996-2053

Membership: Kimberly Gustafson (818) 222-9633

Treasurer: Jeffrey Davidson (818) 716-0991

Trail Coordinator: Jeanne Wallace (818) 222-2560

Newsletter: Stephanie Abronson (818) 222-7669

General meeting with guest speakers: 1st Tuesday, monthly, 7:00pm

KEY: BBQ, C, TR, Holiday Party

Corral 37

CONEJO RIDERS

www.eti37.org

Location: Thousand Oaks

2017 Board information not available at print.

Corral 38

GRIFFITH PARK EQUESTRIANS

www.corral38eti.com

Location: Burbank, Glendale

2017 Board information not available at print.

Corral 43

TRI-VALLEY RIDERS

Location: Hemet, Norco, Nuevo, Riverside

2017 Board information not available at print.

Corral 54

ROCKY HILLS RIDERS

www.eticorral54.com

Location: Chatsworth

President: Dean Wageman (323) 816-1683

V.P.: Bill UpdeGraff (818) 994-2536

Secretary: Marilyn Ruzicka (818) 882-7724

Treas/Membership: Lynn Leonard (818) 709-7433

Scribe: Cindy Strauss (818) 341-2239

Trail Coord/News: Charlotte Brodie (818) 892-3862

General meeting: 1st Thursday, monthly, 7pm, Chatsworth

KEY: AC, BBQ, C, CO, CTR, EE, HS, HR, MAU, P, PL, PR, S, TR, TT, XC

Corral 57

SESPE RIDERS

www.eticorral57.org

Location: Ojai

2017 Board information not available at print.



Equestrian Trails, Inc.

2017 Corral Officer Directory

Corral 65

KERN EQUESTRIAN RIDERS

Location: Bakersfield

President: Alberta Dougherty (661) 808-8595

V.P.: Jeanne Walford (661) 747-2666

Secretary: Mary Jackson (661) 703-2080

Treas/Members: Helen Ordway (661) 201-8152

Scribe: Terry Strickland

General meeting: Wednesday, monthly, 7pm, Rusty's Pizza Parlor

KEY: CTR, PL, TR, TT

Corral 66

ROUTE 66 RIDERS

Location: Barstow, Hinkley

Pres/Scribe/TC: Beth Uzonyi (760) 255-4767

V.P.: Jeanette Hayhurst (760) 953-8520

Secretary: Diane Bubier (760) 447-0093

Membership: Nora Moran & Paula Fairbanks (760) 253-3363

Treasurer: Cindy Franey (760) 590-7330

Nwsletter: Jamie Rees (760) 953-7235

General meeting: 3rd Tuesday, monthly, 6:30pm, Excelsior Charter School, Barstow

KEY: C, CO, P, TR

Corral 70

CROSS ROADS RIDERS

Location: Apple Valley, Lucerne Valley

2017 Board information not available at print.

Corral 77

SAUGUS SADDLE CLUB

Location: Castaic, Saugus, Valencia

2017 Board information not available at print.

Corral 83

TEHACHAPI MOUNTAIN RIDERS

Location: Tehachapi

Co-President/News: Carolyn McIntyre (661) 822-9533

Co-President: Pamela Ronning (661) 821-4005

V.P.: Peggy Bergman-Smith (661) 331-4995

Secretary/Scribe: Doris Lora (661) 822-0648

Membership: Laurie Rude-Betts (661) 821-1904

Treasurer: Sharon DeSilva (661) 822-1462

Trail Coordinator: Caroline Hellyer (661) 821-0361

General meeting: 1st Tuesday, 6pm monthly

KEY: C, PR, TR

Corral 86

VASQUEZ VAQUEROS

Location: Acton, Aqua Dulce, Canyon Country

Co-Pres/Delegate: Karen Dagnan (661) 268-8771

Co-President: Heather Kaufman (661) 360-5151

V.P.: Hannah Haggai (661) 208-0021

Secretary/Newsletter: Troy Stairs (661) 714-9875

Treasurer/Memb: Cindy Alleman (661) 269-4971

General meeting: 2nd Tuesday, monthly, 6:30pm, call President for member's home; potluck

KEY: BBQ, C, CO, DD, DR, P, PL, PR, S, TR

Corral 88

TRI COMMUNITY HORSEMEN

Location: Phelan, Pinon Hills, Wrightwood

2017 Board information not available at print.

Corral 99

TULARE COUNTY JOY RIDERS

Location: Tulare/Kaweah/Three Rivers/Visalia

Pres/Secretary: Joanne Boswell (559) 553-3931

Treasure: Ann Herrmann (559) 592-6987

Scribe/Memb: Karen Tuttle (559) 688-8871

General meeting: 4th Tuesday, monthly, 6:30pm at Kowloon Chinese Restaurant, Visalia

KEY: DR, C, BBQ, PL, S, TR, TT

Corral 103

HESPERIA HAPPY HORSEMEN

Location: Apple Valley, Hesperia

President/Delegate: Lou Griggs (760) 885-6077

V.P./Treasurer: Dawn Walker (760) 961-7879

Sec/Newsletter: Alicia Griggs (760) 217-1214

Membership: Pam Hill (760) 265-0184

General meeting: 2nd Tuesday, monthly, 7:30pm, Pasco's Pizza, Hesperia

KEY: CO, TR, Westward Ho

Corral 118

SIMI VALLEY

www.eti118.org

Location: Simi Valley

President: Dan Mayer (805) 581-3150

V.P.: Terry Simon (805) 522-3346

Secretary: Shelly Freed (805) 501-1700

Membership: Chris Mayer (805) 581-3150

Treasurer: Barbara Black (805) 584-6838

Newsletter: Daniel Kutzbach (805) 864-4264

Scribe: Beth Haney (805) 499-9640

General meeting: Sunday, as needed, 10am, Simi Valley

KEY: HS, Youth Activities





Equestrian Trails, Inc.

Corral 126

SANTA CLARA VALLEY EQUESTRIAN RIDERS

Location: Fillmore, Santa Paula
2017 Board information not available at print.

Corral 138

BARREL SPRINGS RIDERS

Location: Antelope Valley, Palmdale
President/Newsletter/Scribe: Kimberly Dwight (661) 478-2770
V.P.: Marcy Watton (818) 300-7333
Secretary: Bobbie De la Fuente (661) 492-6675
Memb/Treas/Delegate: Diane Garten (616) 256-3230
Trail Coord: Elaine Macdonald (661) 946-1976
General meeting: 2nd Wednesday, 6:30pm, monthly, call President
KEY: BBQ, C, CO, EE, PL, PR, S, TR, Halloween Poker Ride

Corral 210

SUNLAND RIDERS

Location: Sunland/Gibson Ranch
2017 Board information not available at print.

2017 Corral Officer Directory

Corral 357

SADDLEBACK CANYON RIDERS

www.saddlebackcanyonriders.com
Location: Trabuco Canyon, Orange County
President: James Iacono (949) 459-7742
V.P.: Bob Wilks (949) 589-9144
Secretary: Janel Meric (949) 375-8391
Membership: Kristen Holden (949) 444-1990
Treasurer: Vicki Iacono (949) 459-7742
Delegate: Crystal Hansen (949) 207-8921
Trail Coordinator: Heather Latchford (949) 216-9114
News/Scribe: Renate Soderstrom (831) 359-1079
General meeting: 2nd Thursday, monthly, 7pm, Varies
KEY: BBQ, CO, P, PL, PR, TR, Swallows 4th of July Parade, Buckle Playday.



Give the gift that gives all year long...
An ETI Membership!

Contact the ETI Office for more information at (818) 698-6200
or join online at www.etinational.com



California Horsetrader

A Better Breed of Advertising™

In print. Online. Socially networked.

Be sure to read your ETI newsletter each month in *California Horsetrader*, and online at horsetrader.com! (Just click on "Read Digital Edition" at the top of the home page)

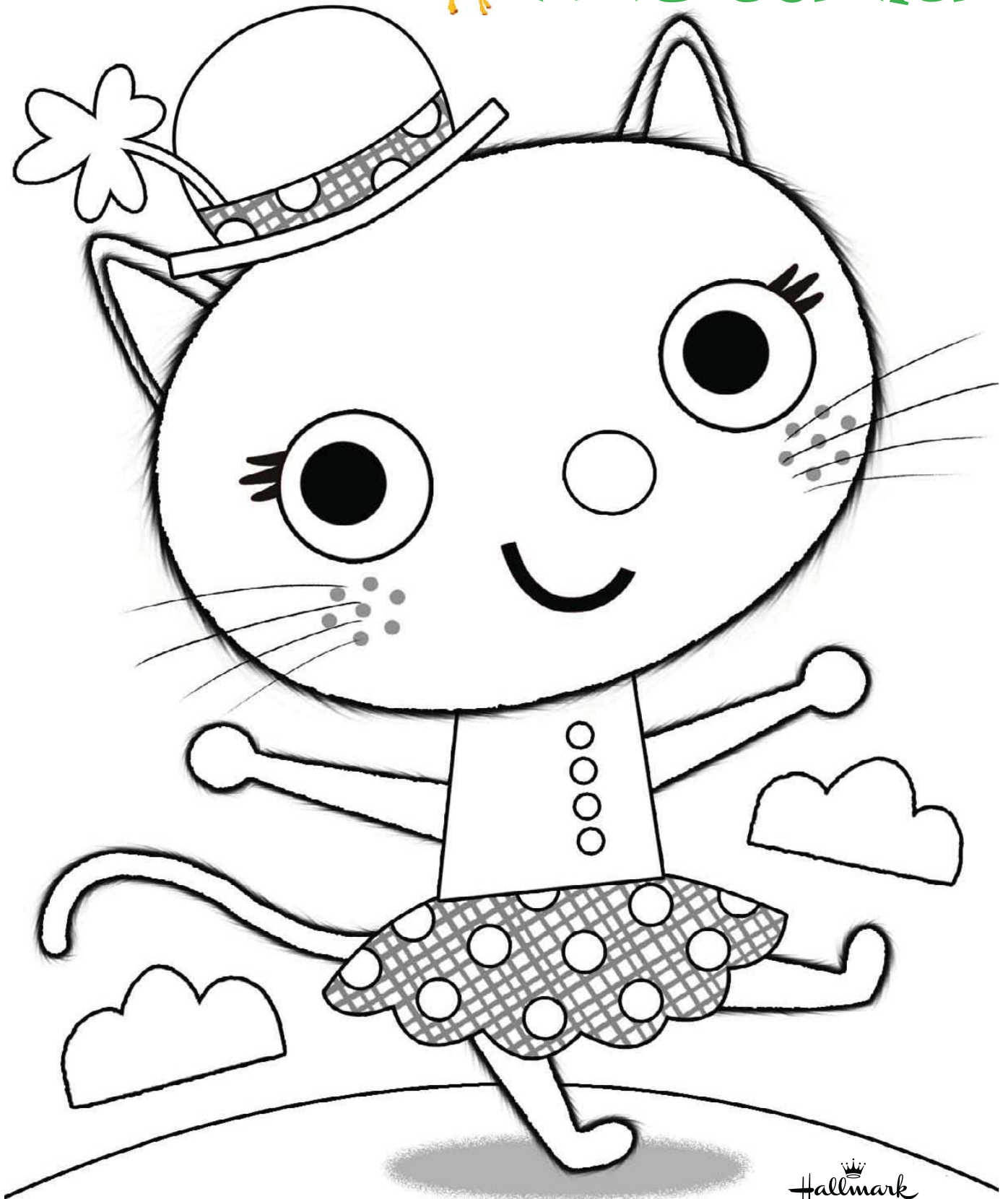
If you have anything equestrian you'd like to sell or market, call us and ask about our "ETI Member discount"!

Proud sponsors of Equestrian Trails, Inc.

760-546-1184



Kids Corner





St. Patrick's Day Word Search



O	E	E	A	R	P	P	S	M	L	C
G	A	E	E	L	A	H	A	E	N	D
R	E	A	U	T	A	G	P	K	T	N
E	P	C	R	M	I	R	O	R	D	A
E	K	I	R	C	E	I	A	A	L	L
N	C	O	H	C	R	A	M	I	A	E
K	C	T	H	R	I	I	I	N	R	R
K	O	A	A	R	H	O	R	B	E	I
P	U	H	S	I	W	I	I	O	M	T
N	C	L	O	V	E	R	S	W	E	N
V	O	D	L	O	G	H	H	T	K	N

- | | | | | |
|------------|--------|----------|---------|---------|
| GOLD | GREEN | SHAMROCK | MARCH | RAINBOW |
| LEPRECHAUN | POT | LUCK | EMERALD | IRELAND |
| PATRICK | CLOVER | IRISH | WISH | MAGIC |



Who We Are ~ Corral 14 Western Wagons Written by Mary Jo Steele, Corral 14



I feel the beauty of the Equestrian Trails Inc. organization is it's diversity in the members' interests while showing unity in our love of horses/mules and the joy of riding and driving. For many of you, this magazine is your only exposure to corrals other than the one you belong to. I'm sure many of you forward through the other corral news to see what your corral has been highlighted for in the current month. Some of the corrals are so strong, and I admire their leadership and especially the person who sits down every month and recalls past events and lists coming adventures.

Since we at Corral 14 Western Wagons have been one of the long standing corrals, I think there may be many ETI members that don't have a clue what we are all about. We are the ones with the covered wagon and team logo, but you ask, "what is that?" Well, pilgrim, let me explain.

We came into being in 1967 with a few members who lived in Ridgecrest, CA. They felt they were getting on in years and couldn't ride as far as they liked to but decided wagons would be just the thing. They built the foundation of Corral 14 history by doing a wagon train from Ridgecrest to Furnace Creek in Death Valley with PONIES! That started the friendship between two groups, Corral 14 and the Death Valley 49er's.

Now you ask, "who the heck is the Death Valley 49er's?" They are a group of folks who work very hard to preserve the beauty and heritage of Death Valley. The two groups have evolved into a long time friendship based on those points of interest. Our Death Valley wagon train every November commemorates not only the founders of our group but the wagon train that was stranded in Death Valley in the 1800's while trying to get to the gold fields and good farm land reported to be in California. If you want to know more about this group of folks who volunteer their time, please check out their web site deathvalley49ers.org. If you would like a booklet telling the complete history of Corral 14, contact Sue Martzolf at sue.a.mart14@gmail.com, Mary Jo Steele at mojo14@qnet.com or the Death Valley 49er's and request a copy of the booklet "Wagons Ho".

Now back to Corral 14 Western Wagons. We in Corral 14 are dedicated to preserving the history of our ancestors that faced the unknown and took on the hardships that to us in a modern world seem almost impossible. We do the Death Valley drive in honor of the wagon parties that were stranded in Death Valley and who were rescued by two men and a white mule who walked from Death Valley to what is now Santa Clarity valley AND BACK to rescue the stranded wagons.

However, our group is much more than just the Death Valley Drive. It has grown into a family who enjoys seeing the world at 3^{1/2} miles an hour, circling the wagons around a campfire at night and sharing the adventures of the day.

We are so spread out it's hard to put a location to our group. We have members in Arizona, Nevada, New Mexico, Montana and, of course, California. Our meetings are when we can get together, usually after one of the local three day drives. In addition to these weekend drives and Death Valley Drive, we sponsor a drive from Lone Pine to Bishop in May.

So now don't you feel better that you didn't go right by the covered wagon logo? While we encourage teamsters and their wagons, we also welcome outriders who want to share this unique experience.

Happy Trails –respectfully submitted by Mary Jo Steele, Secretary, Corral 14 Western Wagons





CORRAL NEWS

Bonelli MAU

Mounted Assistance Unit

Pres: Paul Maselbas

(626) 384-1274

www.BonelliMAU.org



It is chilly out there, however, there is plenty of riding to do between the rain drops. Here are some of our Bonelli MAU riders in Bonelli Park overlooking the lake...this particular trail is called Tree Line Trail. Use caution on the trails as the rain has saturated some of the shallow rooted trees and have caused a large amount of trees to fall this year.



What Makes a Good MAU Volunteer?

We are looking for new members with the following characteristics:

- 1) Demonstrated interest in the equestrian community and supporting the LA County Parks by patrolling as a certified member of one of the four MAU's
- 2) Experienced horsemanship or willingness to obtain necessary experience
- 3) Willingness to serve – commitment
- 4) Ability to serve – time, resources, support
- 6) Reputable – professional, ethical, courteous, cooperative
- 7) Reliable – willing to assume necessary responsibilities
- 8) Leadership and communication skills – able to serve the public, the County, and MAU

Want to learn more? Visit us at one of our monthly meetings. Our meetings are held the first Tuesday of each month at (7pm), Location: Frank G. Bonelli East Shore RV Park Recreation Center at 1440 Camper View Road in San Dimas, Ca 91773.

Jean Chadsey
Bonelli MAU

Whittier Narrows MAU

Mounted Assistance Unit

Pres. Karen Thompson

(562) 818-7930

Corral 2

Pasadena/San Gabriel/Altadena

Pres. Betsy Cole

(626) 403-4573



ETI CORRAL 2

Corral 2 will be holding its spring Schooling Show at Rose Bowl Riders in Pasadena on Sunday, June 4! Gates open at 7:00am and the show will begin promptly at 8:30am. We will have classes for both kids and adults, including rail classes (both Western and Hunt Seat), In-hand, Lead line, and Trail. This is a schooling show with an emphasis on fun and learning in a relaxed atmosphere. Watch this space for a link to the class list, and come and join in the fun! For more information, call Betsy Coles at (626) 864-4865.

Betsy Cole

Corral 3

Walnut Creek

Pres. Cindi Hawkins

(909) 354-1613

Corral 6

Windville Riders

Riverside/Norco/Mira Loma/Corona/Jurupa Valley

Pres. Michael Frederick

(951) 688-3122

Corral 8

Rolling Hills Estates/Rancho Palos Verdes

Pres. Susie Lytal

(310) 488-4389



Corral 9

Littlerock Trail Blazers

Pres. Anita Martin

(661) 965-2210



Corral 10

Lakeview Terrace

Pres. Pam Miller Mitchell

(818) 262-2846



Corral 12

Sylmar Vista Del Valle
Pres. Patty Hug
(818) 367-2056



Corral 34

La Tuna Canyon
Pres. Jeanette Provolt
(818) 951-2360

Corral 14

Western Wagons Mojave
Pres. Sue Martzolf
(760) 662-6102



Corral 35

Oak Canyon Riding Club
Glendora
Pres. Dottie Hilliard
(626) 335-7112

April 21 - 23 (date change) – Denzel Cameron Memorial Drive – Moonraker Ranch Mojave, CA Contact: Katie Christman (661) 824-2609 or Sue Martzolf (760) 662-6102

Corral 36

Mountain Ridge Riders
Agoura/Calabasas/Malibu/Monte Nido
Pres. Susan Carr
(818) 400-0909



May 13-19 – Lone Pine to Bishop Wagon Train Contact: Norm Noftsier (661) 270-1161 or Sue Martzolf (760) 662-6102

Corral 37

Conejo Riders, Thousand Oaks
Pres. Sharyn Henry
(805) 795-6493
www.eticorral37.org



June 9-11 – Jim and Julie Porter Annual Drive – Onyx CA. Contact: Porters – (760) 378-2222 or Sue Martzolf (760) 662-6102

September 29 - October 1 – Fall Drive, Long Ears Ranch, Mojave, CA Contact: Mara Wada (760) 822-8546 or Sue Martzolf (760) 662-6102

Corral 38

Griffith Park Equestrians
Burbank/Glendale
Pres. Diana Hoch
(818) 841-6422
www.corral38eti.com



October 30 - November 3 – Pahrump to Shoshone Drive (tentative) Contact: Sue Martzolf (760) 662-6102

November 6–10– Death Valley Drive Contact - Sue Martzolf (760) 662-6102

Mary Jo Steele
Corral 14 Western Wagons

Corral 20

Shadow Hills Rough Riders
Pres. Becky Borquez
(818) 352-3634



Event Planners promised not to schedule Marathon runs in Oak Canyon, Skyline or Ratlesnake trails.

Corral 21

Newhall Trail Riders
Castaic/Canyon Country
Pres. Kim Sweeney
(818) 419-2918



The plan for the LaKretz Bridge is not dead. There is a move to get all the money needed to build the iconic bridge. The price for the bridge has quadrupled.

Corral 22

Intervalley Trail Riders
Pres. Kathleen Smart
(626) 590-6792
www.Corral22.com



I was at a meeting with Councilman O'Farrell who wishes to put a serviceable pre-fabricated bridge in place to cross the river from Atwater to Griffith Park. The equestrians present agreed that the pre-fab bridge design would be fine and safe for horses. The cost of the alternate bridge would be a fraction of the proposed LaKretz bridge, and would be much quicker to build.

There were requests that the bridge be for equestrians only, as there are several bike only bridges in the works for Glendale and Burbank. It is a long shot, but one worth asking for.

Our hardworking RAP Maintenance staff has been





overwhelmed by the endless rains and muddy tunnels. Maintenance is not just to keep the horse trails nice (an impossible task right now), but they are called all over Griffith Park to deal with downed trees, broken electrical lines, and multiple crisis caused by these floods. They are aware of the trail mess, but will be hard pressed to grade and repair trails until these constant rains let up.

Be patient. Other City Parks have almost no maintenance people, so we are lucky in Griffith Park. It will be fixed in good time. Thank them when you see them.

LYNN

Corral 43

Tri Valley Riders
 Nuevo/Riverside/Norco/Hemet
 Pres. Sonya Haffner
 (951) 928-4566



Corral 54

Rocky Hill Riders, Chatsworth
 Pres.
 (818) 326-5772
www.etiCorral54.com



Corral 57

Sespe Riders, Ojai
 Pres. Rhonda West
 (805) 798-1713
www.etiCorral57.org



Corral 65

Kern Equestrian Riders, Bakersfield
 Pres. Alberta Dougherty
 (661) 808-8595

Corral 66

Route 66 Riders, Barstow/Hinkley
 Pres. Beth Uzonyi
 (760) 255-4767



Corral 70

Cross Road Riders
 Lucerne/Apple Valley
 Sue Purbaugh
 (760) 953-8556

Corral 77

Saugus Saddle Club
 Saugus/Castaic/Valencia
 Pres. Liz Ekeberg
 (661) 297-7669



Corral 83

Tehachapi Mountain Riders
 Tehachapi
 Co-Pres. Carolyn McIntyre
 (661) 822-9533
 Co-Pres. Pam Ronning
 (661) 821-4005



Corral 86

Vasquez Vaqueros
 Aqua Dulce/Canyon Country/Acton
 Co-Pres. Karen Dagnan
 (661) 268-8771
 Co-Pres. Heather Kaufman
 (661) 360-5151



Corral 88

Tri Community Horsemen
 Phelan/Pinon Hills/Wrightwood
 Pres. Susie Figley
 (951) 206-5434



We may not be in a drought anymore, but it's still important to

ALWAYS BE PREPARED FOR FIRES!

THIS SEASON -- When you drive past the Fire Dept Forestry Unit on Las Virgenes Rd. and notice that the warning sign says "**HIGH FIRE DANGER**", take special notice!!

We are at risk! Our children are at risk! Our animals are at risk! Our homes are at risk! Hell's Bells! The mountains are **DRY**. **BE PREPARED!!**

Get out your copy of "What Do I Do With My Horse In Fire, Flood, and/or Earthquake?"



Every inch of this booklet is helpful whether you own a horse or not. If you can't find your copy, then go to the "Forms & Documents" section of our website, www.etinational.com, and download a copy for yourself and maybe even one for your neighbor, too!



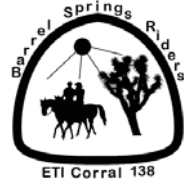
Corral 99

Tulare Country Joy Riders
Tulare/Kaweah/Three Rivers/Visalia
Pres. Joanne Boswell
(559) 561-2218



Corral 138

Barrel Springs Riders
Antelope Valley/Palmdale
Pres. Kimberly Dwight
(661) 478-2770



Corral 103

Hesperia Happy Horsemen
Hesperia/Apple Valley
Pres. Lou Griggs
(760) 885-6077



Many of our Corral members have been riding frequently between the rains. We joined Corral 86 recently and have had several impromptu rides. For Corral sanctioned rides, we seem to be picking rainy days.

With February being such a wet month, we had to cancel our Sweetheart ride due to rain. At this point, we are looking forward to helping the Equestrian Council of Hesperia put on their Membership ride at Hesperia Lakes on March 4. For those who aren't familiar with ECH, they maintain and improve the horse facilities in Hesperia. All of the proceeds from their rides go to improve the horse camps. They put in a lot of hard work and now have opened another horse camp named Mojave River Junction Station Camp. Many of the 103 members helped to establish this new camp.

We're hoping for good weather March 4. Andria and Dawn will lead a ride through Joshua Ranch in Palmdale. Please contact Andria at ADW11451@aol.com.

We are looking forward to a new ride on April 29. The Carol's Memorial Ride at the Smith Ranch in Phelan is in memory of Carol Rosique who unexpectedly passed away this past year. She was a little woman with a big personality. Always willing to help out. The proceeds from this ride will be used to donate a corral at the Mojave River Junction Station in her honor. Details for this ride will be provided later.

Two weeks later, we'll have an obstacle day in Pearblossom at Dual Star Ranch March 19. You can email me at jdwright@aol.com for details and address. This will not be a competition or training...just a practice with their permanent obstacles. There is a \$20 fee to the ranch.



Dawn Walker



Corral 118

Simi Valley
Pres. Dan Mayer
(805) 581-3150
www.eti118.org



Corral 126

Santa Clara Valley Equestrian Riders
Fillmore/Santa Paula
Pres. Danelle Williams
(805) 644-7094





Corral 210
Sunland Riders
Sunland/Gibson Ranch
Pres. Jeanette Provolt
(818) 951-2360



Corral 357
Saddleback Canyon Riders
Trabuco Canyon/Orange County
Pres. James Iacono
(949) 459-7742
www.saddlebackcanyonriders.com



April 9 - I'm leading a ride through Quigley Canyon in Santa Clarita. Please contact me at (661) 478-2770 or jdwright@aol.com.

April 15 - In conjunction with Backcountry Horsemen of Calif. Marcy is leading the Poppy Ride in Lancaster. Contact her at HorsingRound@att.net. They should be beautiful with all the rain we've had.

Kimberly Dwight

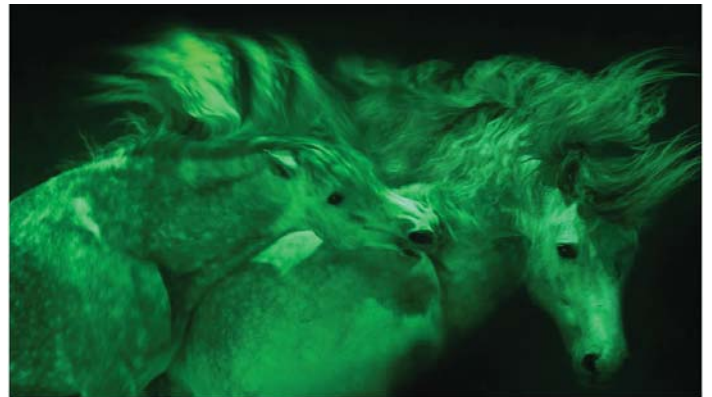


Photo Highlights from Presidents' Luncheon



Tom Kirsch, new ETI President



Kim Estrada & Laurel Surprenant, Co-Chairs for National High Point



Kelli Land, Co-Chair for Spring Ride

Photos thanks to Wendy Kiteko



Photo Highlights from Presidents' Luncheon



Photos
thanks
to Wendy
Kitcko





Non-ETI

Size	Printed	Digital
Full Page	\$200	\$140
1/2 Page	\$110	\$75
1/4 Page	\$75	\$50
Business Card:	\$35	\$25
Classified (three lines)	\$15	\$10

Corrals

Size	Printed	Digital
Full Page	\$100	\$75
1/2 Page	\$60	\$40
1/4 Page	\$40	\$27
Business Card:	N/A	N/A
Classified (three lines)	\$10	\$7

ETI Members

Size	Printed	Digital
Full Page	\$175	\$100
1/2 Page	\$95	\$65
1/4 Page	\$70	\$45
Business Card:	\$25	\$15
Classified (three lines)	\$10	\$7

Special discount rates for Full and 1/2 page with 12 month contract (4 printed issues& 8 digital issues) Payment in full required. Call office.

All insertion rates are costs PER ISSUE and are due at time AD is submitted (unless a contract is signed for the 3X or annual rate).

Ad rates are for camera-ready artwork. Any setup will be charged at \$35 per page, 1/2 tone of pictures are \$10 each. Commercial advertisers, use 85 line-screen. Please submit using paper print or paper print and disk. Email Sarah at email above.

We are publishing ONLINE every month.

Checklist For Membership Application Cards

Be sure to use the standard cards and not paper forms. If you need more cards please let us know.

Please Check Cards For Completeness And Legibility.

Oftentimes the information on the cards is hard to read. Membership fees are due on the member's anniversary date. Please notify members a month in advance of their anniversary date and send them a Membership Application card to complete and return to your Corral. If they renew late, 90 days or more, their anniversary date will change. Anyone who does not have current membership must pay single event fees at events.

Send cards in A.S.A.P. Don't hold them. For Single membership, list only the person applying for membership and no one else.

Basic membership amounts are Family \$50; Senior \$35; Junior \$30. At Large Memberships are Family \$70; Senior \$50; Junior \$45. Some Corrals charge additional amounts. Please contact a Corral or send to ETI, P.O. Box 1138, Acton, CA 93510.

EQUESTRIAN TRAILS (ISSN 00139831) 178160 is published bi-monthly by Equestrian Trails Inc., a non-profit organization dedicated to the Acquisition and Preservation of Trails, Good Horsemanship, and Equine Legislation. Organized in 1944. Office of the publication is located at 2880 Sacramento Ave Acton, CA 93510. Printed by Wright Color Graphics, Sun Valley, CA. Periodical postage paid in Glendale, California and at additional mailing offices. All rights reserved. The editor, staff, and board of directors of EQUESTRIAN TRAILS are not responsible for opinions and statements expressed in signed articles, unsolicited mail or paid advertisements. These opinions are not necessarily the opinions of the editor, staff, and board of directors of this publication. Unsolicited material may or may not be printed depending on space and content. Reproduction of any article in whole or part, or any artwork or graphics, is by permission of this publication or author/artist only. DEADLINE: All material (editorial or advertising) must be received no later than the tenth of the month preceding the date of issue. CHANGE OF ADDRESS: Send old address as well as new one to ETI ~ P.O. Box 1138 Acton, CA 93510. Change must include zip and Corral number. Change must be in the office by the 10th of the month to assure delivery of the next month's issue. The post office will not forward copies unless you provide extra postage. If change is not made with the ETI office, your magazine could be delayed getting to your new address for three to six months. POSTMASTER: send address changes to Equestrian Trails Inc. P.O. Box 1138 Acton, CA 93510.

NOT RECEIVING YOUR MAGAZINE? 1. Please check with the ETI Office to make sure your membership is current. 2. Change of address, see above. 3. If the Office says you are not current, check to see if your Corral has processed your membership and has sent it in. 4. If this is all correct and the Office is printing a label for you, please check with your local Post Office. Since we mail "periodical" (second class), the Post Office can hold this mail from 3-5 days. Since we are newsprint, sometimes we get mixed up with the weekly supermarket sales flyers. It helps to let your Postman or the Post Office know that you are not receiving your mail.

ETI MEMBERSHIP APPLICATION

Name (last): _____ First _____ Corral _____ *

Mailing Address: _____ Spouse: _____

City: _____ State: _____ Zip: _____

Phone: _____ Occupation: _____

Email Address: _____

_____ Junior (under 18) Birthdate _____ Dues Paid _____

_____ Adult (over 18) Dues Paid _____

_____ Family Sr " _____ Jr. # _____ Dues Paid _____

New _____ Renew _____ or Changing from Corral # _____ to Corral # _____

Signature: _____ Date: _____

Parent's signature if Junior only membership-under 18

All ETI rides and events require that participants complete both sides of the ETI Waiver and Release.

Non members must complete a Single Event form and pay \$5.00 for an individual for the day or weekend-camping membership. \$3.00 of this is to be sent with the forms back to the ETI office. A family membership for the event is \$7.00; \$5.00 goes to the ETI office.

The Waivers/Release as well as Single Event forms need to be received at the ETI office within two weeks of event.

* CHECK Please send me information for a Corral in my area. ETI (818) 698-6200

ETI National Programs

Gymkhana High Point Series was initiated in 2010. The program is based on CA Gymkhana Assoc. (CGA) rules. Open to all age riders in all Corrals. Chairperson is Tracy Boldroff (tracyboldroff@sbcglobal.net). Contact her to join the High Point Gymkhana Program or to have your Corral hold a High Point Gymkhana or become the chair.



Horse Shows ETI has a National High Point Circuit. High Point Co-Chairs for 2017 are Kim Estrada (818) 497-4730 rockbacknzip@aol.com Laurel Surprenant (661) 212-7713 equinediva@hughes.net. Non-ETI members can participate in our ETI High Point Shows. But to be a part of the National High Point Circuit you must be an ETI member. You can sign up for the Circuit any time during the season, but must compete a specified number of times in your chosen classes to win awards. Points towards year end awards start accumulating on the date you sign up with the high point program.



The **Junior Ambassador Program** is open to all ETI youth age 7 to 21. Boys are welcome for the Prince and King category. Applications for the program may be obtained by calling Michelle Kraut at the ETI Office (818) 698-6200 or office@etinational.com. The completed forms are due back in the office in May 1st with all fees, sponsors, autobiography and pictures. This is a great way for our youth to represent their Corral and ETI. Participants volunteer their time at several mandatory events as well as many horse shows; trail trials, parades, trail dedications, quarterly dinner meetings and fun events just for the Junior Ambassador Court such as the retreat! Contact Michelle or any of the girls who have participated for more info on the fun activities.



Trail Rider Award Program (TRAP) keeps computerized logs on how many hours members are riding. In this day and age, when trails are giving way to housing developments, it is crucial that records be kept on trail usage. ETI Corrals in all areas are finding themselves having to defend their riding areas more and more against encroaching civilization. On several occasions, TRAP records have been instrumental in maintaining trail access.



ETI TRAP acknowledges hours in the saddle with shoulder patches & pins that can be attached almost anywhere. The fee to join TRAP is only \$12.00 (you must maintain current ETI membership); then the TRAP membership is maintained each year for only \$6.00. You will start by receiving the TRAP main shoulder patch and your log sheets. As you achieve the hour goals additional patches will be sent to you. Carol Elliott is the TRAP chair. Please contact (760) 963-8209 or happy2appy@yahoo.com.

Trail Trials: An ETI Sanctioned Trail Trial consists of a trail ride, usually averaging between two and three hours, with trail obstacles along the way. Obstacles are natural, or simulate naturally occurring conditions for the horse and rider to negotiate. We now have a DVD from a clinic demonstrating obstacles and tips to compete or put on a Trail Trial. It is important to remember that the people doing the judging at sanctioned Trail Trial event are volunteers following the rulebook and are doing thwe best they can. Safety, control, and common sense are the number one priorities for all ETI sanctioned Trail Trials. Trail Trials are open to ETI members and Non-members. There are three divisions: Juniors for youth 14 years (as of Jan. 1st) and under; Novice and Open. Please contact the ETI office at (818) 698-6200 office@etinational.com.

