



Equestrian Trails, Inc.

Official Publication of Equestrian Trails, Inc.
Serving equestrians since 1944

Volume 19, Issue 8

August 2019

Coral 20 Save The Date pg 8



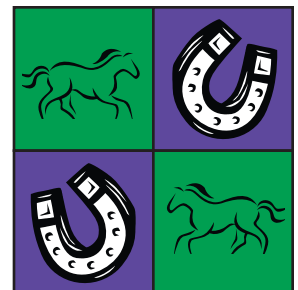
Inside this issue:

Corral 20 - Terry Kaiser Memorial Trail Trial	8
CDFA Alert	9
Death Valley	10
United States Driving for the Disabled	12
Photo Corner	13
Equine Earthquake 18 Preparedness	
Positivity Corner	22
Corral News	23
Kids Corner	30

Upcoming Events

High Point Shows
Gymkhanas
Trail Trials & Rides

See pages 5-8



Ready For More Shaking? pg 18

Dedicated to Equine Legislation, Good Horsemanship, and the Acquisition and Preservation of Trails, Open Space and Public Lands

Photo info on page 3.

ETI Contact Info

EXECUTIVE BOARD

PRESIDENT: **Tom Kirsch**
tkirsch98@gmail.com (310) 871-9458

1st VICE PRESIDENT:
Jeanne Catron-Gonzalez (661) 212-8313

2nd VICE PRESIDENT: **Nikki Ahten**
(818) 489-6527 nmahten@gmail.com

IMMEDIATE PAST PRESIDENT: **Linda Fullerton**
Linda@clearimageprinting.com (818) 612-3305

BOARD OF DIRECTORS

NATIONAL TRAIL COORDINATOR: **Lynn Brown**
akalynnbrown@aol.com (323) 876-6858

AREA TRAIL COORDINATOR: **Elaine Macdonald**
emac43031@gmail.com
(661) 946-1976

AREA DIRECTORS

Area 3 (Corrals: 2, 3, 35) **Dottie Hilliard**
equidot@aol.com (626) 335-7112

Area 4 (Corrals: 66, 70, 103) **VACANT**

Area 5 (Corrals: 14, 65, 83) **Patty Hug**
pattyhug@ca.rr.com (818) 367-2056

Area 6 (Corrals: 22, 36, 54) **VACANT**

Area 7 (Corrals: 10, 12, 20, 38, 101, 210)
Becky Borquez beckyborquez1@gmail.com
(818) 262-7764

Area 8 (Corrals: 37, 57, 118) **VACANT**

Area 9 (Corrals: 43) **VACANT**

Area 11 (Corrals: 9, 86, 88, 138)
Karen Dagnan karenqdagnan74@gmail.com
(661) 268-8771

Area 12 (Corrals: 357) **VACANT**

Area 13 (At-large members) **VACANT**



Equestrian Trails, Inc.

www.etinational.com

P.O. Box 920668
Sylmar, CA 91392
Phone: (818) 698-6200
Phone Hours: 9:00 am—4:00 pm



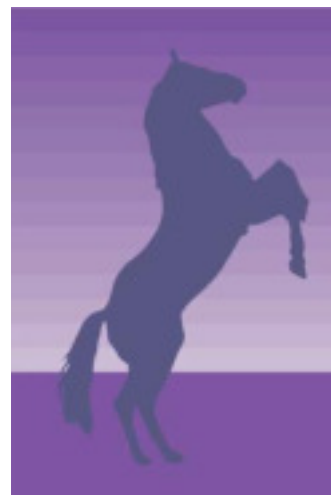
Patty Hug - Membership
Jeanne Catron-Gonzalez - Insurance
Sarah Williams - Magazine, Website
Nikki Ahten - Facebook

Convention: convention@etinational.com
High Point: highpoint@etinational.com
Insurance: insurance@etinational.com
Magazine: magazine@etinational.com
Membership: membership@etinational.com
Office: office@etinational.com
President's Office: president@etinational.com
Website: webmaster@etinational.com



Contents

- 4 Wagon & Harness for Sale
- 5 Coming Events Calendar
- 8 Corral 20 - Save the Date - Terry Kaiser Memorial Trail Trial
- 10 Death Valley Trail Ride Application
- 12 United States Driving for the Disabled
- 13 Photo Corner
- 18 Equine Earthquake Preparedness Section
- 22 Positivity Corner
- 23 Corral News
- 30 Kids Corner
- 33 Announcements
- 34 ETI National Programs





A Message from Tom Kirsch ETI National President

Hello to all.

The weather has sure turned to summer! We have had some nice weather in June and the first of July...hopefully it will cool down a little.



We are working on the ETI Death Valley ride. This ride has a lot paper work involved do to the BLM permits. As you probably know, the area we camp and ride in was hit by two large earthquakes...Lots of damage in Ridgecrest and the Trona area. I have been told that our camps are ok, and we can get to them. I will be making some trips up there to make sure, and Jim Turner (our trail boss) will be riding some of the trails. So come join us October 27- November 1. The application is in this magazine and on our website.

Corral 20 is putting on the 2nd Terry Kaiser ETI National Benefit Trail Trials in October. This was very successful last year, and they worked very hard to make sure everyone had a great time. The information will be in the magazine and on our website. So come out and join the fun.

The ETI National Board July meeting was canceled. All is well with us. We are working hard on next year's programs and getting our insurance in on time.

Take it easy on yourselves and animals in this hot weather!!

Tom



Gina Cruz, Corral 10 President's, daughter Ronnie Cruz on Darla in the ponds in Hansen Dam. Photo by Stef Hester.

National Board Meeting
 August 19 at 7pm
 Foothill Trails District
 Neighborhood Council Office
 9747 Wheatland Ave.
 (Corner of Wheatland & Sunland)

Join us!

ETI SPECIAL EVENTS CHAIRPERSONS

- ETI MOUNTED ASSISTANCE UNIT: Coordinator: Jean Chadsey (909) 967-2065 Jeanieac@aol.com
- 2019 SPRING RIDE (June 9-15): Kelli Land horseqrtrs@yahoo.com Jeanie Gonzalez gilnjean@pacbell.net
- 2019 CONVENTION (June 20-23): Chairperson TBD
- 2019 DEATH VALLEY RIDE (Oct 27-Nov 1): Tom Kirsch (310) 871-9458 tkirsch98@gmail.com
- ETI TRAIL RIDER AWARD PROGRAM (TRAP): Carol Elliott (760) 963-8209 happy2appy@yahoo.com
- ETI TRAIL TRIALS PROGRAM: ETI Office (818) 698-6200 office@etinational.com
- ETI HIGH POINT SHOW PROGRAM: On Hiatus for 2019 - will return 2020



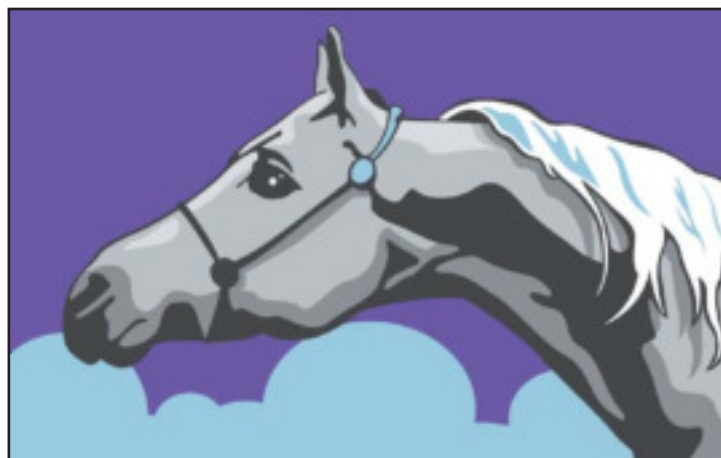
Wagon and Harness for sale

bakersfield.craigslist.org/
atq/d/posey-draft-horse-
harnesses-wagon/
6936451677.html

\$3895



**Mule Days Parade Janet- 559-240-3040
Bishop, CA 2000**



Find the Special Content that comes with a Digital Magazine!

If you're reading this online, look for active links and surprise "easter eggs"!



When you see this, click for a link.



When you see this symbol, click for a surprise!



Equestrian Trails Inc.

Coming Events Calendar

NATIONAL CONTACTS

www.etinational.com

(818) 698-6200

P.O. Box 920668, Sylmar, CA 91392

Email addresses:

convention@etinational.com

highpoint@etinational.com

insurance@etinational.com

magazine@etinational.com

membership@etinational.com

office@etinational.com

president@etinational.com

webmaster@etinational.com

2019 ETI EVENTS

October 27 - November 1

Death Valley ride Contact: Tom Kirsch
(310) 871-9458 tkirsch98@gmail.com

2019 Season High Point Shows

High Point Program is on hiatus for 2019.
Will return in 2020.

Individual Corral Circuit Shows/Series

Corral 37/Thousand Oaks

Red Hat Cowgirl Buckle Series - 5 Shows
-8:15am registration Contact: Sharyn
Henry redhatcowgirl@yahoo.com

Corral 101/Hansen Dam

5 show series - February - October
Contact: Kim Estrada (818) 497-4730
rockbacknz@aol.com

Corral 118/Simi Horse Shows

SVAC Western & English Shows, Thousand
Oaks Contact: Taylor Stephens
(805) 432-6983
taystephens98@gmail.com
www.eti118.org

DRIVING

September 21/ Corral 10

Driving Derby, Lakeview Terrace Contact:
Gina Cruz ginakeilcruz@yahoo.com

GYMKHANAS/PLAYDAYS

Corral 37

April thru November, Thousand Oaks Info:
www.eticorral37.org

Corral 43/Riverside Rancheros

Gymkhana Call Lyn (951) 780-7208

Corral 70/Crossroads Riders

Gymkhana Contact: Rebecca Larkin (760)
669-9647 larkin206@gmail.com

Corral 88

Gymkhana, Triple E Ranch
Contact: Noel Cook (951) 427-9243
ncperformancehorses@gmail.com

Corral 210

Monthly play days third Sunday of
each month, Gibson Ranch, Sunland
Contact: Jeanette Provolt (818) 472-6537
countryatheart.jp@verizon.net

TRAIL TRIALS

October 19/Corral 20

2nd Annual Terry Kaiser Memorial Trail
Trials, Gabrieleno Park/Hansen Dam trails
Contact: Becky Borquez (818) 262-7764

October 27/Corral 54

Trail Trials, Chatsworth Contact:
Tracy Campbell (818) 326-6786
palaloosa7@gmail.com

2019 ETI Trail Rides, Drives, Events

When a Corral plans a
ride at Vasquez Rocks,
as a courtesy, please call
the Rangers
(661) 268-0840



AUGUST

August 3/Corral 88

Trail ride, Triple E Ranch Contact:
Noel Cook (951) 427-9243
ncperformancehorses@gmail.com

August 3/Corral 357

Pancake Fundraiser Contact:
Kristen (949) 444-1990

August 7/Corral 83

Trail Ride, BVS evening ride Contact:
Gaby Roth (818) 307-5708

August 11/Corral 65

Morro Bay day trip Contact: Helen Ordway
(661) 201-8152 heordway@gmail.com

August 11/Corral 118

Horse show, all western, double judge,
Thousand Oaks Contact: Taylor Stephens
(805) 432-6983 taystephens98@gmail.com

August 13/Corral 86

Moonlight ride, Agua Dulce Contact:
Ben Share (661) 992-4899

August 16/ Corral 10

Saddle Club, Lakeview Terrace Contact:
Gina Cruz ginakeilcruz@yahoo.com

August 16-17/Corral 66

Campout, Heartbar Family Equestrian, Big
Bear Contact: Beth Uzonyi (760) 953-2576

August 17/Corral 35

Monthly trail ride, Glendora Contact: Dottie
Hilliard (626) 335-7112 equidot@aol.com

August 17/Corral 37

Gymkhana, Thousand Oaks Info:
www.eticorral37.org

August 17/Corral 88

Gymkhana, Triple E Ranch
Contact: Noel Cook (951) 427-9243
ncperformancehorses@gmail.com

August 17/Corral 138

Inspiration Point ride, Wrightwood
Contact: Kimberly Dwight (661) 478-2770
Jdwight@aol.com

August 18/Corral 86

Trail ride, Wrightwood Contact: Ben Share
(661) 992-4899

August 18/Corral 210

Play day, Gibson Ranch, Sunland
Contact: Jeanette Provolt (818) 472-6537
countryatheart.jp@verizon.net

August 19-26/Corral 22

Morro Bay camp-out/ride, Montana de Oro
State Park Trail boss: Kathleen Smart/
Patty Hug Contact: Kathleen Smart (626)
590-6972 kathleensmart99@gmail.com

August 22/Corral 83

Trail Ride, Stallion Springs Contact:
Carol Hellyer (661) 822-1207

August 23-25/Corral 20

Big Bear Camping Contact:
Janie Niekamp (909) 557-3526

**Equestrian Trails Inc.****Coming Events Calendar****August 24/Corral 357**

Trail ride, Trabuco-Rose Preserve Ride
Contact: Debbie (949) 244-0670

August 25/Corral 66

Tack cleaning party, Bredelis Ranch,
Newberry Springs Contact: Jean Bredelis
(760) 447-0385

**August 25/Corral 118
(rain date from 3/17)**

Horse show, all English, Thousand Oaks
Contact: Taylor Stephens (805) 432-6983
taystephens98@gmail.com

SEPTEMBER**September 1/Corral 37**

Red Hat Cowgirl Horse Show, Thousand
Oaks Info: www.eticorral37.org

September 6/Corral 83

Trail Ride, Wine Ride Contact: Peggy
Smith (661) 331-4995

September 6-8/Corral 22

Horseshoe Meadows camp-out/ride,
Cottonwood Pass Trail boss: Tiffanie Bailey
Contact: Kathleen Smart (626) 590-6972
kathleensmart99@gmail.com

September 7/Corral 65

Ranch ride, Paso Robles Contact:
Helen Ordway (661) 201-8152
heordway@gmail.com

September 7/Corral 88

Schooling Show, Western/English
Pleasure – Equitation, Triple E Ranch
Contact: Noel Cook (951) 427-9243
ncperformancehorses@gmail.com

September 8/Corral 57

Horse Show, Soule Park, Ventura County
Contact: Susan Gruber (805) 890-9340

September 13/Corral 20

Friday the 13th Full Moon ride, Hansen
Dam Contact: Nikki Ahten (818) 489-6527

September 14 /Corral 12

Trail ride, Mt. Pinos Contact: Patty Hug
(818) 367-2056 pattyhug@ca.rr.com

September 14/Corral 37

Gymkhana, Thousand Oaks Info:
www.eticorral37.org

September 15/Corral 43

Gymkhana, Riverside Rancheros Contact:
Lyn Morris lyn4539@earthlink.net

September 15/Corral 101**Rain date: September 29**

Horse show, Hansen Dam Contact:
Kim Estrada (818) 497-4730
rockbacknzip@aol.com

September 15/Corral 138

Welcome ride, Palmdale Hills Contact:
Kimberly Dwight (661) 478-2770
jdwright@aol.com

September 15/Corral 210

Play day, Gibson Ranch, Sunland
Contact: Jeanette Provolt (818) 472-6537
countryatheart.jp@verizon.net

September 20/ Corral 10

Saddle Club, Lakeview Terrace Contact:
Gina Cruz ginakeilcruz@yahoo.com

September 21/Corral 35

Monthly trail ride, Glendora Contact: Dottie
Hilliard (626) 335-7112 equidot@aol.com

September 21/Corral 54

Trail Ride, Brown's/Devil's Canyon
Contact: Tracy Campbell (818) 326-6786
palaloosa7@gmail.com

September 21/Corral 88

Gymkhana, Triple E Ranch
Contact: Noel Cook (951) 427-9243
ncperformancehorses@gmail.com

September 21/Corral 103 & 66

Corrals ETI 103 & 66 Combined Ride,
Mohave River Forks, Hesperia Contact:
Dawn Walker delta3743@verizon.net

September 22/Corral 10

Driving Derby, Spire Park,
Frazier Park Contact: Gina Cruz
ginakeilcruz@yahoo.com

September 22/Corral 22

Santa Rosa Valley ride, Camarillo Trail
boss: Paul Jacques Contact:
Kathleen Smart (626) 590-6972
kathleensmart99@gmail.com

September 26/Corral 83

Trail Ride, Sand Canyon Contact:
Olivia Schwartz (661) 330-8029

September 27-29/Corral 14

Long Ears Ranch Drive, Mojave
Contact: Mara Wada (661) 821-1217

September 28/Corral 86

Moonlight ride, Mt. Emma
Contact: Toni Haigh

OCTOBER**October 5/Corral 83**

Clinic, Wild Hope Ranch, Cummings Valley
Contact: Amber McGee (661) 547-3982

October 5/Corral 88

Barrel Racing, Triple E Ranch
Contact: Noel Cook (951) 427-9243
ncperformancehorses@gmail.com

October 6/Corral 37

Red Hat Cowgirl Horse Show (double
point), Thousand Oaks Info:
www.eticorral37.org

October 6/Corral 43

Gymkhana, Riverside Rancheros Contact:
Lyn Morris lyn4539@earthlink.net

October 6/Corral 57

Horse Show, Soule Park, Ventura County
Contact: Susan Gruber (805) 890-9340

October 10-13/Corral 22

Alabama Hills camp-out/ride, Lone Pine
Trail boss: Allan Johnson Contact:
Kathleen Smart (626) 590-6972
kathleensmart99@gmail.com

October 12/Corral 12

Trail ride, Hansen Dam Contact: Patty Hug
(818) 367-2056 pattyhug@ca.rr.com

October 13/Corral 101

Horse show (Double Judged), LAEC
Contact: Kim Estrada (818) 497-4730
rockbacknzip@aol.com

October 15-17/Corral 83

Camp-out & rides, Alabama Hills Contact:
Doris Lora (661) 822-0648

October 17-20/Corral 86

Camp-out & ride, Pioneertown Contact:
Karen Dagnan (661) 268-8771

October 18/ Corral 10

Saddle Club, Lakeview Terrace Contact:
Gina Cruz ginakeilcruz@yahoo.com



Equestrian Trails Inc.

Coming Events Calendar

October 18-20/Corral 103

Mojave Narrows Camp Out Ride, Mojave Narrows Park, Hesperia Contact: Dawn Walker delta3743@verizon.net

October 19/Corral 20

2nd Annual Terry Kaiser Memorial Trail Trials, Gabrieleno Park/Hansen Dam trails Contact: Becky Borquez (818) 262-7764

October 19/Corral 35

Monthly trail ride, Glendora Contact: Dottie Hilliard (626) 335-7112 equidot@aol.com

October 19/Corral 37

Gymkhana, Thousand Oaks Info: www.eticorral37.org

October 19/Corral 65

Trail ride, Ethel's to Hart Park Contact: Helen Ordway (661) 201-8152 heordway@gmail.com

October 19/Corral 66

Annual charity ride, Barstow Contact: Beth Uzonyi (760) 953-2576 bethygirl55@aol.com

October 19/Corral 88

Gymkhana, Triple E Ranch Contact: Noel Cook (951) 427-9243 ncperformancehorses@gmail.com

October 20/Corral 2

Schooling Show, Rose Bowl Riders Contact: Ann Regan (818) 321-6931

October 20/Corral 12

Make Your Horse Count clinic, Stetson Ranch Contact: Patty Hug (818) 367-2056 pattyhug@ca.rr.com

October 20/Corral 210

Play day, Gibson Ranch, Sunland Contact: Jeanette Provolt (818) 472-6537 countryatheart.jp@verizon.net

October 25/Corral 83

Trail Ride, Wine Ride Contact: Peggy Smith (661) 331-4995

October 25-27/Corral 22

Pioneertown camp-out & ride Trail boss: Tiffanie Bailey Contact: Kathleen Smart (626) 590-6972 kathleensmart99@gmail.com

October 26/Corral 138

Halloween ride, Vasquez Rocks Contact: Leah Frankenberg (661) 623-3197 leah.frankenberg@gmail.com

October 26/Corral 357

Trail ride, Cooks or Blackstar Canyon Contact: Debbie (949) 244-0670

October 27 - November 1

Death Valley ride Contact: Tom Kirsch (310) 871-9458 tkirsch98@gmail.com

October 27/Corral 38

Halloween Playday, Martinez Arena Contact: Diana Hoch (818) 383-6566

October 27/Corral 54

Trail Trials, Chatsworth Contact: Tracy Campbell (818) 326-6786 palaloosa7@gmail.com

October 29-November 9/Corral 14

Death Valley Drive Contact: Sue Martzolf (760) 662-6102

NOVEMBER

November 2/Corral 35

Trail day, Glendora Contact: Dottie Hilliard (626) 335-7112 equidot@aol.com

November 2/Corral 86

Debby Does Acton ride Contact: Debby Arter (661) 816-4345

November 2/Corral 88

Trail ride, Triple E Ranch Contact: Noel Cook (951) 427-9243 ncperformancehorses@gmail.com

November 2/Corral 103

Smoke Tree Ranch Ride, Phelan Contact: Dawn Walker delta3743@verizon.net

November 2/Corral 138

Mescal Creek ride Contact: Elaine Macdonald emac43031@gmail.com

November 3/Corral 43

Gymkhana, Riverside Rancheros Contact: Lyn Morris lyn4539@earthlink.net

November 6/Corral 83

Trail Ride, BVS, Sycamore Canyon Contact: Joan Howard (661) 821-1577

November 10/Corral 37

Red Hat Cowgirl Horse Show (double point - no jumping), Thousand Oaks Info: www.eticorral37.org

November 10/Corral 65

Trail ride, Paso Robles Contact: Helen Ordway (661) 201-8152 heordway@gmail.com

November 15/ Corral 10

Saddle Club, Lakeview Terrace Contact: Gina Cruz ginakeilcruz@yahoo.com

November 16/Corral 35

Monthly trail ride, Glendora Contact: Dottie Hilliard (626) 335-7112 equidot@aol.com

November 16/Corral 88

Gymkhana, Triple E Ranch Contact: Noel Cook (951) 427-9243 ncperformancehorses@gmail.com

November 16/Corral 357

Trail ride, Trabuco-Rose Preserve Ride Contact: Debbie (949) 244-0670

November 17/Corral 86

Pancake Poker Ride, Agua Dulce Contact: Heather Kaufman (661) 360-5151

November 17/Corral 210

Play day, Gibson Ranch, Sunland Contact: Jeanette Provolt (818) 472-6537 countryatheart.jp@verizon.net

November 20/Corral 66

Midweek trail ride, Barstow Contact: Beth Uzonyi (760) 953-2576 bethygirl55@aol.com

November 21/Corral 83

Trail Ride, Burro Schmidt Contact: Gaby Roth (818) 307-5708

November 23/Corral 12

Turkey ride, Sylmar Contact: Patty Hug (818) 367-2056 pattyhug@ca.rr.com

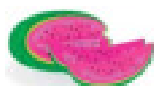
November 23/Corral 20

Becky's Birthday Ride, Wildwood Regional Park, Thousand Oaks Contact: Becky Borquez (818) 262-7764

DECEMBER

December 1/Corral 3

Covina Christmas Parade Contact: Cindi Schaub (909) 354-1613 schaubcindi@aol.com





Equestrian Trails Inc.

Coming Events Calendar

December 2/Corral 88

Trail ride, Triple E Ranch Contact:
Noel Cook (951) 427-9243
ncperformancehorses@gmail.com

December 7//Corral 138

Christmas toy ride Contact: Laura
mybech1@gmail.com

December 8/Corral 65

Holiday day ride/BBQ, Bakersfield
Contact: Helen Ordway (661) 201-8152
heordway@gmail.com

December 10/Corral 66

Corral Christmas Party, Bredelis Ranch,
Newberry Springs Contact: Jean Bredelis
(760) 447-0385

December 12/Corral 83

Trail Ride, California City Contact:
Peggy Smith (661) 331-4995

December 13/ Corral 10

Saddle Club, Lakeview Terrace Contact:
Gina Cruz ginakeilcruz@yahoo.com

December 14/Corral 35 & 3

Glendora Christmas Parade Contact: Dottie
Hilliard (626) 335-7112 equidot@aol.com

December 14/Corral 20

HoHoHo Ride, Stonehurst Park/Sun Valley
Contact: Linda Fullerton (818) 612-3305

December 14/Corral 22

Christmas ride, Griffith Park
Trail boss: Paul Jacques Contact:
Kathleen Smart (626) 590-6972
kathleensmart99@gmail.com

December 15/Corral 38

Christmas Carolling, Burbank Contact:
Diana Hoch (818) 383-6566

December 15/Corral 210

Play day, Gibson Ranch, Sunland
Contact: Jeanette Provolt (818) 472-6537
countryatheart.jp@verizon.net

December 21/Corral 88

Gymkhana, Triple E Ranch
Contact: Noel Cook (951) 427-9243
ncperformancehorses@gmail.com

NON-ETI EVENTS

AVDR Gymkhana

Antelope Valley Desert Riders
Contact: Andria (661) 270-0952
www.avdesertriders.org

**Carousel Ranch
Therapeutic Riding Program**
(661) 268-8010

ELSA

Experience.Learning.Support.w/Animals
Therapeutic riding program
(310) 403-966 www.elsainc.org

Head's Up Therapy on Horseback

Nancy (818) 848-0870
www.headsuptherapy.com

Ride On Therapeutic Horsemanship

program for disabled riders
(818) 700-2971 www.rideon.org

Shadow Hills Riding Club Therapeutic Riding Program

Contact Johnny: (818) 352-2166
www.shadowhillsridingclub.org



SAVE THE DATE!!!

*ETI NATIONAL
Terry Kaiser Memorial
Trail Trial*

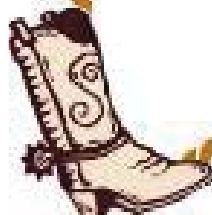
Saturday, Oct 19th

Entry Desk Open 8am

Orcas Park/Hansen Dam



Buckles for 1st Prize
Ribbons 1st – 10th
Schooling Option Avail.





CDFA Alert

Howdy Corral Members

Please read the below and attached information regarding Vesicular Stomatitis that was recently diagnosed in Texas. There are new entry requirements into the State of California for livestock (accept those animals going directly to slaughter).

Karen Lisa Dagnan
Vice President, Corral #86
EMMP Representative

Vesicular Stomatitis has been confirmed in Texas and New Mexico.

Below are the case details and new entry requirements for horses, cattle, sheep, goat and swine entering California from a VS Affected State.

Attached is the current VS Fact Sheet and additional information can be found at https://www.cdfa.ca.gov/ahfss/Animal_Health/VS.html.

Situation Update

On June 21, 2019, the National Veterinary Services Laboratories (NVSL) in Ames, Iowa, confirmed a finding of vesicular stomatitis virus (VSV) infection (Indiana serotype) on a premises in Kinney County, Texas. VSV-Indiana serotype has not been diagnosed in the U.S. since 1998; all VSV cases from 2004-2016 were VSV-New Jersey serotype. Horses on the index premises have met the case definition of infection with compatible clinical signs and virus isolation positive results. This is the 2019 VSV index case for the United States.

On June 24, 2019, the NVSL confirmed VSV infection (Indiana serotype) by polymerase chain reaction (PCR) in a lesioned horse on a second premises located in Tom Green County, Texas. This second affected premises is located nearly 200 miles due north of the index premises.

On June 26, 2019, the National Veterinary Services Laboratories (NVSL) in Ames, Iowa, confirmed a finding of

vesicular stomatitis virus (VSV) infection (Indiana serotype) on a premises in Sandoval County, New Mexico. Two horses on the premises have met the case definition of infection with compatible clinical signs and positive complement fixation test (CFT) titers at a greater than 1:40 dilution, indicating recent infection. Both horses are also polymerase chain reaction (PCR)-positive for VSV (Indiana serotype) on swabs collected from the lesions. This is the 2019 VSV index case for New Mexico.

Vesicular Stomatitis Requirements for Importing Horses, Cattle, Sheep, Goats and Swine into California

All horses, cattle, sheep, goat and swine *originating from any state where vesicular stomatitis (VS) has been diagnosed (except cattle and swine transported directly to slaughter) must be accompanied by a health certificate (certificate of veterinary inspection) and signed by an accredited veterinarian that includes the following statement:

"I have examined all the animals identified on this certificate within 72 hours of shipment date and found them to be free from signs of Vesicular Stomatitis (VS). During the last thirty (30) days, these animals have not been exposed to VS nor located on a VS confirmed or a VS suspected premises."

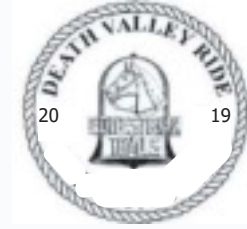
*For purposes of this requirement, "originating" means horses, cattle, sheep, goats, and swine that initially leave the VS infected state and come to California, or those that leave any state, visit an infected state, and then return to California.

The California Horse Racing Board (CHRB) has no additional requirements, at this time, on horses coming from a VS-infected area to enter race tracks and/or CHRB-approved training centers. For more information, contact CHRB at (916) 263-6000.





ETI's 54th Annual Death Valley Trail Ride Application



Chair: Tom Kirsch
Cell: (310) 871-9458
Email: Tkirsch98@gmail.com

Co-Chair: Shonna Miles
Phone: (951) 288-5248
Email: srmilesrasner@yahoo.com

OCT 27 – NOV 1, 2019

Name of Rider: _____

Name on Name Tag: _____

Name on Belt Buckle (if any): _____ Vegetarian?: _____
(Belt Buckles are given at the end of the ride)

Address: _____ E-mail: _____

City: _____ State: _____ Zip: _____

Telephone: () _____ Beverage of Choice: _____

Would you like your email address on the riders list?: _____

Have you been on the Death Valley Ride before? Yes (times): _____ No: _____

ETI Member? Yes: _____ No: _____ Corral Number: _____

Will you be taking a rig to the Town of Ballarat? Yes: _____ No: _____

Rider Fee (one person per application) **\$ 475.00** (if received by Aug. 1)
\$ 495.00 (if received after Aug. 1)

Non-riding guest meal reservations: Ridgecrest: _____ @ \$20.00 each: _____

Town of Ballarat: _____ @ \$20.00 each: _____

Please fill out application in its entirety. Total: _____

MAKE CHECK OR MONEY ORDER PAYABLE TO: ETI DEATH VALLEY RIDE
Mail to: Tom Kirsch, 4367 Sierra Ave, Norco, CA 92860

Due by September 10, 2019 Ride may fill sooner Only 75 participants allowed
*****ETI reserves the right to refuse ANY application at their sole discretion*****

Please check one method of payment: Check: _____ Money Order: _____ Credit Card: _____

If Credit Card, please check which type: Visa: _____ Master Card: _____

Card Number: _____ Expiration Date: _____

Name on Card: _____

Signature of Card Holder: _____ Date: _____

ETI Insurance Waiver must be signed by everyone attending the ride. If under 18, parent or guardian must sign. All riders must read and sign the reverse of this application regarding Policies.



The Death Valley Ride is limited to 75 participants, so do not procrastinate! Get your application in early!

CANCELLATION POLICY:

A refund, less a \$100.00 cancellation fee, will be made if your cancellation is received in writing by October 1st, 2019. NO REFUND WILL BE MADE AFTER THAT DATE – NO EXCEPTIONS

No stallions will be allowed on this ride. Absolutely NO dogs will be allowed, not on trail or in your truck.

GUEST DINNER TICKETS: Indicate on the application if you want extra dinner tickets for the start of the ride and the end of the ride. If you have already sent in the application and then find you need guest dinner tickets, call the chairpersons so that the cook can prepare enough food.

A RAFFLE will be held Sunday, Monday and Thursday evenings. Each crewmember brings one or more items to donate. Riders may donate items if they like – but this is not required to participate.

SHOES on your horse or mule are required on the Death Valley Ride. Pads are recommended. An inspection of all animals will be made and unshod animals will be asked to leave without a refund. No Easy Boots, etc.

INFORMATION will be mailed to you at least one month prior to the ride. Please read all information as information changes from year to year.

I have reviewed and understand the above information.

Date: _____

Please sign (without your signature, your application cannot be accepted.)

Ride fee includes three meals a day for you and feed, alfalfa/water, for your horse, and transportation for your gear. The Death Valley Ride is a progressive/wagon wheel ride, with a different camp each night for the first three nights. Rides each day will vary, averaging between 6 – 7 hours a day. Horses are tied to a tie line. We have a beverage trailer with drinks (water, soda, etc.). Temperatures can range from freezing to record heat. Be prepared for both.

You can arrive Friday afternoon in Ridgecrest at the Desert Empire Fairgrounds. The crew will be there in the afternoon. You must arrive by Saturday morning, before 9:00am to caravan to the Town of Ballarat. Sunday starts the first day of riding.

The following Friday we end our ride at the Town of Ballarat.

Please do not hesitate to call to ask questions. We are here to make this a fun ride for all!

2019 ITINERARY

Friday afternoon – Crew arrives at Ridgecrest

Saturday – Riders caravan their rigs to the Town of Ballarat after dropping off their horses and gear at Ridgecrest

Our Trail Bosses this year will be Blondie Bacal (Gaited) and Mr. Jim Turner (Non-Gaited).

Sunday – Ride will go from Ridgecrest to Trona Pinnacles

Monday – From Trona Pinnacles, through Trona, to Valley Wells.

Tuesday – From Valley Wells, over the Slate Range to the Goler Wash camp.

Wednesday – Will be a wagon wheel ride day with riders returning to the Goler Wash camp.

Thursday – From the Goler Wash camp to the Town of Ballarat.

Friday – Will be a wagon wheel ride day with riders returning to the Town of Ballarat.



United States Driving for the Disabled

Written by Katie Twohy

In 2018, when the ETI Foundation, a 501(c)3 non-profit organization, was closed, the Foundation was required by law to donate any remaining money to another 501(c)3 non-profit organization. The officers of the foundation chose to donate this money to the United States Driving for the Disabled (USDFD) program. USDFD is very grateful for and appreciative of this donation. Here is some information about USDFD, its mission, and its activities.

USDFD seeks to improve the lives of physically challenged individuals by providing the experience of driving horses in a safe and challenging environment throughout the United States and Canada. USDFD provides technical and financial support to persons with disabilities who want to explore the joy of carriage driving. Carriage driving is an equalizing sport, and USDFD works hard to get more and more people into the carriage to enjoy the freedom of driving.

Many beginning and more advanced clinics are offered for free each year to persons with disabilities, including several clinics that are held in California. Some of these clinics are aimed at the rank beginner with no horse experience needed, and in these clinics the emphasis is on "try it and see if you like it." Other clinics are focused on increasing the knowledge and skills of para-equestrians who already have some level of driving experience. Participants in these clinics range from relatively new drivers on up to drivers who have already earned International medals.

In the United States, carriage driving para-equestrians compete against able-bodied carriage drivers in Pleasure Driving events as well as in Combined Driving Events all across the country. Para-carriage drivers have competed in ETI Carriage Driving Pleasure shows and in ETI Driving Derbies, and have done very well.

In Europe, driving events are held exclusively for drivers with disabilities. And at the top of these events are the FEI World Para-Equestrian Driving Championships. USDFD fosters opportunities for drivers to compete in the World Para-Equestrian Driving Championships by training and providing financial support for Team USA. The pictures included show three of our Para-athletes, each of whom has competed in

FEI World Para-Equestrian Driving Championships in the past. The next FEI World Para-Equestrian Driving Championship will be held in 2020 in the Netherlands. If you would like to know more about USDFD, please visit their website, USDFD.org.



Diane Kastama, driving at the FEI World Para-Equestrian Driving Championships.



Ginny Leal driving her horse at a recent developing athlete clinic in California.



Tracy Bowman, schooling for the marathon day of a Combined Driving Event.

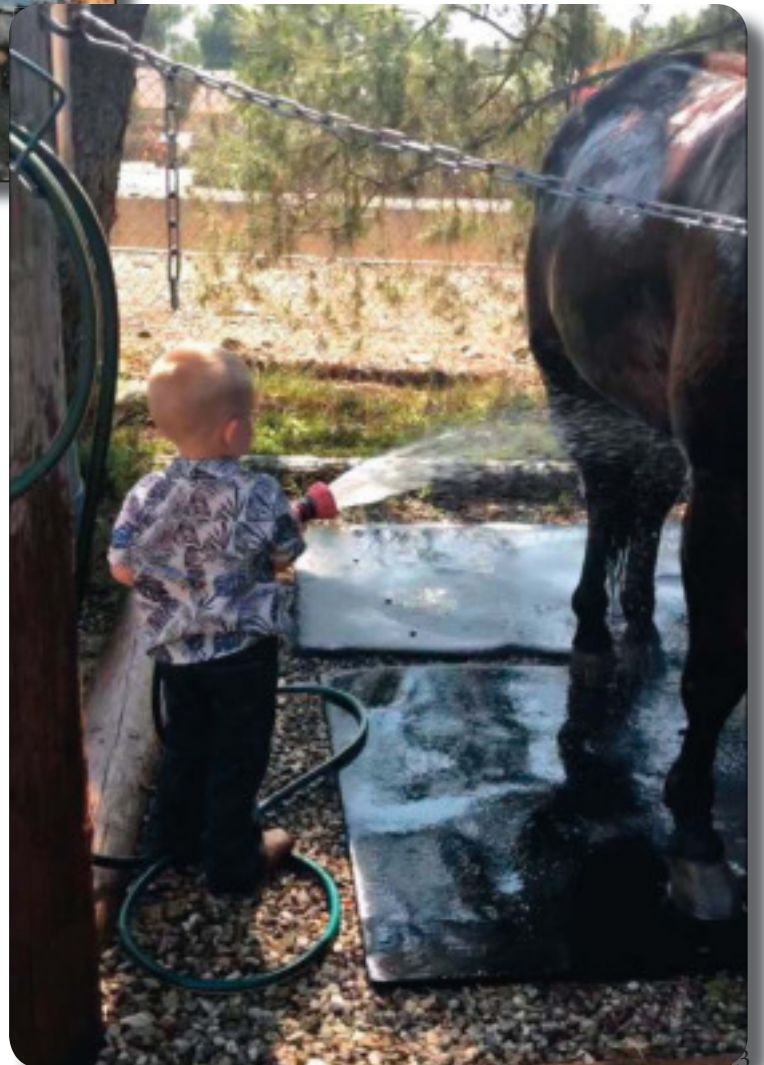


PHOTO
CORNER

Never too early...



to become
an equestrian!



Corral 35 member Janet Covey's grandson, Odin Covey, hosing down Redman. Photo submitted by Dottie Hilliard, Corral 35. Have a photo you'd like to submit? Email photo and pertinent info including photo credit to magazine@etinational.com.



Site includes 12 lots # 437, 522, 523, 524, 525, 526, 527, 528, 529, 530, 531 & 532. 190 foot frontage on Kagel Cyn. Rd. Imagine driving to your secluded & private location surrounded by nature's abundance. Twelve parcel numbers 2526-009-018 thru 2526-009-028 & 2526-009-007 total over one acre. Used by the sellers as a Welsh pony breeding farm for 50 years! Surrounded by the Los Angeles Forest above the hustle & bustle of valley below. Enjoy your gateway to numerous hiking and equestrian nearby trails. It's just minutes from the juncture of 118, 210, 170, 14, 405 and the 5 freeways.

1 1/4 Acres Horse Property - \$185,000

12003 1/2 Kagel Canyon Rd, Kagel Canyon, CA 91342

APN: 2526-009-018 thru 2526-009-028 & 2526-009-007

12 Lots Total 50,533 Sq.Ft. - Unincorporated area of L.A. County

Exit 210 Frwy at Osborne/Foothill. North on Osborne, left Garrick, right Kagel Canyon.

Property on left 1 mile past stop sign. www.mikesells4u.com



MIKE ANDERSON

BrokerInTrust - The Elite All-Broker Real Estate Network

818-899-0993

homestobuy@aol.com

DRE # 01028629

www.BrokerInTrust.com



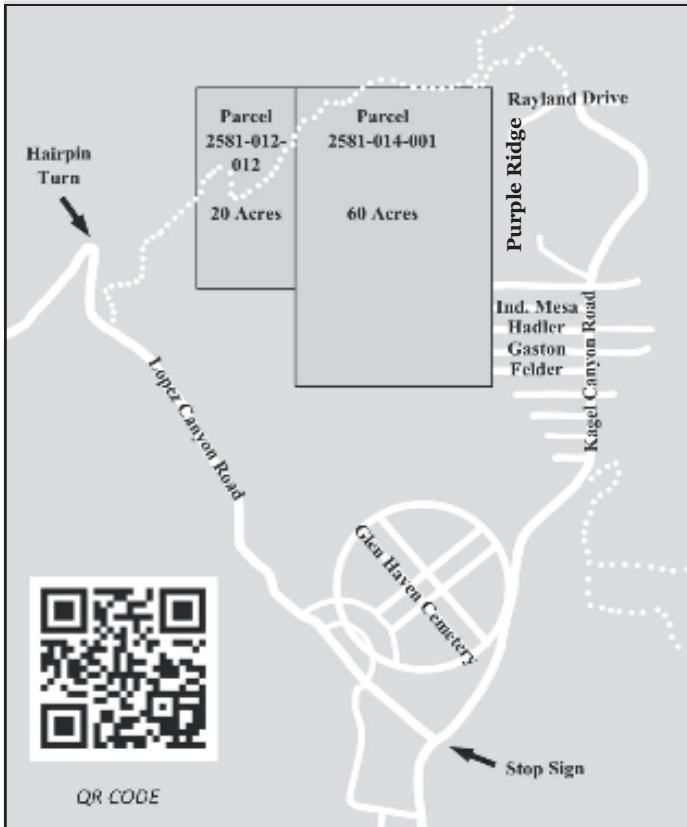
MIKE ANDERSON
BrokerInTrust - The Elite All-Broker Real Estate Network

818-899-0993

homestobuy@aol.com

DRE: 01028629

www.BrokerInTrust.com



For more information on this property, please visit: www.mikesells4u.com or <https://youtu.be/egBH2Tv8W88>

UPPER KAGEL CANYON SYLMAR AREA 91342

Horse Property - 80 Acres For Sale - \$1,250,000

Unincorporated Los Angeles County zoned: LCA21*. Topography: Flat/Rolling/Hilly. Thomas Guide: Page 482/J3. Price includes APN 2581-014-001 = 2,654,940 Sq.Ft. & APN 2581-012-012 = 898,140 Sq.Ft. Exit 210 Frwy Osborne/Foothill. North on Osborne, left on Garrick, right on Kagel Canyon Rd., left on Rayland, right on Purple Ridge. Acreage is to the west of 13770 Purple Ridge, which is the address to put in your navigation. Also accessible from northwest end of Hadler Dr. Minutes from the junctures of the 210, 118, 405, 14, 170 & 5 Freeways. 25 minutes to Santa Monica Universal City Walk. Fabulous city views.

This is not intended as a solicitation if your home is currently listed. All measurements and figures are approximate. Source of information deemed reliable, but not guaranteed or verified by Broker.



Horse Ranch 35710 Tierra Dulce Rd, Agua Dulce 91390

Exit Hwy 14 on Anthony Road, right on Hierba Road, then left on Tierra Dulce. Do not open gate.

- 2,400 Sq.Ft.
- 435,600 Sq.Ft.
- A1 Agriculture Zoning
- APN 3216-006-014
- 3 Bedrooms
- 3 Baths
- Built in 1999
- 3-Car Garage

A & L Ranch first time on the market! A true Equestrian Estate totally private with sensational views of Agua Dulce and the mountains on 10 fully fenced acres adjacent California State Riding and Hiking Trail that goes up to the Pacific Crest Trail. Must see 2,401 Sq.Ft. Single Story ranch home. Custom built for A & L by AA Gonzales owner of Apache Building supplies. Way too much to talk about here, but some things to know: Unique corner fireplace is a solid steel Kiva from New Mexico, High Vaulted Ceilings in Family Room and Master Bedroom, all toilets are Sloan's Flush Mate, large fully tiled showers, jetted tub in master bath and huge walk in closet. Old style cut and stack home. Work flow styled island kitchen designed to feed a lot of people efficiently with all the built ins at your fingertips. The entire estate is designed around the love and safety of horses and livestock with six access gates. Currently set up for 26 horses boarding from \$350 to \$400 with each horse having its own paddock. Room for expansion with A1 Agriculture zoning. Has 32 foot easements all around it, 660 Squared, which are insured with the goal you would never be landlocked. Equestrian amenities included are: 6 stall mare motel each 12x24, 2 large hay barns each capable of holding full truck and trailer loads, 150x285 roping arena, 50 foot round pen 6 feet high, 60 foot round pen 5 foot high, 42 foot bull pen 8ft high, 100 x137 arena for training or turn out area. RV pad with electric hookup. **\$1,190,000**

Mike Anderson

(818) 899-0993

Homestobuy@aol.com



To see more information for this beautiful ranch, go to:

www.mikerealestate.com
www.mikesells4u.com

DRE # 01028629





QR Code

35710 Tierra Dulce Rd, Agua



Horse Paddocks



Hay Barn



Aerial View



Bull Pen

BrokerInTrust Real Estate - Michael Noel Anderson - Realtor® - Mike @ (818) 899-0993

homestobuy@aol.com www.Mikesells4u.com www.mikerealestate.com DRE# 01028629



EQUINE EARTHQUAKE PREPAREDNESS SECTION

Earthquakes and Horses: Tips for Being Prepared

Written by April Lee at www.helpfulhorsehints.com

Living in Southern California all of my life, earthquakes are definitely something I grew up with but I don't think you can ever truly get used to them.



1994 was the year of the Northridge earthquake and also the year I got my first horse. I was too young, then, to consider planning for an earthquake but with the recent 7.1 magnitude quakes here in California, now is as good a time as any to prepare.

How do horses deal with earthquakes? Overall most horses do just fine when an earthquake hits. Some will run or get spooked by the earth's vibrations while others will hardly even seem to notice the earth just shook. What is most important is for you to have an emergency plan in place for emergency events that can follow large quakes.

CAN HORSES PREDICT EARTHQUAKES?

There are some that will say that horses and other animals can predict earthquakes. I personally feel that, as prey animals, they are much more sensitive to earth vibrations and sounds.

When the tectonic plates move, the resulting vibrations can be felt hundreds of miles away in some cases. Horses who seem to "predict" earthquakes may just be sensing these vibrations before we humans recognize them. The USGS has an informative article on the topic that basically says more research needs to be done.

It is always a good idea to be in tune with your horse. If you are riding and they seem distracted or worried, dismount and walk for a bit. You can always get back on. **It's important to trust your gut, you never know what your horse may be trying to tell you.**

5 THINGS YOU CAN DO TO PREPARE YOUR BARN FOR AN EARTHQUAKE

While anywhere in the world could technically experience an earthquake, there are some parts of the United States more prone to them than others. If you live in an area, like California, that is prone to earthquakes, there are definitely some steps you can take to make sure your barn or horse property is prepared.

1. Make an emergency plan and practice it at least once per year. Establish and plan what you will do during the earthquake dependant on where you are. What you might do in the barn would be different than in the house, etc.
2. Know where all your shutoffs are. In the event of an earthquake, cracked gas lines, water lines and downed power lines can all be a major concern. If you ever see down power lines, stay way back and call 911, there isn't anything you can do about that. For water and gas though, knowing where your shutoff valves are and how to turn each off is an essential part of earthquake preparedness.
3. Keep at least 3 days worth of food and water on hand for each animal. We know this is hard for larger livestock. They eat more food and drink more water but it is critical. See our food and water tips below.
4. Have an evacuation plan in place. If something happens and you need to evacuate, do you know where you should go? Will your horses halter? Will they load into a strange trailer? It is better to be over-prepared than to have to leave your horse in an emergency.
5. Keep halters and lead ropes accessible. It is important to keep halters and lead ropes accessible. You should also consider securing a small dog tag to each halter. A



EQUINE EARTHQUAKE PREPAREDNESS SECTION

Earthquakes and Horses: Tips for Being Prepared (cont.)

Written by April Lee at www.helpfulhorsehints.com

small, round plastic pet tag, like these ones on Amazon, will last for years. Keep it simple and use just your barn name and emergency contact information. You don't want to worry about matching horses to halters in an emergency.

6. Make an emergency binder. A great place to store your evacuation plans, emergency contacts, horse identification and feed information and anything else you might need in a disaster is a binder. Have one for the barn and the house just in case. No matter how much planning you do, things get stressful when an event is actually happening and having that binder with the plan will help you get through it.

MAINTAIN ADEQUATE FOOD AND WATER SUPPLIES

One of the many things that were drilled into us after the Northridge earthquake is the importance of having at least 3 days supply of food and drinkable water for each person in the house.

The idea being that after a large event, like an earthquake, roads may be impassible and stores may be closed due to damage. Sometimes, the best option is to shelter in place but, in order to do that, you need to have adequate supplies. What works for pets also applies to farm and livestock owners. Each animal should, ideally, have at least a 3 day supply of feed, medication, and water in case of an emergency.

FEED

Thankfully most barns have a more than adequate hay supply on any given day. Though, this is a reminder to really make an effort to not let your hay room dwindle to completely empty.



If your horse is on any required medication, this too should be on hand in case of an emergency. Your vet may be inundated with emergencies and mail may not be able to deliver refills you ordered. While hopefully, this won't be the case, it's best to always have a reserve supply set aside in case of emergency.

WATER

A single horse needs, on average, 12 – 20 gallons of water each day stored for use in case of emergency.



If an earthquake or natural disaster hit in your area today, would you be prepared with an adequate water supply for all of your horses?

Water is something that not a lot of facilities in the city may be prepared to be without. If you are on city water, what happens if the water supply is interrupted? Bottled water is easy enough to keep on hand for a human but for a horse, water resources become much more important.

If you are on a well, consider having a backup generator in case the electricity goes out. If the well is compromised, how will the horses get access to water?

In the Southern California region, many horses are on automatic watering systems that, while convenient, don't store very much water. While these are great because they ensure a constant supply of freshwater, in an emergency, if that water supply is interrupted, an alternate source will be needed.

Water shutoff's in Southern California occasionally happen for other reasons as well. These are usually short term but are one of the reasons my absolute favorite automatic waterer is a 4-gallon bucket type, still, this wouldn't be enough to last three days.



EQUINE EARTHQUAKE PREPAREDNESS SECTION

Earthquakes and Horses: Tips for Being Prepared (cont.)

Written by April Lee at www.helpfulhorsehints.com

Consider using large, plastic trash cans for storing emergency water for horses. These can usually be sourced inexpensively at the local hardware store. Remember to keep the lid tightly sealed and change the water out a few times a year. Hopefully, you will never need them but it is better to have them and not need them than need them and not have them.

RESOURCES

The AAEP (American Association of Equine Practitioners) has an excellent resource section for disaster preparedness that you should check out for more information.

HorseFund.org disaster preparedness guide for horses.

FINAL THOUGHTS

It is vital to make a plan before disaster strikes. Earthquakes are particularly dangerous because there is often little to no warning that they will strike. When they do, the result can be a loss of power and water for several days. With livestock, preparation is critical to keep your animals in place as well as to be ready for evacuation if the need arises.

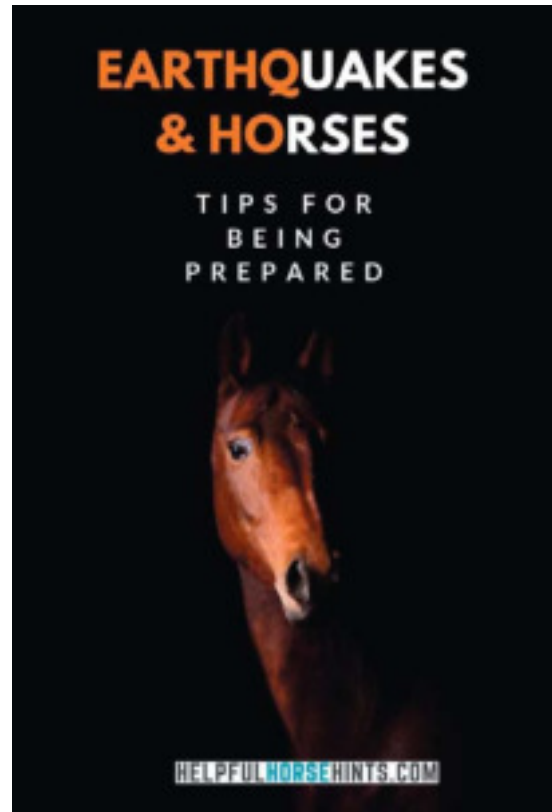
Printed from <https://www.helpfulhorsehints.com/earthquakes-and-horses-tips-for-being-prepared/>

Horse Owners: Prepare For Disaster Printed from EQUUS

Here are 15 tips to help you prepare for disaster and protect your horse when threatened by fire, floods, hurricanes, earthquakes and tornadoes.

It seems that no area in the United States is safe from some type of catastrophic event. Whether it be hurricanes, earthquakes, tornadoes, floods, or winter storms, most areas are subject to at least one, if not all types of disasters. Of course, the peril of fire exists in all areas.

1. Keep debris clear of barns and from under trees. Debris can include manure and bedding that you may have used for mulch. Proper trimming and pruning of trees can make a difference. Do not let branches touch or hang over buildings.
2. Keep fire-fighting equipment and supplies in working order. Make sure fire extinguishers are in each dwelling and outbuilding, and are fully charged.
20 Extinguishers should be checked every 12 months



for proper charge.

3. Inspect all electrical systems every three months for the following:

Service boxes should be kept dry and dust free. They should be mounted at least five feet off the ground on fire-resistant materials; Electrical fixtures should be free of dust, dirt, cobwebs, hay, and other combustible materials; Never use an extension cord as an electrical line on a permanent basis. Additional lines should be installed by a licensed electrician and conform to local and/or state electrical codes.

4. Water mains, pipes and/or contamination of water could occur. Have an emergency supply plan? Enough water for 72 hours: 5 gallons per each horse, 1 gallon per person. Advance notice for hurricane and floods allows you to prepare. Keep large, 60-gallon containers for storage of water. Fill them up with fresh water



EQUINE EARTHQUAKE PREPAREDNESS SECTION

Horse Owners: Prepare For Disaster (cont.) Printed from EQUUS

- during warnings and keep in a secure place. Have water purification tablets on hand.
5. Most disasters can cause all electrical supply to be cut off for days. Consider a generator for refrigeration, cooling, heating and lights. Store fuel for generator away from outbuildings and dwelling. Keep a supply of flashlight batteries.
 6. Keep two first-aid kits stocked, one for humans and one for horses. Ask your veterinarian for suggestions on a first-aid kit.
 7. Have a current list of the horses on the farm. Identify the following:

What paddock and stall they are in; Who are the owners, who are the agents/contact person; Written procedures on what is to be said to the owners/agents in a disaster; List regular veterinarians for horses with potential back-up. Make sure you have phone reminders where you can reach them; Create a script and follow it during a disaster.
 8. During a disaster, it is not unusual for horses to be unwilling to leave their stalls or corrals. If fire or smoke is a danger to them, they must be led out and placed in a secured area. Be able to lead your horses out to a paddock during a fire emergency. Stay as calm as possible. Place them as far away from the fire as possible. Plan out an emergency evacuation and practice it.
 9. Emergencies do occur at night. Do practice an evacuation drill at night with your horses. Use flashlights so your horses will become used to them. Remain calm as horses will react to panic and fear. Practice moving your horse to a safe area, simulating a fire drill.
 10. Keep an inventory of your horse equipment, halters, saddles, bridles, etc. Take pictures and keep them in a secure place other than the barn where they are kept.
 11. Arrange in advance a safe location for your horses to be boarded if your property becomes unsafe after a disaster strikes. Know ahead of time arrangements for your horses to be transported.
 12. If a warning is posted (hurricane, tornado, winter storm), make sure all horses are secured in an outbuilding and are identified with halters, neck straps, or names spray-painted on the horses' left side.
 13. A change in normal feed cycle and material can make your horse sick, particularly in stressful situations. That is why it is important to keep an adequate supply of feed on hand for emergencies. Keep at least 72 hours' worth.
 14. Keep a closet stocked with supplies for your family. Supplies should include flashlights, batteries, toiletries, paper plates, napkins, wipes, plastic utensils, and food supply for one week. Consider mainly canned goods that do not require cooking, Gatorade or bottled juices. Rotate goods every six months, or as needed.
 15. Fire is the largest cause of loss for horse farms. Arrange a fire inspection by your local fire department. Most fire departments would be pleased to come out to your farm before a fire occurs. Suggestions they make will result in a safer farm and may justify a reduction in your insurance premiums.

Information courtesy of American Reliable Insurance Company and American Bankers Insurance Company of Florida.

Printed in EQUUS on July 31, 2002 and March 10, 2017





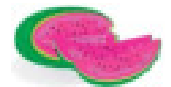
"BE THANKFUL FOR WHAT YOU HAVE; YOU'LL END UP HAVING MORE. IF YOU CONCENTRATE ON WHAT YOU DON'T HAVE, YOU WILL NEVER, EVER HAVE ENOUGH."

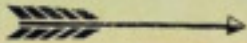
OPRAH WINFREY



We all need encouragement and positive energy...especially these days. Each month, I'm going to send some positivity your way on this page. If you have a favorite saying, please share at magazine@etinational.com and I'll include the following month!!

Your Editor




**IF YOU REALIZED
HOW POWERFUL
YOUR THOUGHTS ARE
YOU'D NEVER THINK
A NEGATIVE THOUGHT
AGAIN**

★
**EVERY
ACCOMPLISHMENT
STARTS WITH
THE DECISION
TO TRY.**





CORRAL NEWS

Bonelli MAU

Mounted Assistance Unit
Pres: Paul Maselbas
(626) 419-6390

Walnut Creek MAU

Mounted Assistance Unit
Pres: Sheri Harder
(310) 502-8375

Whittier Narrows MAU

Mounted Assistance Unit
Pres. Joe Uribes
josephiuribes@yahoo.com

Corral 2

Pasadena/San Gabriel/Altadena
Pres. Ann Regan
(818) 321-6931



Corral 3

Walnut Creek
Pres. Cindi Schaub
(909) 354-1613

Corral 9

Littlerock Trail Blazers
Pres. Anita Martin
(661) 965-2210



Corral 10

Lakeview Terrace
Pres. Gina Cruz
ginakeilcruz@yahoo.com
www.corral10eti.wixsite.com



Corral 12

Sylmar Vista Del Valle
Pres. Patty Hug
(818) 367-2056



August 13 (Tuesday): This will be our Ice Cream Social & Ask the Vet. Always a great opportunity to visit, cool off, and "ask the vet" whatever you want.

August 19-26: Corrals 12 & 22 will be horse camping at Montana de Oro near Morro Bay. Dates may have to be changed if insufficient advance signups are received by EARLY August, so be sure to sign up with payment ASAP! Don't wait 'til the last minute and then be disappointed.

September 10 (Tuesday): Patty Hug's Patio Party & potluck

September 14 (Saturday): Mt. Pinos trail ride (Need Adventure Pass to park there.)

October 8 (Tuesday): Corral 12 meeting

October 12 (Saturday): Corral 12 trail ride Hansen Dam/Gabrieleno

October 20 (Sunday): "Make Your Horse Count" at Stetson Ranch Equestrian Park in Sylmar

October 26 - November 2: ETI Death Valley Ride Corral 12 members always support this event either by crewing or riding.

Circumstances may cause cancellation or reschedule of events, so be sure you RSVP so we can notify you of changes.

Details will be provided in upcoming Corral 12 newsletters, or you can call this scribe at (661) 259-7608 for more info.

Jeanne Catron-Gonzalez

Corral 14

Western Wagons Mojave
Pres. Sue Martzolf
(760) 662-6102

Corral 20

Shadow Hills Rough Riders
Pres. Cheri Ovayan
(818) 335-2884



Corral 22

Intervalley Trail Riders
Pres. Kathleen Smart
(626) 590-6792
www.Corral22.com



Fifteen riders from Corral 22 and friends set off through Little Tujunga Canyon in Lake View Terrace on a balmy moonlit ride. After a 2 1/2 hour ride, with several stream crossings and a couple stops along the way, we arrived at The Hideaway Bar & Grill to enjoy some refreshments and had pizza and wings brought in for the hungry group. Afterward, we made our way back to Ranger Park where several people camped for the night and enjoyed a





yummy breakfast the next day.



August 19-26: Morro Bay, Montana de Oro State Park

September 6-8: Horseshoe Meadows / Cottonwood Pass

September 22: Santa Rosa Valley, Camarillo



For additional information, please visit us on our website: <http://corral22.com> or on Facebook: ETI Corral 22.

Corey Hallmark

Corral 35

Oak Canyon Riding Club
Glendora
Pres. Dottie Hilliard
(626) 335-7112



Once again, Corral 35 has spent the summer under construction. Although we are truly grateful for the many projects that the City of Glendora has deemed necessary and appropriate for the Carlyle Linder Equestrian Park, it is also very frustrating in event planning for our Corral. I am now very careful when I suggest something that I would like to have help with at the Park, because before I know it...SHAZAM...here comes the City crew. How lucky are we to have that kind of support nowadays? Our Stetsons

are off to the Parks Department, City Works, Community Services and to all of our loyal friends at City Hall who love seeing our horses in the Community.

Except for the scary yellow tape, the horses are now becoming accustomed to orange cones, cement mixers, trenchers, and assorted other pieces of equipment both small and large, but mostly loud. To name a few of these improvements: we now have all the latest ADA amenities. We have new people drinking fountains with pet watering bowls, new picnic tables, trash cans, and barbeques; new sodded lawn with sprinklers, new trees and lovely landscaping complete with a make believe stream bed to carry away the runoff from the large arena on a rainy day. As we speak, a new stone retaining wall and steps leading from the small parking area up to the building are under construction. And lest I forget, our clubhouse has been painted and has new lighting inside and out. Keep an eye out for new signage at the entry and a new sign with Rules for Equestrians.

I am sure there are more things that I have not listed, but you now understand why it has been hard to schedule events at the Park. However, Corral members have been enjoying the monthly Trail Rides and informal get-togethers. We are now in the planning stages of hosting an ETI Horse Show in the Fall along with the ETI Jr. Ambassadors at our Arena. Watch for more details. Volunteers are always welcome at all of our events. If you are near a hose at the Equestrian Park, refresh the watering trough or water a plant or two. It's hot out there.

“What Do I Do with My Horse, Cat, Dog, Child, Gerbil in Fire, Flood, and/or Earthquake?”

Are your animals MICROCHIPPED? FIRE SEASON never disappears here in Southern California! MICROCHIPS - A 'must have item' if you must evacuate your property, and you want to get your animal(s) safely back home again. So easy to get through your veterinarian.

Hopefully you still have your copy of this booklet! If you cannot find your copy, you may download this booklet FREE at www.etinational.com, look for Forms & Documents. For information, contact Stephanie Abronson (818) 222 PONY; Stephanie@abronson.com.

ALWAYS BE PREPARED FOR FIRES!

THIS SEASON -- When you drive past the Fire Dept. Forestry Unit on Las Virgenes Rd. and notice that the warning sign says "HIGH FIRE DANGER", take special notice!! We are at risk! Our children are at risk! Our animals are at risk! Our homes are at risk! BE PREPARED!! Get out your copy of: "What Do I Do with My Horse, Cat, Dog, Child, Gerbil in Fire, Flood, and/or Earthquake?"



Every inch of this booklet is helpful whether you own a horse or not.



On our June trail ride, Corral 35 water trough. Sally on Blaze, Dottie on Sera, Gege on Marnie, Lisa on Belle with pony in hand Cody, Janet on Redman, and photographer Marion on Royal.

See you at the watering trough!
Dottie Hilliard



Corral 36

Mountain Ridge Riders
Agoura/Calabasas/Malibu/Monte Nido
Pres. Susan Carr
(310) 403-9665
www.eticorral36.com



nine riders and two in the cart pulled by Danny and Harley, which also sported our club banner. The weather was actually not too bad this year. Thank you to Jamie Rees for driving us back after shuttling our rigs, and to everyone that took pictures! For our efforts, we won a first place ribbon. Also, it was a nice surprise that Star Ott stopped by to see everyone right before her retirement and move to Las Vegas.

Corral 37

Conejo Riders
Thousand Oaks
Pres. Sharyn Henry
(805) 795-6493
www.eticorral37.org



There was no club meeting in July, but we have a club camp out and trail ride at the Wild Horse Family Equestrian Campground near Big Bear on August 16 & 17. Several of us are going up August 12 and staying all week. We had to make reservations in February to get our camp sites. If anyone is coming up for the day, please let me know. An email will be sent out to all club members as our August general meeting won't be until after this ride.

Corral 38

Griffith Park Equestrians
Burbank/Glendale
Pres. Diana Hoch
(818) 841-6422
www.corral38eti.com



September 21, we are combining our trial ride with ETI Corral 103 at Mojave River Forks campground in Summit Valley. This should be a fun one! Both clubs plan on raffling off some goodie baskets.

Corral 43

Tri Valley Riders
Nuevo/Riverside/Norco/Hemet
Pres. Mitch Murvine
(951) 956-4012



Here's to cooler weather!
Beth Uzonyi/President
bethygirl55@aol.com

Corral 54

Rocky Hill Riders
Chatsworth
Pres. Tracy Campbell
(818) 326-6786

Corral 57

Sespe Riders
Ojai
Pres. Bryan Kearney
(805) 946-9232
www.eticorral57.org



Corral 70

Cross Road Riders
Lucerne/Apple Valley
Pres. Rebecca Larkin
(760) 669-9647

Corral 83

Tehachapi Mountain Riders
Tehachapi
Co-Pres. Carolyn McIntyre
(661) 822-9533
Co-Pres. Judy Walsh
(661) 821-1615



Well, Summer is upon us. The grasses are drying out, new fires happening daily. Some make the news others fortunately are extinguished before they become newsworthy. I am thankful for that.

Corral 65

Kern Equestrian Riders
Bakersfield
Pres. Helen Ordway
(661) 201-8152

Corral 66

Route 66 Riders
Barstow/Newberry Springs
Pres. Beth Uzonyi
(760) 255-4767



Earthquakes and/or fires seem to fill the news feed. Of the two, I think fires are the greater concern for the people and horse keepers who live near the wild lands. We have long passed the local deadline for clearing property boundary, of biological material, and providing a defensible space. I'm still working on it around my pasture that sits along a well-traveled road famous for discarded refuse and people pulling over to talk on the phone, inadvertently igniting a fire when the super-heated, underside of the vehicle touches the very dry tinderbox grasses. I work a little at a time. In my

Eleven of us braved the heat to ride in the 4th of July parade in Newberry Springs. There were



advanced years, I don't tolerate heat well, and sun on my skin requires a layer of clothing as sun protection before I begin. Bottomline it's a sizable amount of work. I suppose I could hire some help.

As I work on my own hoe down, I wonder about the trails we didn't get around to clearing earlier in the year. When trails are cleared too early, they just grow right back. When they are cleared too late, it's a more difficult arduous task. Mustard weed with trunks the circumference size of your arm. A recent survey of the Stallion Springs trails needing to be cleared revealed some trails had been completely washed out during the very wet winter. Gone via erosion, no longer a viable option for passage. Severely undercut banks of once torrent streams are of great concern.

I think it is important to keep the trails cleared and visible to the horses and riders for enhanced safety on the trail. It helps the riders to avoid trespassing on private land while enjoying the dedicated trails that are present on easements intended for that purpose. We have man-made and natural hazards that are present, to be avoided. So, the well-maintained trail is important.

Typically, a wet year provides more grasses and grains that feed the rodent population which tends to explode during a wet year. The ground squirrels, gopher and other burrowing rodents create a series of subterranean tunnels, undermining the trail surface to the extent that significant collapse occurs. Trails become so deeply undermined that the horses or hikers plunge ankle or knee deep into the soil. Sometimes the roots of the weeds we seek to remove are the only thing left holding the soil in place. But their presence obscures the danger below.

Another significant natural hazard present is the rattle snake. One local community, in the Greater Tehachapi area, has a group of people who will respond to your request to remove a snake, any snake, from you home, your garage, your patio or yard. They call themselves The Snake Guys (follow them on Facebook). You just call them, and they will respond. Currently, as of this writing they are up to 93...the number of rattle snakes relocated this season. By the time this article appears they will have collected and relocated, more than 100. Their mission is to preserve the ecosystem. Their posts are very educational. I use the videos they post to train my ears to the sounds the snake makes. Last week a horse and rider had a rattle snake encounter on the trail that resulted in the rider being hospitalized and unfortunately the horse was euthanized. Heartbreaking to say the least.

Man-made hazards such as rusty old T posts or down barbed wire concealed in the grass and chaparral are good things to avoid. A clean trail helps to keep horses and riders safe from incidents that involve these things that can result in injury and unwanted vet expenses.

Corral 83 is contributing funds to help clear some of our favorite trails in the Stallion Springs Area. Chanac Creek trail to Deer Canyon trail, to the Pipeline trail, to the Golf Course/Shoreline trail makes a very nice loop ride. A crew will come in and attempt to reduce the tall grass and mustard weed that covers the trail. Some members were out this week trying to find and flag the trail so that the hired crew who are not familiar with the area will know where to do the trail clearing.

Earlier in the season, Carol Hellyer and her daughter, Beth, worked on the Mustang Wilderness trail. Later Carol returned with her husband Bob and worked so more on the adjacent trail. After the Beautiful Buckeye Ride, Carol, myself and Kathy Burns scouted the Susan Wellington trail (super overgrown with every grass and weed present), The Elk trail, so badly overgrown we lost our way and exited the area via a nearby paved road. The Elk trail doesn't see a lot of activity as it is a technically challenging trail. But when riders make it to the top they are treated to spectacular views of the local geography and the presence of amazing wildlife. As Carol, Kathy and I made our way out of the Elk trail we heard a Bull Elk bugling then saw the elk family including a few new calves leave the nearby hillside toward the sound of the bull elk. Always reminding me of why I enjoy trail riding so much and why it is so important to continue to keep the trails open and useable.

Happy Trails,
Doris Lora
C83 Secretary/Scribe

Corral 86

Vasquez Vaqueros
Agua Dulce/Canyon Country/Acton
Pres. Ben Share
(661) 992-4899



Corral 88

Tri Community Horsemen
Phelan/Pinon Hills/Wrightwood
Pres. Noel Cook
(951) 427-9243



Corral 101

Route 101 Horse Show Circuit
Lake View Terrace
Pres. Dawn Surprenant
(661) 433-9069
www.route101horshow.com





Corral 103

Hesperia Happy Horsemen
Hesperia/Apple Valley
Pres. Dawn Walker
(760) 961-7879



Corral 103 had a moonlight ride in July. I guess everyone was pretty busy that night. Ray Sims led the ride. We only had two other riders from Corral 88 that showed up. It was a great night for a ride. Just breezy enough to keep it comfortable. Many thanks to Ray for all his help on rides. He always tries to go a different route than before so you are not riding the same areas all the time.

We have a new meeting place. The Rusty Bull Roadhouse in Apple Valley. We had our first meeting there, and everyone said they approved...Great food and service.

Johnnie Miller decided to not hold his ride for August 4. Mary Teran offered to do a Pool Party/ Pot Luck for 103 members and their guests at her house on the same date. 103 members who have participated in the past know what fun these are.

We are looking forward to the combined ride with Corral 66 on September 21 at Mojave River Forks. Planning on having a raffle. I hope to see you there.

Dawn Walker

Corral 118

Simi Valley
Pres. Dan Mayer
(805) 581-3150
www.eti118.org



August = TWO Horse Shows!

Yes, ladies and gentlemen, we're having (2) horse shows this month! One of each!

SVAC 2019 Horse Show Schedule

August 11: Western & Specialty - Double-Judge Show

This is the second and final Western & Specialty show in our circuit. Remember, with (2) Judges, the class fees are doubled and (2) sets of placings are awarded to each class. So, it's like TWO shows in ONE. It's a must for those pursuing SVAC Year-End honors.

Rail and trail, ranch horse, halter, Mustang and gaited, minis and ponies, plus walk-jog! Traditional Western or Specialty Breed and Gaited, come show your stuff with us!

Dollar Show

This is the second and final Hunter/Jumper & English show in our circuit. You don't have to jump through hoops to have a great time, just jump around the course! All class fees are at the single rate. First place winners receive real Silver Dollars! Again, this show is a must for those pursuing SVAC Year-End honors.

Over fences and on the rail! Hunters and jumpers, English equitation and pleasure, walk-trot and cross-rail, halter and hack! Plus Thoroughbreds, ponies, and all breeds, oh my!

We so appreciate the quality and caliber of the horses and exhibitors that come to our shows. It makes all the hard work worth it.

And whatever tack you use, we're looking forward to seeing all of you back in the ring this month to wrap up our 2019 season.

Website www.eti118.org

Check for Premiums, Entry Forms, Waivers, and Rules, all available for download. News and updates will be posted, so check back often.

Welcome to all new Members and Sponsors! You are why and how we do what we do! We love horses and the equestrian lifestyle, and we know you do too. Together, we can keep our equestrian interests and sports alive in the community and beyond.

When you put your horse first, he will last.
Good riding 'til next time.
~ Beth Haney

Corral 138

Barrel Springs Riders
Antelope Valley/Palmdale
Pres. Kimberly Dwight
(661) 478-2770



You can call it fun with grandkids, or introducing the next generation to horses.

Kira is six years old and has been taking riding lessons half her life! She may not have the strength to bend a horse's head around, but she knows how and when to try. She spent a month with me, and I let Licorice wear the muzzle because the weeds are at a perfect height for him to grab, and I didn't want to discourage her from riding if he pulled too much.



One day she asked me NOT to pony her...it was embarrassing to her! We went to Vasquez Rocks, Inspiration Point in Wrightwood, Hansen Dam, Littlerock waterfall, Bear Valley Springs, an obstacle clinic in Acton and around our house frequently. The last day I let her ride Buckwheat, my Oakie from the wild Tehachapi herd. Kira spent 27 hours in the saddle in her month in CA. We made two trips to see the (not so) wild horses in Tehachapi.



Kimberly Dwight
ETI Corral 138 Barrel Springs Riders

Corral 210
Sunland Riders
Sunland/Gibson Ranch
Pres. Jeanette Provolt
(818) 472-6537



Corral 357
Saddleback Canyon Riders
Trabuco Canyon/Orange County
Pres. Kristen Holden
(949) 444-1990
www.saddlebackcanyonriders.com



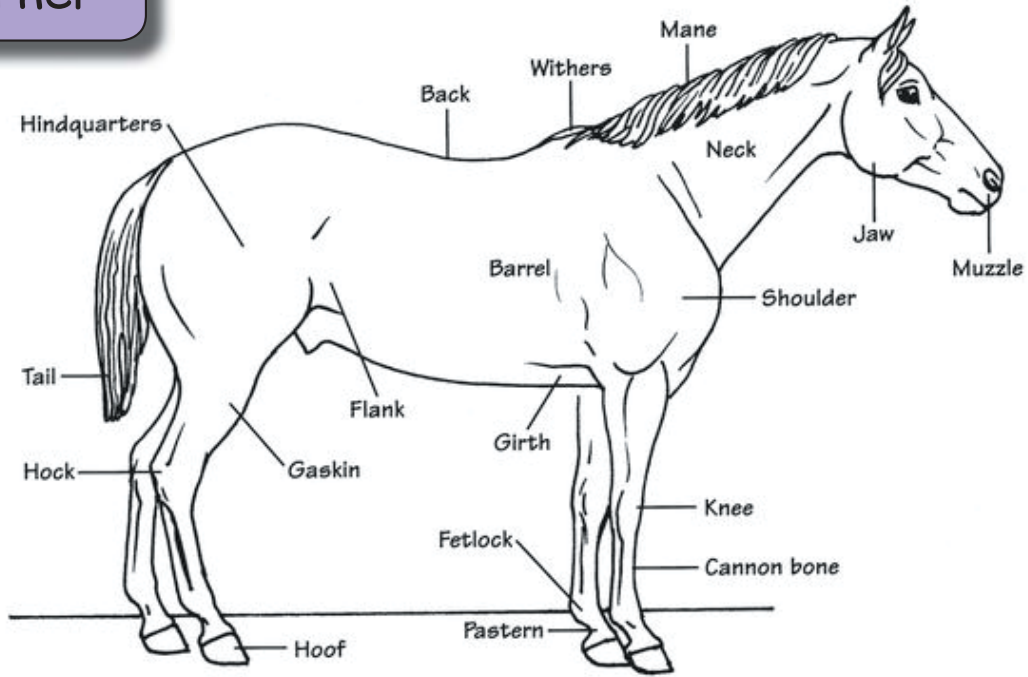


Kids Corner





Kids Corner



Parts of the Horse Word Search

J D H I N D Q U A R T E R S D F A L N P
 A B O Z Z E G J B M A C X H P K N E E A
 W U C M P S N R F O O H T O F I P R V S
 X M K G A H T P J C E K Q U D E Y B L T
 A S I Z W M A N E T A I L L I O N A D E
 G M F Z P I O G H Y M J N D X P T R I R
 A Q E V C A N N O N B O N E C L E R S N
 S R T H M S B K P W S I T R L A T E L W
 K P L A C M R U E B A C K I N S A L G I
 I P O K L F U P G R N K R V H N J P W T
 N B C D E K C Z F A R L P G O E G J F H
 D A K Z U L E T Z D H M I J P C J E A E
 J S U D A Q V O P L N C A B D K V N Q R
 F L A N K A B S T R E N L G I R T H Y S



(C) Breyer



**Give the gift that gives all year long...
An ETI Membership!**



**Contact the ETI Office for more
information at (818) 698-6200 or
Join online at
www.etinational.com**

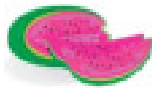
Display Your Equestrian Pride!

Contact the ETI office for Stickers
at (818) 698-6200 or
office@etinational.com



ETI Bell logo
Small 3" x 4" for inside
vehicle window \$3.00

8" X 10" for gate or
trailer \$6.00



got trails?

Got Trails?
Stickers \$5.00
Available in White
or Black



United We Ride \$3.00

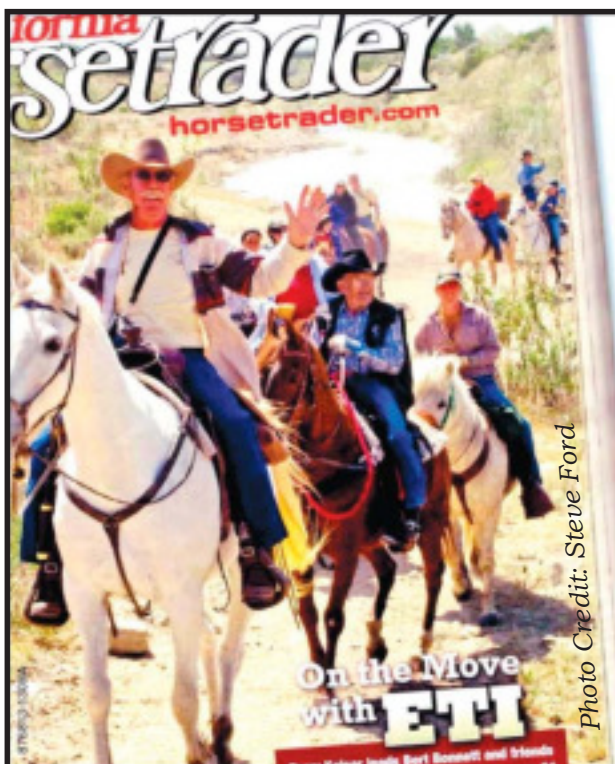


Photo Credit: Steve Ford

California Horsetrader

horsetrader.com

A Better Breed of Advertising™

In print. Online. Socially networked.

Be sure to read your ETI newsletter each month in *California Horsetrader*, and online at horsetrader.com! (Just click on "Read Digital Edition" at the top of the home page)

If you have anything equestrian you'd like to sell or market, call us and ask about our "ETI Member discount"!

Proud sponsors of Equestrian Trails, Inc.

760-546-1184



Non-ETI Size		Corrals Size		ETI Members Size	
Full Page	\$140	Full Page	\$75	Full Page	\$100
1/2 Page	\$75	1/2 Page	\$40	1/2 Page	\$65
1/4 Page	\$50	1/4 Page	\$27	1/4 Page	\$45
Business Card	\$25	Business Card	N/A	Business Card	\$15
Classified (3 lines)	\$10	Classified (3 lines)	\$7	Classified (3 lines)	\$7

Special discount rates for Full and 1/2 page with 12 month contract (4 printed issues & digital issues). Payment in full required.

All insertion rates are costs PER ISSUE and are due at time AD is submitted (unless a contract is signed for the 3X or annual rate).

Ad rates are for camera-ready artwork. Any setup will be charged at \$35 per page, 1/2 tone of pictures are \$10 each. Commercial advertisers, use 85 line-screen. Please submit by email at magazine@etinational.com We are publishing ONLINE every month.

Checklist For Membership Application Cards

Be sure to use the standard cards and not paper forms. If you need more cards please let us know.

Please Check Cards For Completeness And Legibility.

Oftentimes the information on the cards is hard to read. Membership fees are due on the member's anniversary date. Please notify members a month in advance of their anniversary date and send them a Membership Application card to complete and return to your Corral. If they renew late, 90 days or more, their anniversary date will change. Anyone who does not have current membership must pay single event fees at events.

Send cards in A.S.A.P. **Don't hold them.** For **Single** membership, list only the person applying for membership and no one else.

All ETI rides and events require that participants complete both sides of the ETI Waiver and Release.

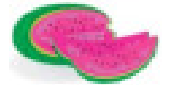
Non members must complete a Single Event form and pay \$10.00 for an individual for the day or weekend-camping membership. \$5.00 of this is to be sent with the forms back to the ETI office. A family membership for the event is \$20.00; \$10.00 goes to the ETI office.

The Waivers/Release as well as Single Event forms need to be received at the ETI office within two weeks of event.

Basic membership amounts are Family \$50; Senior \$35; Junior \$30. At Large Memberships are Family \$70; Senior \$50; Junior \$45.

Some Corrals charge additional amounts.

Please contact a Corral or send to ETI, P.O. Box 920668, Slymar, CA 91392



ETI MEMBERSHIP APPLICATION

Name (last): _____ First _____ Corral _____ *

Mailing Address: _____ Spouse: _____

City: _____ State: _____ Zip: _____

Phone: _____ Occupation: _____

Email Address: _____

_____ Junior (under 18) Birthdate _____ Dues Paid _____

_____ Adult (over 18) Dues Paid _____

_____ Family Sr " _____ Jr. # _____ Dues Paid _____

New _____ Renew _____ or Changing from Corral # _____ to Corral # _____

Signature: _____ Date: _____

Parent's signature if Junior only membership-under 18

* CHECK Please send me information for a Corral in my area. ETI (818) 698-6200

ETI National Programs

Horse Shows ETI has a National High Point Circuit. High Point Chair for 2019 is TBD. Until then, please contact the ETI office. Non-ETI members can participate in our ETI High Point Shows. But to be a part of the National High Point Circuit you must be an ETI member. You can sign up for the Circuit any time during the season, but must compete a specified number of times in your chosen classes to win awards. Points towards year end awards start accumulating on the date you sign up with the high point program.



The **Junior Ambassador Program** is open to all ETI youth age 7 to 21. Boys are welcome for the Prince and King category. Applications for the program may be obtained by contacting Cheri Ovayan at (818) 335-2884 covayan97@icloud.com. The completed forms are due back by April 2nd with all fees, sponsors, autobiography and pictures. This is a great way for our youth to represent their Corral and ETI. Participants volunteer their time at several mandatory events as well as many horse shows; trail trials, parades, trail dedications, quarterly dinner meetings and fun events just for the Junior Ambassador Court such as the retreat! Contact Michelle or any of the girls who have participated for more info on the fun activities.



Trail Rider Award Program (TRAP) keeps computerized logs on how many hours members are riding. In this day and age, when trails are giving way to housing developments, it is crucial that records be kept on trail usage. ETI Corrals in all areas are finding themselves having to defend their



riding areas more and more against encroaching civilization. On several occasions, TRAP records have been instrumental in maintaining trail access.

ETI TRAP acknowledges hours in the saddle with shoulder patches & pins that can be attached almost anywhere. The fee to join TRAP is only \$12.00 (you must maintain current ETI membership); then the TRAP membership is maintained each year for only \$6.00. You will start by receiving the TRAP main shoulder patch and your log sheets. As you achieve the hour goals additional patches will be sent to you. Carol Elliott is the TRAP chair. Please contact (760) 963-8209 or happy2appy@yahoo.com.

Trail Trials: An ETI Sanctioned Trail Trial consists of a trail ride, usually averaging between two and three hours, with trail obstacles along the way. Obstacles are natural, or simulate naturally occurring conditions for the horse and rider to negotiate. We now have a DVD from a clinic demonstrating obstacles and tips to compete or put on a Trail Trial. It is important to remember that the people doing the judging at sanctioned Trail Trial event are volunteers following the rulebook and are doing the best they can. Safety, control, and common sense are the number one priorities for all ETI sanctioned Trail Trials. Trail Trials are open to ETI members and Non-members. There are three divisions: Juniors for youth 14 years (as of Jan. 1st) and under; Novice and Open. Please contact the ETI office at (818) 698-6200 office@etinational.com.

