



Equestrian Trails, Inc.

Official Publication of Equestrian Trails, Inc.
Serving equestrians since 1944

Volume 25, Issue 1

January 2025

Come Lunch With Us Pg 4



Mark Your Calendars! Pg 12

*Dedicated to Equine Legislation, Good Horsemanship, and the
Acquisition and Preservation of Trails, Open Space and Public Lands*

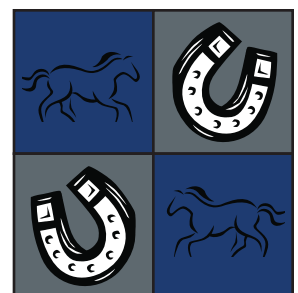
Inside this issue:

Corral 10	11
Obstacle Event	
Positivity Corner	13
Highlights From National Christmas Ride	14
31 Things To Do With Your Horse (Other Than Riding)	16
Corral News	21
Activity Corner	25
Stormwater Best Management	26

Upcoming Events

High Point Shows
Gymkhanas
Trail Trials & Rides

See pages 5 - 10



ETI Contact Info

EXECUTIVE BOARD

PRESIDENT: **Tom Kirsch**
tkirsch98@gmail.com (951) 733-8746

1st VICE PRESIDENT: **Nikki Ahten**
(818) 489-6527 nmahten@gmail.com

2nd VICE PRESIDENT: **Karen Dagnan**
karenqdagnan74@gmail.com (661) 268-8771

IMMEDIATE PAST PRESIDENT: **Linda Fullerton**
Linda@clearimageprinting.com (818) 612-3305

BOARD OF DIRECTORS

NATIONAL TRAIL COORDINATOR: **Liz Radley**
ranchohorses@gmail.com

AREA TRAIL COORDINATOR: **Elaine Macdonald**
emac43031@gmail.com
(661) 946-1976

AREA DIRECTORS

Area 3 (Corrals: 2, 3, 35) **Dottie Hilliard**
equidot@aol.com (626) 335-7112

Area 4 (Corrals: 66, 103) **VACANT**

Area 5 (Corrals: 14, 65, 83) **Patty Hug**
pattyhug@ca.rr.com (818) 367-2056

Area 6 (Corrals: 22, 36, 54) **VACANT**

Area 7 (Corrals: 10, 12, 20, 38, 101, 210)
Becky Borquez beckyborquez1@gmail.com
(818) 262-7764

Area 8 (Corrals: 37, 118) **VACANT**

Area 9 (Corrals: 43) **VACANT**

Area 11 (Corrals: 86, 88, 138) **VACANT**

Area 12 (Corrals: 357) **VACANT**

Area 13 (At-large members) **VACANT**



Equestrian Trails, Inc.

www.etinational.com

P.O. Box 920668
Sylmar, CA 91392
Phone: (818) 698-6200
Phone Hours: 9:00 am—4:00 pm



Patty Hug - Membership
Sarah Williams - Magazine, Website
Nikki Ahten - Insurance & Facebook

Convention: convention@etinational.com
High Point: highpoint@etinational.com
Insurance: insurance@etinational.com
Magazine: magazine@etinational.com
Membership: membership@etinational.com
Office: office@etinational.com
President's Office: president@etinational.com
Website: webmaster@etinational.com



Contents

- 4 Annual Presidents & Members Luncheon
- 5 Coming Events Calendar
- 9 ETI National Christmas Ride
- 11 Corral 10 Obstacle Event
- 12 ETI 2025 Spring Ride
- 13 Positivity Corner
- 14 Highlights From National Christmas Ride
- 16 31 Things To Do With Your Horse (Other Than Riding)
- 21 Corral News
- 25 Activity Corner
- 26 Stormwater Best Management Practices
- 27 TRAP
- 28 Updated ETI Waiver and Release
- 31 Announcements
- 32 ETI National Programs





A Message from Nikki Ahten ETI National 1st Vice President

Hello to all my fellow ETI members,

Happy New Year! It's hard to believe another year has come and gone. We look forward to this new year with great anticipation that ETI will continue to grow and thrive.



On December 15, ETI National had its first Christmas ride that was handed over to us from Corral 22. Unfortunately, sickness hit some of our ride crew and kitchen crew as well as some riders right before the event so our numbers were down, but our fun was not! Everyone that was able to make it had a great time! The food was, of course, delicious! Our cook crew in the Road Kill Café did an outstanding job as usual. We had a fun 50/50, some great surprise raffle prizes, as well as some close poker hands.

Coming up, on January 25, is the ETI Presidents and members luncheon. Corral Presidents and Vice Presidents, please mark your calendars now and plan on attending this very informative meeting. We ask that each corral send at least one representative. We will be discussing how the organization is doing, upcoming events, organization procedures (insurance & events) as well as sharing ideas. It's also an opportunity to get to know other ETI members and corrals and find out what they are doing so you can join them, too. ALL ETI MEMBERS are invited! So grab a fellow club member and carpool on over. No fee, just RSVP! See ad on pg. 4 for more info. No corral events should be scheduled for this date.

Thank you to the corrals that have turned in your 2025 calendars and rosters. If you haven't yet, please do so ASAP!!

Also, mark your calendar for the ETI Spring Ride this June in Chihuahua Valley. We already have RSVP's coming in, so don't wait and miss out because we are filled up! This is a fully catered ride! You don't want to miss this one. We'd love to see some new faces there.

I'm looking forward to seeing many of you on January 25!
Happy Trails!

Nikki

National Board Meeting

Next meeting will
January 20 at 7pm

Monthly meeting is via
conference call. If interested in
joining the call, email us at
office@etinational.com

Join us!

ETI SPECIAL EVENTS CHAIRPERSONS

ETI MOUNTED ASSISTANCE UNIT: Coordinator: Jean Chadsey (909) 967-2065 Jeanieac@aol.com

2025 SPRING RIDE (June 5-8): Nikki Ahten nmahten@gmail.com & Tom Kirsch tkirsch98@gmail.com

ETI TRAIL RIDER AWARD PROGRAM (TRAP): Carol Elliott (760) 963-8209 happy2appy@yahoo.com

ETI TRAIL TRIALS PROGRAM: ETI Office (818) 698-6200 office@etinational.com



ETI's Annual Presidents & Members Luncheon

Open to ALL ETI members!

Saturday, January 25, at 10am

New Hope Community Church
Activity Center
10438 Oro Vista Ave., Sunland

RSVP needed
by January 17

Find the Special Content that comes with a Digital Magazine!

If you're reading this online, look for active links and surprise "easter eggs"!



When you see these, click for a link.



When you see this symbol, click for a surprise!



Equestrian Trails Inc.

Coming Events Calendar

Corrals: Is your event listed below? If not, let us know! Is your event being cancelled? If yes, please let us know! insurance@etinational.com

If it is not listed accurately, it won't be covered!

All checks coming to National must be made out to: ETI or ETI Equestrian

NATIONAL CONTACTS

www.etinational.com

(818) 698-6200

P.O. Box 920668, Sylmar, CA 91392

Email addresses:

convention@etinational.com

highpoint@etinational.com

insurance@etinational.com

magazine@etinational.com

membership@etinational.com

office@etinational.com

president@etinational.com

webmaster@etinational.com

NATIONAL 2025

January 25/National

Annual Presidents/Membership Luncheon, New Hope Church Contact: Office office@etinational.com

June 5-8/National

Spring Ride, Warner Springs Contact: Nikki Ahten nmahten@gmail.com

December 14/National

Christmas Ride, Griffith Park Contact: office@etinational.com

2025 Individual Corral Circuit Shows/Series

Corral 37/Thousand Oaks

Saddle Series- 5 shows; May – November Contact: Sharyn Henry redhatcowgirl@yahoo.com

May 18, 2025

June 8, 2025

September 7, 2025

October 5, 2025

November 2, 2025 (raindate)

Corral 101/Hansen Dam Equestrian Center

5 show series - February - October Contact: Kim Estrada (818) 497-4730 rockbacknzip@aol.com

TRAIL TRIALS/OBSTACLE

February 1/Corral 10

RAIN DATE: February/8

Obstacle event, Mitchell Ranch

Contact: Gabrielle Dagan-Winstead (818) 899-6702 eticorral10@yahoo.com

May 17/Corral 20

Spring Trail Trial, Location TBD

Contact: Deb Mader/ Becky Borquez (818) 262-7764 beckyborquez1@gmail.com

November 8/Corral 20

8th Annual Terry Kaiser Trail Trial, Hansen Dam Contact: Deb Mader/ Becky Borquez (818) 262-7764 beckyborquez1@gmail.com

GYMKHANAS/PLAYDAYS

Corral 37/Thousand Oaks

7 gymkhanas; April – October

Contact: Sharyn Henry

redhatcowgirl@yahoo.com

April 12, 2025

May 10, 2025

June 21, 2025

July 19, 2025

August 16, 2025

September 20, 2025

October 18, 2025

Corral 43/Tri-Valley Riders

9 Gymkhana series Contact: Stefany Grainger (909) 917-6163

Corral 88/Dusty Spurs

Gymkhana series; February - November Phelan Contact: Leslie Davis (760) 662-1732 eticorral88@gmail.com

Corral 210

Monthly play days fourth Sunday of each month, Gibson Ranch, Sunland Contact: Jeanette Provolt (818) 472-6537 countryatheart.jp@verizon.net

2025 ETI Trail Rides, Drives, Events

When a Corral plans a ride at Vasquez Rocks, as a courtesy, please call the Rangers (661) 268-0840



JANUARY 2025

January 11/Corral 12

Trail ride, Griffith Park Contact: Patty Hug pattyhug@ca.rr.com

January 11/Corral 88

Trail Ride, Puma Canyon Contact: Lexi Albin (661) 388-8746

January 14/Corral 83

Red Rock Canyon Contact: Doris Lora (661) 333-7797

January 19/Corral 86

Sunday Brunch, Peaceful Valley Contact: Contact: Janette Beas (858) 692-6836

January 25/National

Annual Presidents/Membership Luncheon, New Hope Church Contact: Office office@etinational.com

January 26/Corral 22

Trail Ride, Challenger Park, Simi Valley Trail boss: Tom & Kat Smart Contact: Kathleen Smart (626) 590-6972 kathleensmart99@gmail.com

January TBD/Corral 66

Trail Ride Contact: Jamie Rees (760) 953-7235

January TBD/ Corral 103

Trail ride Contact: Dawn Walker (760) 961-7879 delta3743@verizon.net



Equestrian Trails Inc.

Coming Events Calendar

**Corrals: Is your event listed below? If not, let us know! Is your event being cancelled? If yes, please let us know! insurance@etinternational.com
If it is not listed accurately, it won't be covered!**

All checks coming to National must be made out to: ETI or ETI Equestrian

FEBRUARY 2025

February 1/Corral 10
RAIN DATE: February/8
Obstacle event, Mitchell Ranch
Contact: Gabrielle Dagan-Winstead
(818) 899-6702 eticorral10@yahoo.com

February 1/Corral 88
Trail Ride, Black Rock Contact:
Lexi Albin (661) 388-8746

February 2/Corral 43
Gymkhana, Riverside Contact:
Leslie Jones (310) 173-6877

February 8/Corral 35
RAIN DATE: March 8
Scavenger Hunt on Horseback, Glendora
Contact: Dottie Hilliard equidot@aol.com

February 8/Corral 88
Obstacle Challenge #1 Contact:
Marjorie Coulter (760) 490-5048

February 9/Corral 54
Trail ride, Sycamore Canyon Contact:
Carey Wendler (818) 266-7664

February 9/Corral 86
Trail ride, Vasquez Rocks Contact:
Contact: Amy Nelson

February 15/Corral 88
Dusty Spurs Gymkhana Contact:
Brandy Wade (760) 221-2325

February 15/ Corral 103
Trail ride Contact: Dawn Walker
(760) 961-7879 delta3743@verizon.net

February 16/Corral 12
Trail ride, Cheseboro Contact:
Patty Hug pattyhug@ca.rr.com

February 19/Corral 83
Trail ride, Cal-City Contact: Susan
Mustaffa (661) 538-0995

February 20/Corral 66
Trail Ride, Rainbow Basin Contact:
Jamie Rees (760) 953-7235

February 22/Corral 14
Barstow Play Day Contact:
Nora Moran (760) 253-3363

February 22/ Corral 20
Bert Bonnett Memorial Ride, Hansen Dam
Contact: Becky Borquez (818) 262-7764
beckyborquez1@gmail.com

February 22/Corral 22
Bert Bonnet & Doc Larsen ride, Ranger
Park Trail boss: Allan Johnson Contact:
Kathleen Smart (626) 590-6972
kathleensmart99@gmail.com

MARCH 2025

March 1/Corral 88
Trail Ride, Buffalo Meadows Contact:
Lexi Albin (661) 388-8746

March 8/Corral 12
Trail ride, Cherry Canyon Contact:
Patty Hug pattyhug@ca.rr.com

March 11/Corral 83
Trail ride, Juniper Hills Contact: Susan
Mustaffa (661) 538-0995

March 13-16/Corral 22
Camping, Black Rock, Yucca Valley
Trail boss: Billie McGuire Contact:
Kathleen Smart (626) 590-6972
kathleensmart99@gmail.com

March 15/Corral 10
Learn To Drive, Mitchell Ranch Contact:
Pam Miller Mitchell 818-262-2846
eticorral10@yahoo.com

March 15/Corral 35
St. Patrick's Day party, Glendora Contact:
Dottie Hilliard equidot@aol.com

March 15/Corral 86
Trail ride, Paramount Ranch
Contact: TBD

March 15/Corral 88
Dusty Spurs Gymkhana Contact:
Brandy Wade (760) 221-2325

March 16/Corral 43
Gymkhana, Riverside Contact:
Leslie Jones (310) 173-6877

March 16/ Corral 103
Trail ride, Summit Valley Contact:
Dawn Walker (760) 961-7879
delta3743@verizon.net

March 18/Corral 66
Trail Ride, Sawtooth Canyon Contact:
Jamie Rees (760) 953-7235

March 21-23/Corral 14
Bakersfield Scenic Preserve Drive
Contact: Jack and Sharon McGee
(661) 809-2113

March 23/Corral 54
Trail ride, Hill Canyon, Santa Rosa
Contact: Carey Wendler (818) 266-7664

March 29/Corral 83
Trail ride, Portal Ridge Contact: Doris Lora
(661) 333-7797

March 29/Corral 88
Open Horse Show #1 Contact:
Marjorie Coulter (760) 490-5048

APRIL 2025

April 2/Corral 88
Cow Sorting Practice Contact:
Noel Cook (951) 427-9343

April 5/Corral 88
Trail Ride, Antelope Valley Poppies
Contact: Lexi Albin (661) 388-8746

April 5/Corral 86
Poppy Ride Contact: Janette Beas
(858) 692-6836

April 8/Corral 83
Trail ride, Turbine Ride Contact:
Liz Komin (661) 304-5720



Equestrian Trails Inc.

Coming Events Calendar

Corrals: Is your event listed below? If not, let us know! Is your event being cancelled? If yes, please let us know! insurance@etinternational.com

If it is not listed accurately, it won't be covered!

All checks coming to National must be made out to: ETI or ETI Equestrian

April 9/Corral 88

Cow Sorting Practice Contact:
Noel Cook (951) 427-9343

April 11-13/Corral 14

Inyokern Wildflower Drive Contact:
Katie Christman (661) 824-2609 or
Denise Smith (760) 977-6046

April 12/Corral 20

AV Poppy Ride, Antelope Valley
Contact: Doris Lora (661) 303-0182
dlora@earthlink.net

April 12/Corral 37

Gymkhana, Thousand Oaks Contact:
Sharyn Henry redhatcowgirl@yahoo.com

April 12/Corral 88

Obstacle Challenge #2 Contact:
Marjorie Coulter (760) 490-5048

April 13/Corral 2

Trail Ride Contact: Ann Regan
annregan@sbcglobal.net

April 13/Corral 12

Trail ride, Vasquez Rocks Contact:
Patty Hug pattyhug@ca.rr.com

April 13/Corral 43

Gymkhana, Riverside Contact:
Leslie Jones (310) 173-6877

April 16/Corral 88

Cow Sorting Practice Contact:
Noel Cook (951) 427-9343

April 19/Corral 66

Play day, Bredelis Ranch Contact:
Jamie Rees (760) 953-7235

April 19/Corral 88

Dusty Spurs Gymkhana Contact:
Brandy Wade (760) 221-2325

April 22/Corral 83

Trail ride, Poppy Ride Contact:
Susan Mustaffa (661) 538-0995

April 23/Corral 88

Cow Sorting Practice Contact:
Noel Cook (951) 427-9343

April 27/ Corral 103

Trail ride, Turtle Valley Contact:
Dawn Walker (760) 961-7879
delta3743@verizon.net

April 30/Corral 88

Cow Sorting Practice Contact:
Noel Cook (951) 427-9343

MAY 2025

May 1-4/Corral 86

Camping, Joshua Tree Contact:
Janette Beas (858) 692-6836

May 3/Corral 88

Trail Ride - Wildwood Canyon Contact:
Lexi Albin (661) 388-8746

May 5/Corral 54

Cinco De Mayo Trail ride Contact:
Carey Wendler (818) 266-7664

May 6/Corral 83

Trail ride, Panorama Preserve Contact:
Susan Mustaffa (661) 538-0995

May 7/Corral 88

Cow Sorting Practice Contact:
Noel Cook (951) 427-9343

May 10/Corral 12

Trail ride, Ahmanson Ranch Contact:
Patty Hug pattyhug@ca.rr.com

May 10/Corral 22

Progressive Dinner Ride, Agua Dulce
Trail boss: Craig Tognazzini Contact:
Kathleen Smart (626) 590-6972
kathleensmart99@gmail.com

May 10/Corral 37

Gymkhana, Thousand Oaks Contact:
Sharyn Henry redhatcowgirl@yahoo.com

May 11/Corral 88

Cow Sorting #1 Buckle Series
Contact: Noel Cook (951) 427-9343

May 14/Corral 88

Cow Sorting Practice Contact:
Noel Cook (951) 427-9343

May 17/Corral 20

Spring Trail Trial, Location TBD
Contact: Deb Mader/ Becky Borquez (818)
262-7764 beckyborquez1@gmail.com

May 17/ Corral 103

Trail ride, Mojave River Forks
Contact: Dawn Walker (760) 961-7879
delta3743@verizon.net

May 17-18/Corral 88

2 Day Buckle Series
Dusty Spurs Gymkhana Contact:
Brandy Wade (760) 221-2325

May 18/Corral 37

Ranch Horse Show, Thousand Oaks
Contact: Sharyn Henry
redhatcowgirl@yahoo.com

May 18/Corral 43

Gymkhana, Riverside Contact:
Leslie Jones (310) 173-6877

May 20/Corral 66

Kentucky Derby watch party Contact:
Jamie Rees (760) 953-7235

May 20-25/Corral 14

Bishop Mule Days &
Come Drive with Me (TBD)

May 21/Corral 88

Cow Sorting Practice Contact:
Noel Cook (951) 427-9343

May 24/Corral 83

Trail ride, Mulligan Ride Contact:
Kim Brandon (661) 714-6038

May 25/Corral 86

Trail Ride, Hansen Dam Contact:
Shirlee Kurtz (805) 573-6406

May 25/Corral 88

Cow Sorting #2 Buckle Series
Contact: Noel Cook (951) 427-9343

May 28/Corral 88

Cow Sorting Practice Contact:
Noel Cook (951) 427-9343

**Equestrian Trails Inc.****Coming Events Calendar**

Corrals: Is your event listed below? If not, let us know! Is your event being cancelled? If yes, please let us know! insurance@etnational.com

If it is not listed accurately, it won't be covered!

All checks coming to National must be made out to: ETI or ETI Equestrian

JUNE 2025**June 4/Corral 88**

Cow Sorting Practice Contact:
Noel Cook (951) 427-9343

June 5-8/National

Spring Ride, Warner Springs Contact:
Nikki Ahten nmahten@gmail.com

June 8/Corral 37

Ranch Horse Show, Thousand Oaks
Contact: Sharyn Henry
redhatcowgirl@yahoo.com

June 8/Corral 88

Cow Sorting #3 Buckle Series Contact:
Noel Cook (951) 427-9343

June 11/Corral 88

Cow Sorting Practice Contact:
Noel Cook (951) 427-9343

June 13/Corral 83

Trail ride, Stallion Sprngs Buckeye Contact:
Susan Mustaffa (661) 538-0995

June 13-15/Corral 14

Onyx Drive Contact: Jim and
Julie Porter (760) 378-2222

June 14/Corral 88

Trail/Poker Ride, Mojave Narrows
Contact: Marjorie Coulter (760) 490-5048

June 18/Corral 88

Cow Sorting Practice Contact:
Noel Cook (951) 427-9343

June 21/Corral 37

Gymkhana, Thousand Oaks Contact:
Sharyn Henry redhatcowgirl@yahoo.com

June 21/Corral 43

Gymkhana (night), Riverside Contact:
Leslie Jones (310) 173-6877

June 21/Corral 86

Progressive Ride & Fundraiser
Contact: Dana Colin

June 21/Corral 88

Dusty Spurs Gymkhana Contact:
Brandy Wade (760) 221-2325

June 21/ Corral 103

Trail ride, Wildwood Park, Yucaipa
Contact: Dawn Walker (760) 961-7879
delta3743@verizon.net

June 22/Corral 88

Cow Sorting #4 Buckle Series
Contact: Noel Cook (951) 427-9343

June 25/Corral 83

Trail ride, Cub Lake Wine Ride Contact:
Kim Brandon (661) 714-6038

June 25/Corral 88

Cow Sorting Practice Contact:
Noel Cook (951) 427-9343

June TBD/Corral 3

Play day, Tehachapi Contact: Cindi
schaubcindi@aol.com

JULY 2025**July 4/Corral 66**

Newberry Springs Parade Contact:
Jamie Rees (760) 953-7235

July 9-14/Corral 20

Camping, Montana del Oro Contact:
Becky Borquez (818) 262-7764
beckyborquez1@gmail.com

July 12/Corral 12 & 22

Trail Ride, Mt. Pinos, Frazier Park Contact:
Pattu Hug pattyhug@ca.rr.com

July 12/Corral 66

Moonlight Trail Ride, Tevis Contact:
Jamie Rees (760) 953-7235

July 12/Corral 86

Trail Ride, Castaic Contact:
Vicky Marshall

July 13/Corral 54

Trail ride, Happy Camp Contact: Carey
Wendler (818) 266-7664

July 16/Corral 83

Trail ride, Stallion Springs Golf Crs Contact:
Susan Mustaffa (661) 538-0995

July 17-20/Corral 86

Camping, Rancho Oso Contact: Janette
Beas (858) 692-6836

July 18-25/Corral 12

Camping, Morro Bay Contact:
Patty Hug pattyhug@ca.rr.com

July 19/Corral 37

Gymkhana, Thousand Oaks Contact:
Sharyn Henry redhatcowgirl@yahoo.com

July 19/Corral 88

Dusty Spurs Gymkhana Contact:
Brandy Wade (760) 221-2325

July 19/ Corral 103

Moonlight Trail ride, Apple Valley
Contact: Dawn Walker (760) 961-7879
delta3743@verizon.net

July 21-27/Corral 88

Camping, Montana d'Oro Contact:
Deborah Jasper (760) 508-3100

AUGUST 2025**August 2/Corral 88**

Trail Ride, Norco Contact:
Lexi Albin (661) 388-8746

August 16/Corral 37

Gymkhana, Thousand Oaks Contact:
Sharyn Henry redhatcowgirl@yahoo.com

August 16/Corral 43

Gymkhana (night), Riverside Contact:
Leslie Jones (310) 173-6877

August 16/Corral 86

Trail ride, Mt. Pinos Contact: Janette Beas
(858) 692-6836

August 16/Corral 88

Dusty Spurs Gymkhana Contact:
Brandy Wade (760) 221-2325



Equestrian Trails Inc.

Coming Events Calendar

Corrals: Is your event listed below? If not, let us know! Is your event being cancelled? If yes, please let us know! insurance@etnational.com

If it is not listed accurately, it won't be covered!

All checks coming to National must be made out to: ETI or ETI Equestrian

August 18-25/Corral 12 & 22

Camping, Montana de Oro, Morro
Bay Trail boss: Patty Hug & Kat Smart
Contact: Kathleen Smart (626) 590-6972
kathleensmart99@gmail.com

August 23/Corral 54

Trail ride, Oxnard Beach Contact: Carey
Wendler (818) 266-7664

August 23/Corral 66

Tacking Cleaning Contact: Jamie Rees
(760) 953-7235

SEPTEMBER 2025

September 3-7/Corral 86

Camping, Sierras Contact: Steve Nelson

September 6/Corral 22

Moonlight ride, Hideaway Trail boss:
Allan Johnson & Billie McGuire Contact:
Kathleen Smart (626) 590-6972
kathleensmart99@gmail.com

September 6/Corral 88

Obstacle Challenge #3 Contact:
Marjorie Coulter (760) 490-5048

September 6-13/Corral 14

Fearful Crossing (Lovelock to
Fallon, NV) Contact: Jeanette
Hayhurst (760) 953-8520

September 7/Corral 37

Ranch Horse Show, Thousand Oaks
Contact: Sharyn Henry
redhatcowgirl@yahoo.com

September 7/Corral 88

Trail Ride, Wrightwood Contact:
Lexi Albin (661) 388-8746

September 13/Corral 12

Trail ride, Hansen Dam Contact:
Patty Hug pattyhug@ca.rr.com

September 13/Corral 83

Trail ride, Tehachapi Winery Contact:
Carolyn McIntyre (661) 972-2337

September 14/Corral 43

Gymkhana, Riverside Contact:
Leslie Jones (310) 173-6877

September 14/ Corral 103

Trail ride, Juniper Flats Contact:
Dawn Walker (760) 961-7879
delta3743@verizon.net

September 20/Corral 20

Trail Ride, Happy Camp, Moorpark
Contact: Jeanne Mather (805) 208-7372
matherj@aol.com

September 20/Corral 37

Gymkhana, Thousand Oaks Contact:
Sharyn Henry redhatcowgirl@yahoo.com

September 20/Corral 66 & 103

Trail Ride Contact: TBD

September 20/Corral 88

Dusty Spurs Gymkhana Contact:
Brandy Wade (760) 221-2325

September 27/Corral 86

Trail ride, Santa Rosa Valley Contact:
Kathy Mydock

September TBD/Corral 3

Trail ride Contact: Cindi
schaubcindi@aol.com

OCTOBER 2025

October 4/Corral 88

Phelan Phun Days Parade Contact:
Deborah Jasper (760) 508-3100

October 5/Corral 12

Trail ride, Acton Contact:
Patty Hug pattyhug@ca.rr.com

October 5/Corral 37

Ranch Horse Show, Thousand Oaks
Contact: Sharyn Henry
redhatcowgirl@yahoo.com

October 7-10/Corral 83

Camp out, Chihuahua Contact: Susan
Mustafa (661) 538-0995

October 9-12/Corral 22

Camping, Alabama Hills, Lone Pine
Trail boss: Allan Johnson Contact:
Kathleen Smart (626) 590-6972
kathleensmart99@gmail.com

October 11/Corral 86

Trail ride, Agua Dulce Contact:
Laurie Henry

October 18/Corral 37

Gymkhana, Thousand Oaks Contact:
Sharyn Henry redhatcowgirl@yahoo.com

October 18/Corral 66

Peggy Sue Charity Trail Ride Contact:
Jamie Rees (760) 953-7235

October 18/Corral 88

Dusty Spurs Gymkhana Contact:
Brandy Wade (760) 221-2325

October 19/Corral 2

Trail Ride Contact: Ann Regan
annregan@sbcglobal.net

October 19/Corral 22

Trail ride, Paramount Ranch, Malibu
Creek State Park Trail boss: Paul Jacques
Contact: Kathleen Smart (626) 590-6972
kathleensmart99@gmail.com

October 19/Corral 43

Gymkhana, Riverside Contact:
Leslie Jones (310) 173-6877

October 19/Corral 54

Halloween Scavenger Hunt Trail ride,
Mountain Meadows Contact: Carey
Wendler (818) 266-7664

October 18-19/ Corral 103

Camping, Mojave Narrows Contact:
Dawn Walker (760) 961-7879
delta3743@verizon.net

October 23 - November 2/Corral 14

Death Valley Drive Contact: Sue Martzolf
(760) 662-6102



Equestrian Trails Inc.

Coming Events Calendar

Corrals: Is your event listed below? If not, let us know! Is your event being cancelled? If yes, please let us know! insurance@etnational.com

If it is not listed accurately, it won't be covered!

All checks coming to National must be made out to: ETI or ETI Equestrian

October 25/Corral 20

Trail Cleanup, Hansen Dam Contact:
Becky Borquez (818) 262-7764
beckyborquez1@gmail.com

October 25/Corral 83

Trail ride, TWCC Wine Ride Contact: TBD

November 2 (rain date)/Corral 37

Ranch Horse Show, Thousand Oaks
Contact: Sharyn Henry
redhatcowgirl@yahoo.com

October 25/Corral 88

Open Horse Show #2 Contact:
Marjorie Coulter (760) 490-5048

NOVEMBER 2025

November 1/Corral 88

Trail Ride, Oak Hills Contact:
Lexi Albin (661) 388-8746

November 4/Corral 83

Trail ride, Vasquez Rocks Contact:
Kim Brandon (661) 714-6038

November 8/Corral 20

8th Annual Terry Kaiser Trail Trial,
Hansen Dam Contact: Deb Mader/
Becky Borquez (818) 262-7764
beckyborquez1@gmail.com

November 8/ Corral 103

Trail ride, Puma Canyon Contact:
Dawn Walker (760) 961-7879
delta3743@verizon.net

November 8-9/Corral 22

Camping, Mulligan Stew Ride, Mojave
Narrows Trail boss: Billie McGuire
Contact: Kathleen Smart (626) 590-6972
kathleensmart99@gmail.com

November 9/Corral 43

Gymkhana, Riverside Contact:
Leslie Jones (310) 173-6877

November 15/Corral 12

Sylmar Turkey ride Contact:
Patty Hug pattyhug@ca.rr.com

November 15/Corral 54

Trail ride, Paramount Ranch Contact:
Carey Wendler (818) 266-7664

November 15/Corral 86

Trail ride, Placerita Contact: Janette
Beas (858) 692-6836

November 15/Corral 88

Dusty Spurs Gymkhana Contact:
Brandy Wade (760) 221-2325

November 20/Corral 83

Trail ride, Cal City Contact: TBD

November 22/Corral 66

Trail Ride, Newberry Springs Contact:
Jamie Rees (760) 953-7235

**November 29/Corral 88
Rain Date**

Dusty Spurts Gymkhana Contact:
Brandy Wade (760) 221-2325

DECEMBER 2025

December 2/Corral 83

Christmas Party Contact: Carolyn McIntyre
(661) 972-2337

December 7/Corral 88

Trail Ride, Vazquez Rocks Contact:
Lexi Albin (661) 388-8746

December 9/Corral 66

Corral 66 Christmas Party Contact:
Jamie Rees (760) 953-7235

December 12/Corral 22

Corral 22 Christmas Party Contact:
Kathleen Smart (626) 590-6972
kathleensmart99@gmail.com

December 13/Corral 14

Christmas Party Contact:
Sue Martzolf (760) 662-6102

December 14/National

Christmas Ride, Griffith Park Contact:
office@etnational.com

December 14/Corral 54

Chatsworth Christmas Parade Contact:
Carey Wendler (818) 266-7664

December 19/Corral 54

Corral Christmas Party Contact: Carey
Wendler (818) 266-7664

December 20/Corral 86

Corral 86 Christmas Party Contact:
Janette Beas (858) 692-6836

NON ETI EVENTS

AVDR Gymkhana

Antelope Valley Desert Riders
Contact: Alanna Layton
alannalayton@yahoo.com

**Carousel Ranch Therapeutic
Riding Program**

(661) 268-8010

ELSA

Experience.Learning.Support.w/Animals
Therapeutic riding program
(310) 403-966 www.elsainc.org

Head's Up Therapy on Horseback

Nancy (818) 848-0870
www.headsuptherapy.com

Ride On Therapeutic Horsemanship

program for disabled riders
(818) 700-2971 www.rideon.org

**Shadow Hills Riding Club
Therapeutic Riding Program**

Contact Johnny: (818) 352-2166
www.shadowhillsridingclub.org





Obstacle Event

February 1, 2025

Condition your horse to a variety of obstacles on horseback or carriage.

BRUNCH is included in the price! (Please R.S.V.P. by 1/25/25)
9:30 a.m. gates open; 12-1 lunch; 3 p.m. gates close
Location: 11001 Longford Ave., Lake View Terrace

Please complete a separate entry for each horse-rider (driver) combination.
 Please include the required ETI waiver with your entry form; waiver available to download at etinational.com or eticorral10.wixsite.com/my-site/forms

MUST SHOW CURRENT MEMBERSHIP TO RECEIVE MEMBER DISCOUNT.

Rider/Driver Name:		Member Corral No.
Address:		
City:		Zip Code:
E-mail address:		
EMERGENCY CONTACT:		Telephone(s):
Horse Name:		
Owner's Name (if differs):		Telephone:
Obstacle Event Fees	\$35.00 ETI Member	\$
	\$45.00 Non Member	\$
additional meal	\$10.00 x	\$
Checks Payable to E.T.I Corral 10	TOTAL	\$

Mail to: GDW/Obstacle Event
 11342 Ruggiero Ave., Lake View Terrace, CA 91342

OR E-mail entry to: eticorral10@yahoo.com
 & mail payment or pay on-site

Questions or more information – Visit our website: eticorral10.wixsite.com/my-site/
 Call Gabrielle 818-899-6702 or e-mail: eticorral10@yahoo.com

MEANS OF PAYMENT: CASH: \$ CHECK # AMOUNT: \$






ETI NATIONAL ANNUAL SPRING RIDE

June 5 – June 8 2025

ETI SPRING RIDE

Chihuahua Valley Horse Camp, Warner Springs

<p>Individual Sites with Corrals, Water & Shade *Arena * Round Pen * * Wash Rack * Showers * * Lots of Fun with Friends *</p>		<p>* Wagon-wheel rides * Delicious food catered by our famous cook shack crew</p>
---	---	--

Ride Chairs: Nikki Ahten & Tom Kirsch
Contact Nikki Ahten Email: OFFICE@ETINATIONAL.COM

PRICE: \$275 ETI MEMBERS – \$300 NON-MEMBERS BY MAY 10
\$300 ETI members – \$325 Non-Members May 11-31

INCLUDES: Camp Fees, Dinner Thursday thru Breakfast Sunday

RESERVATIONS DEADLINE MAY 20, 2025
\$50 NON-REFUNDABLE. AFTER MAY20 NO REFUNDS

MAIL APPLICATIONS TO: ETI OFFICE P.O BOX 920668, SYLMAR CA 91392

CHECKS PAYABLE TO: EQUESTRIAN TRAILS, INC.

NAME: _____

ADDRESS: _____

CITY: _____ STATE: _____ ZIP: _____

PHONE: _____ EMAIL: _____

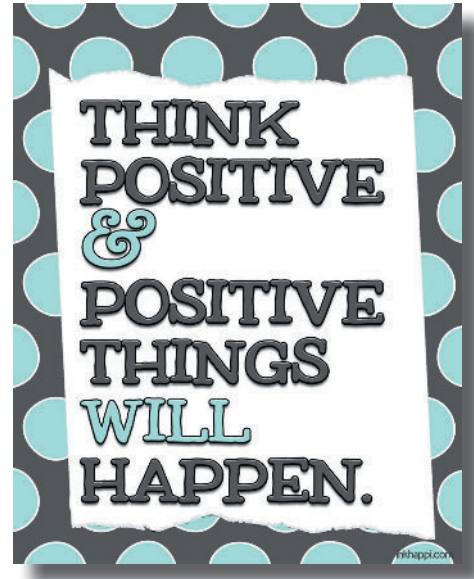
NAME ON TAG: _____

PAYMENT BY CHECK #: _____ AMOUNT ENCLOSED: _____

EMERGENCY CONTACT: _____ PHONE: _____

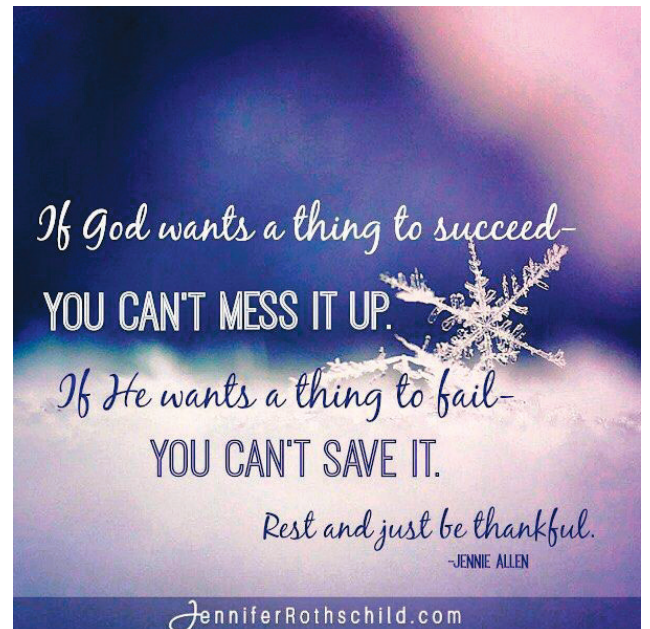
DIET: VEGETARIAN___ REGULAR___

Please use one form for each person. Make as many copies of this form as you need.
Everyone must sign a Waiver & Release form that will be provided.



We all need encouragement and positive energy...especially these days. Each month, I'm going to send some positivity your way on this page. If you have a favorite saying, please share at magazine@etinational.com and I'll include the following month!!

Your Editor





Highlights from the National Christmas Ride December 15, 2024





Highlights from the National Christmas Ride December 15, 2024





31 Things To Do With Your Horse (Other Than Riding)

www.horsetricks101.com (September 18, 2015)

Sometimes you can't ride. Sometimes you don't want to. Here are 31 fun and useful things to do with your horse – other than riding.

BONDING TIME

1. Take your horse for a walk and explore the neighborhood. Let your horse graze, sniff and see new sights. In the wild, horses travel vast distances and come across different things every day. Your horse will really enjoy exploring new places with you.
2. Hang out with your horse. Sit in your horse's pasture. No agenda. You might find that your horse will come over and stand near you and enjoy this 'do nothing' time. Take a book if you find it hard to just sit.



Find a treat your horse really likes. This can be used for training, as a reward when they do something really well, or just as a special treat because you love them.

4. Find your horse's 'favorite scratching spot'. A lot of horses love to be scratched in a certain spot. Find that special spot. It is usually somewhere they can't reach, like their withers, or the top of their neck. Look for signs that you have found 'the spot'. These include eyes glazing over, a quivering lip or they may return the favor by scratching you. Research has shown that rubbing or scratching a horse on its withers has a calming effect. If you can find a spot your horse really loves then you can use this as a reward during training.



5. Have a picnic with your horse. Go and join your horse in their pasture. Take some food for you and some favorite treats for your horse.
6. Lead your horse to water, and let them play. Find a waterhole, river or pond. Take your horse there on a long lead line, and let them get wet. Most horses will walk in and paw the water and splash around, especially if it is a hot day.
7. Try training your horse without any restraints, at liberty. Your training will need to be fun and engaging to encourage your horse to stay with you. But it is wonderful when they make the choice to be with you.
8. Braid your horse's mane. Be creative. Be gentle. Most horses like to have their mane stroked or gently brushed.



31 Things To Do With Your Horse (Other Than Riding) (cont.)

www.horsetricks101.com (September 18, 2015)

USEFUL TRAINING EXERCISES

9. Line up with a mounting block. Teach your horse to position their body alongside a mounting block or raised area so it is easier for you to get on. It will also put less strain on your horse's body and limbs if you get on this way.
10. Pick up things you have dropped. Teach your horse to pick things up, for example your hat. This will be helpful if you drop something while you are riding. You won't have to get off – just ask your horse to pick up the object and pass it to you.
11. Ground tie. Teach your horse to stand still without needing to be tied up. This is very useful if you don't have anywhere to tie your horse or you just need your horse to stand calmly.
12. Get your horse used to ropes around their body and legs. This is super helpful if your horse ever gets caught up in anything – they are far less likely to panic.
13. Stand inside a hula hoop. Practice getting your horse's front feet or their back feet inside a hula hoop laying on the ground. This is a good exercise to help you get really precise at moving your horse's feet.



14. Teach your horse to drop their head. See how close to the ground you can get their nose. Asking your horse

to lower their head can have a calming effect and makes bridling a lot easier.



15. Back your horse by just pointing at their chest or nose. This will make it easier to move your horse around.
16. Work on those little annoying problems. Does your horse do something that is a bit annoying but you just put up with it? Spend a few minutes every day just working on fixing this problem. Several short sessions are better than one long one.
17. Pick up your horse's feet by just pointing at them. No need to bend down and lift heavy legs. Just point and your horse will pick up their foot and hold it up. The farriers love this one!
18. Build an obstacle horse course. Start simple and then add items as your horse gets more confident. Horses are naturally curious so they will enjoy exploring these new objects. Plus obstacle courses are a great way to get your horse used to scary objects while they are at home and this can make them calmer out on the trail. Add things to your obstacle



31 Things To Do With Your Horse (Other Than Riding) (cont.) www.horsetricks101.com (September 18, 2015)

course that you might find when you are out riding, for example rubbish bins and plastic bags.

19. Teach your horse a USEFUL trick. There are so many tricks you can teach your horse. There are all the usual ones like kiss, hug, bow etc, but also have a think about teaching your horse some useful tricks. These can make life a whole lot easier (and safer) around your horse. Here are some USEFUL TRICK ideas.

HEALTHY ACTIVITIES

20. Make de-worming time stress free. Get your horse used to a syringe BEFORE you have to actually de-worm them. If you spend a bit of time teaching your horse that a syringe is a good thing then it will make de-worming time SO much easier. I like to fill an empty and clean syringe with apple sauce and give my horses this once a week. When I have to actually de-worm them it is easy.

21. Get to know your horse's normal vital signs. Work out how many breathes your horse takes per minute when resting and after exercise. Also check temperature and heart rate. Then you will have a base measure if you need to compare them if your horse is ever sick or injured.



22. Get fit with your horse. Lots of people walk their dogs to get fit – why not walk your horse? Or for those that are fitter, try jogging with your horse. You could also include some ground work training.

23. Increase your horse's mealtime. Horses living in the wild eat for about 16 hours a day. If you horse has an empty stomach for a long time this can cause a lot of problems including cribbing and ulcers. If your horse is stabled or has limited grazing spread out the time they are eating by placing some large smooth rocks in their feed bin (just make sure they are too big to put in their mouth or swallow). Your horse will need to push the rocks around to get to their feed and this will extend the time they are eating.

JUST FOR FUN

24. Do a Little Dancin'. Teach your horse some simple steps, crank up the music and dance!

25. Teach Your Horse to Paint. It seems that some horses are quite creative. Horses can be taught to pick up a paint brush and apply paint to a canvas. The result is a beautiful, impressionistic painting.



26. Find some 'edible' toys for your horse. There are lots of wonderful horse toys available now. Horses love to play and providing toys can really cure boredom. Try a toy that gets them thinking or gets them active. Research has shown that horses prefer toys that dispense food. Look for toys that your horse can push around to get at the food.



31 Things To Do With Your Horse (Other Than Riding) (cont.)

www.horsetricks101.com (September 18, 2015)

27. Include toys in your training
28. Dress your horse up and take photos to send to your friends to give them a smile.
29. Stand on a pedestal. Teach your horse to stand up on things. As long as the object is solid and stable you can teach your horse to stand on just about anything.



30. Hold a show. Get together with friends and practice 'showing' your horse. Make it fun by holding classes such as the 'Horse With The Glossiest Coat' or the 'Longest Tail' or the 'Softest Muzzle'.



31. Teach your horse tricks. This is my favorite. Trick training can be used to teach your horse many of the fun and useful things above – it is an excellent way to improve the bond with your horse, get them used to all sorts of different things and make training really enjoyable.

Thanks to:

<https://www.horsetricks101.com/2015/09/31-things-to-do-with-your-horse-other-than-riding/#:~:text=31%20Things%20To%20Do%20With%20Your%20Horse%20%28other,and%20let%20them%20play.%20...%20More%20items...%20>





Sarah Dawn Designs

HAVE hope

TRY new things

BE active

SEE the good

SAY "I Love You," more

CHALLENGE yourself

CHOOSE to be happy

EAT better

ENJOY today

FORGIVE more readily

READ more often

BECOME your best you





CORRAL NEWS

Corral 2

Pasadena/San Gabriel/Altadena
 Pres. Ann Regan
 (818) 321-6931



Corral 3

Walnut Creek
 Pres. Cindi Schaub
 (909) 354-1613



Corral 10

Lakeview Terrace
 Pres. Pam Miller
 (818) 262-2846



Corral 12

Sylmar Vista Del Valle
 Pres. Patty Hug
 (818) 367-2056



Corral 14

Western Wagons Mojave
 Pres. Jeanette Hayhurst
 (769) 953-8520



Corral 20

Shadow Hills Rough Riders
 Pres. Cheri Ovayan
 (818) 335-2884



Corral 22

Intervalley Trail Riders
 Pres. Kathleen Smart
 (626) 590-6792
www.corral22.com



Corral 35

Oak Canyon Riding Club
 Glendora
 Pres. Dottie Hilliard
 (626) 335-7112



Corral 37

Conejo Riders
 Thousand Oaks
 Pres. Sharyn Henry
 (805) 795-6493
www.eticorral37.org



Corral 38

Griffith Park Equestrians
 Burbank/Glendale
 Pres. Diana Hoch
 (818) 841-6422
www.corral38eti.com



Corral 43

Tri Valley Riders
 Nuevo/Riverside/Norco/Hemet
 Pres. Leslie Jones
 (310) 173-6877



Corral 54

Rocky Hill Riders
 Chatsworth
 Pres. Carey Wendler
careywendler@yahoo.com



Corral 66

Route 66 Riders
 Barstow/Newberry Springs
 Pres. Jamie Rees
 (760) 953-7235



Our next event is our annual Christmas Party on December 10, 2024 at 6pm. The party will take place at the Bredelis Ranch. The club will be offering parmesan chicken and roast beef. Please bring your favorite side dish to share. For more information, please contact Jamie Rees at (760) 953-7235.

Jamie Rees
 Corral 66 President

Corral 83

Tehachapi Mountain Riders
 Tehachapi
 Pres. Carolyn McIntyre
 (661) 972-2337



What an AWESOME December we had for great riding weather! Phenomenal. We are headed into the last two weeks of the year as I write this article, and the weather is predicted to remain unseasonably warm and sunny for the rest of the month, so still time to get in your last days of 2024 riding.

Corral 83 had the annual Christmas potluck dinner, gift exchange, and installation of the 2025 officers on Wednesday, December 4th at the Bear Valley Springs (BVS) Equestrian Center Club house, to start out our December



activities. Then the following weekend, local communities had Christmas Parades. Tehachapi City Parade was Saturday evening, but before that was the California City Christmas Parade.

Back in November, Kristy Hightower of Corral 22 invited various Corrals to come to California City and ride in their Christmas Parade that took place in the afternoon of December 7th. I recognized, right away, Tiffany and Paul from Corral 22 had made the trek up from SFV. There were at least three riders on BLM mustangs...Rachel on a roan in full winter coat and her daughter, Hayden, riding a flea-bitten gray. Many riders were in festive holiday costumes with decorated equines, as well. I would have liked to have spent more time talking to each of the riders to find out how far they traveled to participate in the parade, and which Corral they represented. It was my first time riding in the California City Christmas Parade. I was the only Corral 83 member. I would love to do it again next year.

Kristy captured some amazing pictures of the participants, and I have submitted some with this article.



The following weekend, Saturday, December 14, the festivities continued. Susan Mustaffa invited Corral 83 members to partner up with BVS Horseman's Association and ride in the BVS Christmas Parade. But before the parade, many community members and Corral 83 members helped Amanda H, CEO and founder of Tehachapi Valley Horse Rescue (TVHR), pull off another amazing Christmas Cookie Walk. Tables filled with trays of Christmas Cookies of all kinds rimmed the walls of the BVS Eq Center Clubhouse from 9-12. Participants purchased a box then made their way around the room filling their box with homemade cookies. The sales started at 9:00am and by 10:30am Vivette L. told me they had already collected \$450 in donations and sales of boxes. By Saturdays end, the fundraiser had received \$1,000 in donations and sales. The afternoon part of the cookie sale took place at the Triassic Vineyards. Carolyn M helped with the sales there along with others. Amanda offered a special thanks to all the cookie bakers and those who came out to help with the cookie sales. Vivette, Sharon, Carolyn, Carrie,



Julie, Richella, thank you for supporting this worthy horse rescue.

In addition to cookies, there were rosemary plants with Christmas lights and a Christmas stocking made from recycled denim jeans. Amanda said she would love to have more of those to sell in the Tack Store that supports TVHR. I'll see what I can do to help her out with that.

I guess I should mention who the 2025 Slate of Officers for Corral 83 are. Top of the list, Carolyn McIntyre, Pres. Next up, Nancy Thompson, Vice President followed by Liz Komin, Secretary. Wendy Ransom continues to be the Treasurer, while Susan Mustaffa is the Trail Ride Coordinator. Doris Lora is serving as Delegate and Scribe. We have some newer members who are interested in leading rides and expanding our out-of-town ride options.

We did have a December ride scheduled, but needed to be rescheduled, I think it's supposed to happen Saturday, December 21. I'll have to report on that in February as the ride will be after the online magazine deadline. I think we have a mid-January ride scheduled out in the desert. Red Rock Canyon SP or California City.

Check the calendar for details, and contact the ride leader if you want to participate. As always rides are dependent on weather and road conditions. High winds may affect travel and towing on Highway 14 and 58.

Happy Trails and Happy New Year.
Doris Lora

Corral 86

Vasquez Vaqueros
Agua Dulce/Canyon Country/Acton
Pres. Shirlee Kurtz
(805) 573-6406



Corral 88

Tri Community Horsemen
Phelan/Pinon Hills/Wrightwood
Pres. Noel Cook
(951) 427-9243



We closed out the year with awards for Obstacle Challenge Buckle Series for:

In Hand:

Hi Point: Susan Figley
Reserve: Kathy Siverson

Novice:

Hi Point: Sherry Kraig
Reserve: Cindy Franey

Intermediate:

Hi Point: Lilly Adams
Reserve: Cadie Felton

Advanced:

Hi Point: Melinda Smith



In Hand Champion: Susan Figley

Cow Sorting Awards for the Buckle Series:v

Champions: Lexi, AJ, Lynette

Reserve: Brandy, Jennifer, Haley

3rd: Taylor, June, Pam



Cow Sorting Champion: Lexi Alvin



Corral 101

Route 101 Horse Show Circuit
Lake View Terrace
Pres. Dawn Surprenant
(661) 433-9069
www.route101horseshow.com



Corral 103

Hesperia Happy Horsemen
Hesperia/Apple Valley
Pres. Dawn Walker
(760) 961-7879



Corral 118

Simi Valley
Pres. Dean Wageman
(323) 816-1683
www.eti118.com



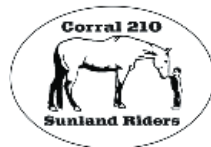
Corral 138

Barrel Springs Rider
Antelope Valley/Palmdale
Pres. Kimberly Dwight
(661) 478-2770



Corral 210

Sunland Riders
Sunland/Gibson Ranch
Pres. Jeanette Provolt
(818) 472-6537



2019 "What Do I Do with My Horse, Cat, Dog, Child, Gerbil in Fire, Flood, and/or Earthquake?"

Are your animals MICROCHIPPED? FIRE SEASON never disappears here in Southern California! MICROCHIPS - A 'must have item' if you must evacuate your property, and you want to get your animal(s) safely back home again. So easy to get through your veterinarian.

Hopefully you still have your copy of this booklet! If you cannot find your copy, you may download this booklet FREE at www.etinational.com, look for Forms & Documents. For information, contact Stephanie Abronson (818) 222 PONY; Stephanie@abronson.com.

ALWAYS BE PREPARED FOR FIRES!

THIS SEASON -- When you drive past the Fire Dept. Forestry Unit on Las Virgenes Rd. and notice that the warning sign says "HIGH FIRE DANGER", take special notice!! We are at risk! Our children are at risk! Our animals are at risk! Our homes are at risk! BE PREPARED!! Get out your copy of: "What Do I Do with My Horse, Cat, Dog, Child, Gerbil in Fire, Flood, and/or Earthquake?"

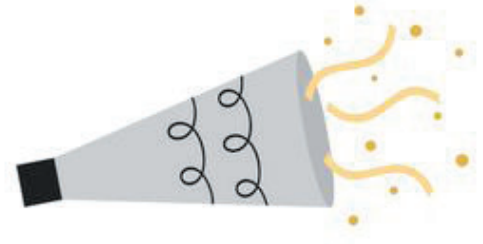


Every inch of this booklet is helpful whether you own a horse or not.





HAPPY NEW YEAR!



W	I	H	V	V	A	X	R	N	R	Z	G	O	A	L	S	A	Z	Y	F
G	R	B	K	G	Z	T	Y	Z	I	Z	Z	J	Q	C	O	M	P	X	B
M	D	M	B	T	B	K	T	P	X	N	S	L	T	K	C	X	X	W	T
M	I	Q	C	R	A	E	Y	W	E	N	O	Z	J	K	S	K	R	N	H
L	P	D	M	V	X	P	N	Z	J	L	O	V	Z	V	Y	D	Z	Q	G
G	P	E	X	A	X	K	O	Q	N	C	O	U	N	T	D	O	W	N	I
F	V	Z	N	D	S	S	M	B	P	C	Y	W	V	F	T	W	F	B	N
T	R	S	P	S	P	A	R	K	L	E	R	S	H	Q	T	O	J	A	D
P	J	O	L	B	Y	V	M	S	Y	L	N	N	N	R	C	A	F	L	I
Y	L	P	E	N	S	K	R	O	W	E	R	I	F	Z	N	Y	C	L	M
X	J	K	E	B	D	P	P	G	W	B	K	N	J	U	G	J	W	O	J
W	I	S	C	F	S	F	L	D	B	R	G	P	A	J	E	X	A	O	K
Q	S	C	A	O	W	D	J	R	M	A	W	R	T	J	H	Q	H	N	C
F	R	Q	K	J	N	W	P	A	R	T	Y	P	O	P	P	E	R	S	O
K	E	P	A	U	J	F	G	X	M	I	Z	X	R	T	S	X	K	Q	L
V	E	N	R	I	Y	E	E	B	G	O	Q	Y	I	U	P	H	K	Y	C
Y	H	I	S	I	R	E	O	T	J	N	O	I	T	U	L	O	S	E	R
Q	C	S	H	A	P	P	Y	G	T	B	O	U	V	C	D	L	R	Z	G
R	M	Q	G	Q	X	Y	B	N	O	I	S	E	M	A	K	E	R	G	F
N	A	E	N	K	V	K	T	Y	F	H	R	R	A	Y	R	Y	I	A	V

Countdown
Confetti
Midnight
Balloons

Celebration
Fireworks
January
Happy



New Year
Clock
Cheers
Goals

Party Poppers
Noisemaker
Resolution
Sparklers





Biological Controls - Nature's Way
Encourage the use of swallows, bats and other insect eating animals on your residence. For more information, call: 1 (800) 974-9794

Chemical Controls - Your Last Resort
Use these least-toxic products:

- Pyrethrin-based insecticides
- Dehydrating dusts (e.g. silica gel)
- Insecticidal soaps
- Horticultural oils

Pesticide Disposal



Rinse empty pesticide containers and treat the rinse water as you would the product. Dispose of empty containers in the trash.

City of Los Angeles residents should dispose of unused household toxics at a HazMobile instead of into the sink. Call 1 (800) 98-TOXIC (8-6942) for the location nearest you.

Dumping toxics into the street, gutter or storm drain is illegal!

Residents outside the City of Los Angeles can call the reference numbers listed in this pamphlet to learn more about the proper disposal of household toxics.



Spill Response Agencies

City of Los Angeles
Department of Public Works, Bureau of Engineering
Stormwater Management Division
1 (800) 974-9794

City of Los Angeles
Police Department, Hazardous Materials Unit
(213) 237-2793 or (213) 485-4011
Los Angeles Fire Department
Health/Hazardous Materials Program
City: (213) 485-6185 County: (213) 890-4045

Recycling & Hazardous Waste Disposal

City of Los Angeles
Small Business Hazardous Waste Hotline
(800) 98-TOXIC / 988-6942

Solid Resources Citywide Recycling Division
(213) 847-1444

Los Angeles County
Department of Public Works
Recycling & Household Hazardous Waste Hotline
1 (800) 552-5218

To Report Illegal Dumping

City of Los Angeles
Department of Public Works, Bureau of Engineering
Stormwater Management Division
1 (800) 974-9794

Los Angeles County
Department of Public Works
1 (800) 303-0003

To Report a Clogged Catch Basin

City of Los Angeles
Department of Public Works, Bureau of Engineering
Stormwater Management Division
1 (800) 974-9794

Los Angeles County
Department of Public Works
(818) 458-HELP

This is one in a series of pamphlets describing storm drain protection measures. Other pamphlets include:

- Automotive Maintenance & Car Care
- Food Service Industry
- Fresh Concrete & Mortar Application
- General Construction & Site Supervision
- Heavy Equipment & Earthmoving Activities
- Home Repair & Remodeling
- Landscaping, Gardening & Pest Control
- Painting
- Swimming Pool, Jacuzzi & Fountain Maintenance
- Roadwork & Paving

For more information about storm drain protection or additional pamphlets, call:



The authors acknowledge the contributions of the King Conservation District in Renton, WA for the information in this pamphlet.

Printed on Recycled Paper 1/98

Stormwater Best Management Practices (BMPs)



Horse Owners & Equine Industry

Safe Environmental Habits and Procedures for:

- Boarding Stables
- Equestrian Centers
- Small Farms
- Urban Horse Owners

Stormwater Management Division Department of Public Works

Ocean Pollution Prevention It's Up to Us



Los Angeles has two drainage systems—the sewers and the **storm drains**. The storm drain system was designed to prevent flooding by carrying excess rainwater away from city streets out to the ocean.

Because the system contains no filters, it now serves the *unintended* function of carrying urban pollution straight to the ocean.

This pamphlet tells you how to prevent ocean pollution from "stormwater" or "urban runoff."

Rain, industrial and household water mixed with urban pollutants creates stormwater pollution. The pollutants include: oil and other automotive fluids, paint and construction debris, yard and pet wastes, pesticides and litter.

Urban runoff pollution flows to the ocean through the storm drain system—1,500 miles of pipes that take water and debris straight from Los Angeles streets to the ocean. Each day, 100 million gallons of polluted urban runoff enter the ocean untreated, leaving toxic chemicals in our surf and over 4,300 tons of trash on our beaches annually.

Urban runoff pollution contaminates the ocean, closes beaches, harms aquatic life and increases the risk of inland flooding by clogging gutters and catch basins.

These Best Management Practices (BMPs) will ensure a cleaner ocean and city.

Animal Waste Problems

Animal waste contributes to ocean pollution when it is improperly stored or left uncovered near small streams and storm drains. During rainfall, it is washed into storm drains and flows untreated, directly into the ocean.

Animal waste contains some nutrients—phosphorus and nitrogen—as well as bacteria. The nutrients fertilize the aquatic plants causing their proliferation which depletes oxygen in the water, killing sea life. The high bacteria levels in the water can cause gastrointestinal disorders and other medical problems for swimmers.

Sediment is also a common pollutant washed from pastures and livestock facilities. It creates multiple problems once it enters the ocean. It harms sea life by clogging the gills of fish, blocking light transmission and increasing ocean water temperature.



Solutions

Facilities Design

- Site barns, corrals and other high-use areas on the portion of property that drains away from the nearest creek or stream.
- Install gutters that will divert runoff away from livestock area.
- Design diversion terraces which drain into areas with sufficient vegetation to filter the flow.
- Protect manure storage facilities from rainfall and surface runoff.

Pasture Management

- Confine animals in properly fenced areas except for exercise and grazing time.
- Corrals, stables and barns should be located on higher ground when possible and surrounded by pasture to act as a natural filtration system.
- Utilize fencing to keep horses away from environmentally sensitive areas and protect stream banks from contamination.
- Use manure and soiled bedding sparingly to fertilize pastures and croplands.

Grazing Management

- Establish healthy and vigorous pastures with at least 3 inches of leafy material present.
- Subdivide grazing areas into three or more units of equal size.
- Clip tall weeds and old grass to control weeds and stimulate grass regrowth.
- Rotate animals to clean pasture when grass is grazed down to 3-4 inches.
- Let pasture regrow to 8-10 inches before allowing regazing.
- Keep animals away from wet fields when possible.
- During heavy rainfall, consider indoor feeding, a practice which keeps more manure under roof and away from runoff.



Collection and Storage

Collect soiled bedding and manure on a daily basis from stalls and paddocks and place in temporary or long-term storage units. Store in sturdy, insect resistant and seepage free units such as:

- Plastic garbage cans with lids.
- Fly-tight wooden or concrete storage sheds.
- Composters.
- Pits or trenches lined with an impermeable layer.



Use and Disposal

- Compost soiled bedding and manure for your own use.
- Give away composted material to local greenhouses, nurseries and botanical parks.
- Transport manure to topsoil companies or composting centers.
- Fertilize pastures, cropland and lawns with manure and soiled bedding. **Do not** apply fertilizer just before or during rainstorms.

Pesticide Alternatives

The "chemicals only" approach to pest control is only a temporary fix. *Integrated Pest Management* is a more common sense approach for a long-term solution. Plan your "IPM" strategy in this order:

- Physical Controls
 - Pheromone Traps
 - Tarps
 - Bug Zappers
 - Fly-Tight Storage Sheds





Trail Rider Award Program

T. R. A. P.



**It's TRAP! What is "TRAP" you ask?
TRAP is ETI's Trail Rider Award Program!**

**What does it do?
A heck of a lot more than it sounds!**

If you have any questions about the TRAP Program, call TRAP Chairperson Carol Elliott, (760) 963-8209. All completed logs and CHECKS should be sent to Carol Elliott: 6990 Ord View Rd; Apple Valley Ca 92308. happy2appy@yahoo.com

All your TRAP dues of \$6.00 are due in January.

ETI TRAP keeps computerized logs on how many hours members are riding and where.

In this day and age, when trails are giving way to housing developments, it is crucial that records be kept on trail usage.

ETI Corrals in all areas are finding themselves having to defend their riding areas more and more against encroaching civilization. On several occasions, TRAP records have been instrumental in maintaining trail access.

When a Corral calls ETI TRAP and identifies a specific problem area, TRAP not only provides them with actual riding statistics of usage, but TRAP members are notified to increase usage and support in that particular area.

Documentation from 'trail logs' turned in by TRAP members are proof that trails are being used by equestrians.

ETI TRAP acknowledges hours in the saddle with shoulder patches and pins that can be attached almost anywhere.

Lest we offend the "cart" people, TRAP also counts those non-arena hours of driving time spent on the trails.

How much does all this cost? It's cheap!!! The fee to join TRAP is only \$12.00 (you must maintain current ETI membership); then the TRAP membership is maintained each year for only \$6.00.

You will start by receiving the TRAP main shoulder patch (about the size of a police patch), and your log sheets. As you hit the hour goals (100, 200, 500, etc.), additional patches will be sent to you. When you reach the higher levels, your hours will be acknowledged with pins instead of patches.

Why should the Show people get all the awards?



TRAIL RIDER AWARD

Program application



Name _____ Corral # _____

Address _____ City _____

State _____ Zip _____ Phone(_____) _____ Email _____

New \$12. _____ Renew \$6. _____ ALL DUE January 1 or NOW

Send with Check, Money Order or Credit Card info _____

NEW Mail to: Carol Elliott, ETI TRAP; 6990 Ord View Rd; Apple Valley CA, 92308



**WAIVER & RELEASE
FOR EQUESTRIAN TRAILS, INC., ACTIVITIES**

**This Is A Waiver of Your Legal Rights, And An Agreement Not To Sue
Serious Injury Or Death May Result From Riding Or Being Near Horses**

ETI Event _____ Location _____ Date _____

1. **Participant's Name** (print): _____
Address: _____ **City:** _____ **State:** _____ **Zip** _____
Telephone: (____) _____ **Email:** _____ **ETI Member** ___ **If Yes, Corral #:** _____

2. **Liability Release.**

In consideration for Equestrian Trails, Inc. ("ETI") allowing me or my child to voluntarily participate in its activities, I agree as follows:

- a. This agreement, waiver and release applies to ETI and to ETI's affiliated Corrals, committees, employees, predecessors, successors, attorneys, insurers, members and volunteers who are working in the course and scope of their duties on behalf of ETI, including its affiliated Corrals, at the time of occurrence of any act or omission which is later alleged to be a cause or contribution to a claim for injury, damages or death ("Released Parties");
- b. I forever release, hold harmless and indemnify Released Parties from liability for any and all claims, demands, causes of action, damages, injuries or death to me, my minor children, my horse and my property, and legal liability of every nature, including the negligent acts or omissions of any Released Parties, whether known or unknown, anticipated or unanticipated, direct or indirect, arising out of participation in the past, present or future ETI activities (including equestrian activities, such as the riding, use of, or being near, horses, whether at an arena, stable or on a trail ride in association with ETI) and I assume all risks of injury or death as set forth in this release;
- c. I shall not bring any lawsuit, action or proceeding against any Released Parties, even if they engage in negligent conduct; and
- d. I make this agreement, waiver and release for and on behalf of myself, my spouse, my child and/or ward, heirs, administrators, successors, representatives and assigns.

3. **Activity Risk.**

I understand that some ETI activities take place in isolated or wilderness areas over rough terrain, and/or trails of unknown condition and others take place on land or in facilities owned and managed by others from whom such land or facilities are borrowed or rented. I understand that the organizers, workers and members involved in ETI activities are not professionals in the horse industry, or in the planning or conducting of trips or camping events, or in other areas of expertise involved in ETI activities. I also understand that horseback riding is a rugged adventure, recreational sport activity. I am aware that there are numerous obvious and non-obvious inherent risks of serious injury or death, or property damage, to me or my horse, which are always present in ETI activities, on or near horses. I understand that pregnant women are specifically advised not to ride horses. I understand that ETI is a non-profit club of private individuals who have come together to support and enjoy recreation-oriented activities.

4. **Nature of Horses.**

I understand that no horse is completely safe, and the Released Parties make no representations or guarantees regarding the safety, training or suitability of any horse. Horses are 5 to 15 times larger, 20 to 40 times more powerful, and 3 to 4 times faster than a human. If I fall from a horse to the ground, it will generally be at a distance of 4 to 6 feet, and the impact will injure me. A horse may divert from its training and act according to its natural survival instincts and may abruptly change directions or speed, trip, slip, fall, stop short, shift its weight, buck, rear, kick, bite, spook, or run from what it perceives to be danger if it is frightened or provoked, or for no reason whatsoever.

5. **Conditions of Nature & Locations.**

I agree that the Released Parties are not responsible for acts, occurrences or elements of nature or a particular location that can injure a person or scare a horse, cause it to trip, fall or react in some other manner. These elements include thunder, lightning, rain, wind, wild and domestic animals, insects, other people and horses, and reptiles which may walk, run, fly near, bite and/or sting a horse or person, irregular footing on groomed or wild land which is subject to constant change according to weather, temperature, natural and manmade



objects. The Released Parties have not inspected, and make no representations or warranties concerning the safety or condition of, any trail, camping site, arena and/or other location of ETI events.

6. Helmet Warning.

I am aware that protective head gear which meets or exceeds the quality standards of the SEI certified and ASTM standard F1163 equestrian helmet, should be purchased and worn by me and/or my child while riding and being near horses, and the wearing of such helmet may reduce the severity of some head injuries and may prevent my serious injury or death as a result of a fall or other occurrence. If I or my minor child do not wear a helmet, it is because we so choose.

I HAVE READ, UNDERSTOOD AND VOLUNTARILY AGREE TO THIS TWO-PAGE WAIVER & RELEASE. I FURTHER AGREE THAT NO ORAL STATEMENTS, REPRESENTATIONS OR INDUCEMENTS APART FROM THIS WRITTEN AGREEMENT HAVE BEEN MADE TO ME TO OBTAIN MY CONSENT.

Dated: _____ Participant's Signature: _____

(Printed Name)

IF PARTICIPANT IS UNDER 18, SIGNATURE OF AGREEMENT BY PARENT OR LEGAL GUARDIAN IS ALSO REQUIRED, AND SUCH PERSON FURTHER AGREES, PURSUANT TO PARAGRAPH 2, ABOVE, TO RELEASE AND INDEMNITY THE RELEASED PARTIES FOR ANY INJURY OR DEATH TO, OR ANY CLAIM BY OR ON BEHALF OF, SUCH MINOR:

Minor's Birth Date: _____
Dated: _____ Signature: _____
Relationship to Minor: _____
(Printed Name of Signor)

ETI Witness (print name): _____ Corral # _____

Description of Event Where Signed: _____



Give the gift that gives all year long...
An ETI Membership!



Contact the ETI Office for more information at (818) 698-6200 or
Join online at
www.etinational.com

Display Your Equestrian Pride!

Contact the ETI office for Stickers at (818) 698-6200 or office@etinational.com



ETI Bell logo
Small 3" x 4" for inside vehicle window \$3.00

8" X 10" for gate or trailer \$6.00

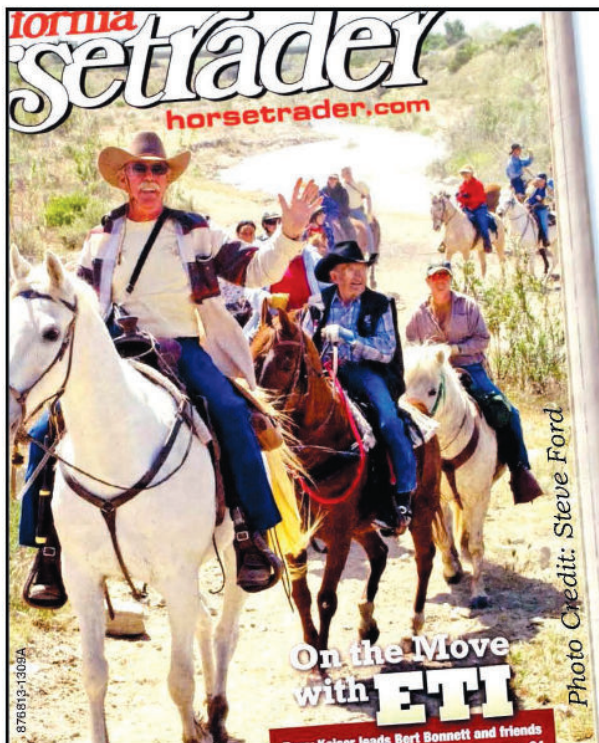


got trails?

Got Trails?
Stickers \$5.00
Available in White or Black



United We Ride \$3.00



California Horsetrader

A Better Breed of Advertising™

In print. Online. Socially networked.

Be sure to read your ETI newsletter each month in *California Horsetrader*, and online at horsetrader.com! (Just click on "Read Digital Edition" at the top of the home page)

If you have anything equestrian you'd like to sell or market, call us and ask about our "ETI Member discount"!

Proud sponsors of Equestrian Trails, Inc.

760-546-1184



Non-ETI Size		Corrals Size		ETI Members Size	
Full Page	\$140	Full Page	\$75	Full Page	\$100
1/2 Page	\$75	1/2 Page	\$40	1/2 Page	\$65
1/4 Page	\$50	1/4 Page	\$27	1/4 Page	\$45
Business Card	\$25	Business Card	N/A	Business Card	\$15
Classified (3 lines)	\$10	Classified (3 lines)	\$7	Classified (3 lines)	\$7

Special discount rates for Full and 1/2 page with 12 month contract (4 printed issues & digital issues). Payment in full required.

All insertion rates are costs PER ISSUE and are due at time AD is submitted (unless a contract is signed for the 3X or annual rate).

Ad rates are for camera-ready artwork. Any setup will be charged at \$35 per page, 1/2 tone of pictures are \$10 each. Commercial advertisers, use 85 line-screen. Please submit by email at magazine@etinational.com We are publishing ONLINE every month.

Checklist For Membership Application Cards

Be sure to use the standard cards and not paper forms. If you need more cards please let us know.

Please Check Cards For Completeness And Legibility.

Oftentimes the information on the cards is hard to read. Membership fees are due on the member's anniversary date. Please notify members a month in advance of their anniversary date and send them a Membership Application card to complete and return to your Corral. If they renew late, 90 days or more, their anniversary date will change. Anyone who does not have current membership must pay single event fees at events.

Send cards in A.S.A.P. **Don't hold them.** For **Single** membership, list only the person applying for membership and no one else.

All ETI rides and events require that participants complete both sides of the ETI Waiver and Release.

Non members must complete a Single Event form and pay \$10.00 for an individual for the day or weekend-camping membership. \$5.00 of this is to be sent with the forms back to the ETI office. A family membership for the event is \$20.00; \$10.00 goes to the ETI office.

The Waivers/Release as well as Single Event forms need to be received at the ETI office within two weeks of event.

Basic membership amounts are Family \$50; Senior \$35; Junior \$30.

At Large Memberships are Family \$70; Senior \$50; Junior \$45.

Some Corrals charge additional amounts.

Please contact a Corral or send to ETI, P.O. Box 920668, Slymar, CA 91392

ETI MEMBERSHIP APPLICATION

Name (last): _____ First _____ Corral _____ *

Mailing Address: _____ Spouse: _____

City: _____ State: _____ Zip: _____

Phone: _____ Occupation: _____

Email Address: _____

_____ Junior (under 18) Birthdate _____ Dues Paid _____

_____ Adult (over 18) Dues Paid _____

_____ Family Sr " _____ Jr. # _____ Dues Paid _____

New _____ Renew _____ or Changing from Corral # _____ to Corral # _____

Signature: _____ Date: _____

Parent's signature if Junior only membership-under 18

* CHECK Please send me information for a Corral in my area. ETI (818) 698-6200

ETI National Programs

Horse Shows ETI has a National High Point Circuit which is currently on hiatus. Until then, please contact the ETI office. Non-ETI members can participate in our ETI High Point Shows. But to be a part of the National High Point Circuit you must be an ETI member. You can sign up for the Circuit any time during the season, but must compete a specified number of times in your chosen classes to win awards. Points towards year end awards start accumulating on the date you sign up with the high point program.



The **Junior Ambassador Program** is open to all ETI youth age 7 to 21. Boys are welcome for the Prince and King category. Applications for the program may be obtained by contacting Cheri Ovayan at (818) 335-2884 covayan97@icloud.com. The completed forms are due back by April 2nd with all fees, sponsors, autobiography and pictures. This is a great way for our youth to represent their Corral and ETI. Participants volunteer their time at several mandatory events as well as many horse shows; trail trials, parades, trail dedications, quarterly dinner meetings and fun events just for the Junior Ambassador Court such as the retreat! Contact Michelle or any of the girls who have participated for more info on the fun activities.



Trail Rider Award Program (TRAP) keeps computerized logs on how many hours members are riding. In this day and age, when trails are giving way to housing developments, it is crucial that records be kept on trail usage. ETI Corrals in all areas are finding themselves having to defend their



riding areas more and more against encroaching civilization. On several occasions, TRAP records have been instrumental in maintaining trail access.

ETI TRAP acknowledges hours in the saddle with shoulder patches & pins that can be attached almost anywhere. The fee to join TRAP is only \$12.00 (you must maintain current ETI membership); then the TRAP membership is maintained each year for only \$6.00. You will start by receiving the TRAP main shoulder patch and your log sheets. As you achieve the hour goals additional patches will be sent to you. Carol Elliott is the TRAP chair. Please contact (760) 963-8209 or happy2appy@yahoo.com.

Trail Trials: An ETI Sanctioned Trail Trial consists of a trail ride, usually averaging between two and three hours, with trail obstacles along the way. Obstacles are natural, or simulate naturally occurring conditions for the horse and rider to negotiate. We now have a DVD from a clinic demonstrating obstacles and tips to compete or put on a Trail Trial. It is important to remember that the people doing the judging at sanctioned Trail Trial event are volunteers following the rulebook and are doing the best they can. Safety, control, and common sense are the number one priorities for all ETI sanctioned Trail Trials. Trail Trials are open to ETI members and Non-members. There are three divisions: Juniors for youth 14 years (as of Jan. 1st) and under; Novice and Open. Please contact the ETI office at (818) 698-6200 office@etinational.com.

