



Equestrian Trails, Inc.

Official Publication of Equestrian Trails, Inc.
Serving equestrians since 1944

Volume 25, Issue 12

December 2025

National Christmas Ride Pg 10

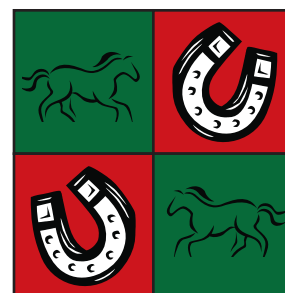
Inside this issue:

Don't Miss An Issue	4
TRAP	12
Positivity Corner	13
Tasty Holiday Treat Recipes For Your Horse	14
Activity Corner	16
Corral News	18
Emergency Preparedness For Your Horse	23

Upcoming Events

High Point Shows
Gymkhanas
Trail Trials & Rides

See pages 5 - 9



**Come Lunch With Us!
Pg 11**

Dedicated to Equine Legislation, Good Horsemanship, and the Acquisition and Preservation of Trails, Open Space and Public Lands

ETI Contact Info

EXECUTIVE BOARD

PRESIDENT: **Tom Kirsch**
tkirsch98@gmail.com (951) 733-8746

1st VICE PRESIDENT: **Nikki Ahten**
(818) 489-6527 nmahten@gmail.com

2nd VICE PRESIDENT: **Karen Dagnan**
karenqdagnan74@gmail.com (661) 268-8771

IMMEDIATE PAST PRESIDENT: **Linda Fullerton**
Linda@lindafullerton.com (818) 612-3305

BOARD OF DIRECTORS

NATIONAL TRAIL COORDINATOR: **Liz Radley**
ranchohorses@gmail.com

AREA TRAIL COORDINATOR: **Elaine Macdonald**
emac43031@gmail.com (661) 946-1976

AREA DIRECTORS

Area 3 (Corrals: 2, 3, 35) **Dottie Hilliard**
equidot@aol.com (626) 335-7112

Area 4 (Corrals: 66, 103) **VACANT**

Area 5 (Corrals: 14, 65, 83) **Patty Hug**
pattyhug@ca.rr.com (818) 367-2056

Area 6 (Corrals: 22, 36, 54) **VACANT**

Area 7 (Corrals: 10, 12, 20, 38, 101, 210)
Becky Borquez beckyborquez1@gmail.com
(818) 262-7764

Area 8 (Corrals: 37, 118) **VACANT**

Area 9 (Corrals: 43) **VACANT**

Area 11 (Corrals: 15, 86, 88, 138) **Michael Fahnestock**
MrMichael0007@gmail.com
(818) 635-6180

Area 12 (Corrals: 357) **VACANT**

Area 13 (At-large members) **VACANT**

Equestrian Trails, Inc.

www.etinational.com

P.O. Box 920668
Sylmar, CA 91392
Phone: (818) 698-6200
Phone Hours: 9:00 am—4:00 pm

Patty Hug - Membership
Sarah Williams - Magazine, Website
Nikki Ahten - Insurance & Facebook

Convention: convention@etinational.com
High Point: highpoint@etinational.com
Insurance: insurance@etinational.com
Magazine: magazine@etinational.com
Membership: membership@etinational.com
Office: office@etinational.com
President's Office: president@etinational.com
Website: webmaster@etinational.com



Contents

- 4 Never Miss An Issue Again! Subscribe!
- 5 Coming Events Calendar
- 10 ETI National Christmas Ride
- 11 Annual Presidents & Members Luncheon
- 12 TRAP
- 13 Positivity Corner
- 14 Tasty Holiday Treat Recipes For Your Horse
- 16 Activity Corner
- 18 Corral News
- 23 Emergency Preparedness For Your Horse
- 24 Updated ETI Waiver and Release
- 27 Announcements
- 28 ETI National Programs





A Message from Tom Kirsch ETI National President

Hello to all:

The ETI National Board was held via phone conference. We are doing good financially, and our membership is staying about the same. I hope everyone had a great Thanksgiving. This year is quickly coming to a close. Christmas is here.!!!



I hope the membership reads the magazine this month. There are some great events being put on by National and the corrals. The Christmas ride is on December 14 at Griffith Park. The information is in the magazine on page X and on our website. If you can't ride, come join us for lunch.

The ETI National Board wants to wish the membership and families a very Merry Christmas and a Happy and great New Year. Be safe and look out for each other.

Tom



National Board Meeting

Our next meeting will be The Christmas Ride on December 14.

Our monthly meeting, via conference call, will resume in January.
If interested in joining the call, email us at office@etinational.com.

ETI SPECIAL EVENTS CHAIRPERSONS

2026 SPRING RIDE (June 11-14): Nikki Ahten nmahten@gmail.com & Tom Kirsch tkirsch98@gmail.com

ETI TRAIL RIDER AWARD PROGRAM (TRAP): Carol Elliott (760) 963-8209 happy2appy@yahoo.com



Never Miss An Issue Again!!!

Just go to etinational.com and scroll down to the magazines.
Fill out the form and hit SUBSCRIBE!!

Sign up for our magazine here...

Fill in the form below to receive ETI National online magazine as well as event information for ETI rides, trail obstacle events, trail trials, gymkhana, horse shows and play days.

Subscribe to ETI National Magazine!

Find the Special Content that comes with a Digital Magazine!

If you're reading this online, look for active links and surprise "easter eggs"!



When you see these, click for a link.



When you see this symbol, click for a surprise!



Equestrian Trails Inc.

Coming Events Calendar

Corrals: Is your event listed below? If not, let us know! Is your event being cancelled? If yes, please let us know! insurance@etinational.com

If it is not listed accurately, it won't be covered!

All checks coming to National must be made out to: ETI or ETI Equestrian

NATIONAL CONTACTS

www.etinational.com
(818) 698-6200
P.O. Box 920668, Sylmar, CA 91392

Email addresses:

convention@etinational.com
highpoint@etinational.com
insurance@etinational.com
magazine@etinational.com
membership@etinational.com
office@etinational.com
president@etinational.com
webmaster@etinational.com

NATIONAL 2025

December 14/National
Christmas Ride, Griffith Park Contact:
office@etinational.com

NATIONAL 2026

June 11-14/National
Spring Ride, Chihuahua Valley Contact:
office@etinational.com

2026 Individual Corral Circuit Shows/Series

Corral 37/Thousand Oaks
Ranch Horse - 4 shows; May – November
Contact: Sharyn Henry
redhatcowgirl@yahoo.com

May 3
June 14
September 27
October 11

Corral 101/Hansen Dam Equestrian Center
5 show series - February - October
Contact: Kim Estrada (818) 497-4730
rockbacknzip@aol.com

Schedule TBD

GYMKHANAS/PLAYDAYS

Corral 37/Thousand Oaks

7 gymkhanas; April – October
Contact: Sharyn Henry
redhatcowgirl@yahoo.com

Corral 43/Tri-Valley Riders

9 Gymkhana series Contact: Stefany Grainger (909) 917-6163

Corral 88/Dusty Spurs

Gymkhana series; February - November
Phelan Contact: Leslie Davis (760) 662-1732 eticorral88@gmail.com

Corral 210

Monthly play days fourth Sunday of each month, Gibson Ranch, Sunland
Contact: Jeanette Provolt (818) 472-6537
countryatheart.jp@verizon.net

2025 ETI Trail Rides, Drives, Events

When a Corral plans a ride at Vasquez Rocks, as a courtesy, please call the Rangers (661) 268-0840



DECEMBER 2025

December 4/Corral 83

Trail ride, Cal City Contact: Susan Mustaffa (661) 538-0995

December 6/Corral 88

Trail ride, Vasquez Rocks Contact: Noel Cook (951) 427-9343

December 7/Corral 88

Horse Show, Phelan Contact: Noel Cook (951) 427-9343

December 14/National

Christmas Ride, Griffith Park Contact:
office@etinational.com

December 14/Corral 15

Guided Ride at Calico Ghost Town
\$50 per rider, Contact: Kimberly Cannoles
kimberlycannoles@gmail.com

December 14/Corral 54

Chatsworth Christmas Parade Contact: Carey Wendler (818) 266-7664

December 14/Corral 138

La Cabana Christmas Toy ride Contact: Kimberly Dwight (661) 478-2770
jdwright@aol.com

December 28/Corral 210

Playday, Gibson Ranch Contact: Jeanette Provolt countryatheart.jp@verizon.net

2026 ETI Trail Rides, Drives, Events

JANUARY 2026

January 3/Corral 15

Trail Ride, Saddleback Butte State Park
Contact: Lexi Albin (661) 338-8746
lexijanene@gmail.com

January 10/Corral 12

Trail ride, Griffith Park Contact: Patty Hug pattyhug@ca.rr.com

January 15/Corral 83

Trail ride, Red Rock Contact: Doris Lora (661) 333-7797

January 17/Corral 66

Trail ride, RJB Ranch Contact: Jamie Rees (760) 953-7235

January 18/Corral 22

Trail ride, Challenger Park/Simi Valley Trail Boss: Tom & Kat Smart Contact: Kathleen Smart kathleensmart99@gmail.com

January 24/National

Annual Presidents/member luncheon, New Hope Community Church Contact: office@etinational.com



Equestrian Trails Inc.

Coming Events Calendar

Corrals: Is your event listed below? If not, let us know! Is your event being cancelled? If yes, please let us know! insurance@etnational.com

If it is not listed accurately, it won't be covered!

All checks coming to National must be made out to: ETI or ETI Equestrian

January 25/Corral 103

Trail Ride, Mojave River Forks,
Presidents Ride Contact: Dawn Walker
(760) 961-7879

FEBRUARY 2026

February 7/Corral 12

Trail ride, Cheseboro Contact:
Patty Hug pattyhug@ca.rr.com

February 7/Corral 88

Trail Ride, Marshall Canyon Contact:
Noel Cook (951) 427-9343

February 14/Corral 15

Trail Ride, Black Rock Contact: Lexi Albin
(661) 338-8746 lexijanene@gmail.com

February 15/Corral 103

Trail Ride, Phelan Contact: Dawn
Walker (760) 961-7879

February 18/Corral 66

Trail ride, Rainbow Basin Contact: Jamie
Rees (760) 953-7235

February 19/Corral 83

Trail ride, PCT Rosamond Contact:
Susan Mustaffa (661) 538-0995

February 21/Corral 20

Bert Bonnett Memorial Birthday Ride,
Hansen Dam Contact: Deb Mader

February 21/Corral 22

Bert Bonnett & Doc Larsen Ride,
Ranger Park Trail Boss: Allan
Johnson Contact: Kathleen Smart
kathleensmart99@gmail.com

February 21/Corral 88

Dusty Spurs Gymkhana Contact:
Charles Sneed (760) 917-2673

MARCH 2026

March 7/Corral 88

Trail Ride - Lake Perris Contact: Noel
Cook (951) 427-9343

March 12/Corral 83

Trail ride, Cal City Contact: Susan
Mustaffa (661) 538-0995

March 14/Corral 12

Trail ride, Happy Camp Contact:
Patty Hug pattyhug@ca.rr.com

March 14/Corral 15

Trail Ride, Puma Canyon Contact: Lexi Albin
(661) 338-8746 lexijanene@gmail.com

March 18/Corral 66

Trail ride, Sawtooth Contact: Jamie Rees
(760) 953-7235

March 21- 22/Corral 22

Temecula Wine Ride, Temecula Valley
Trail Boss: Maria Kurtz Contact: Kathleen
Smart kathleensmart99@gmail.com

March 21/Corral 88

Dusty Spurs Gymkhana Contact:
Charles Sneed (760) 917-2673

March 22/Corral 103

Trail Ride, Turtle Mountain Contact:
Dawn Walker (760) 961-7879

March 25/Corral 83

Trail ride, Cache Creek Contact: TBD

APRIL 2026

April 4/Corral 15

Trail Ride & Easter egg hunt, Oro Grande
Contact: Lexi Albin (661) 338-8746
lexijanene@gmail.com

April 4/Corral 66

Playday, RJB Ranch Contact: Jamie Rees
(760) 953-7235

April 4/Corral 88

Trail Ride, Antelope Valley Poppies
Contact: Noel Cook (951) 427-9343

April 11/Corral 20

Membership Drive, East Valley Feed
Store, Sun Valley Contact: TBD

April 11/Corral 22

Trail ride, Vasquez Rocks/Maria Bonita's
Trail Boss: Sharon Richardson
Contact: Kathleen Smart
kathleensmart99@gmail.com

April 12/Corral 2

Trail ride, TBD Contact: Ann Regan
annregan@sbcglobal.net

April 12/Corral 12 & 22

Trail ride, Vasquez Contact:
Patty Hug pattyhug@ca.rr.com

April 15/Corral 83

Trail ride, Panorama Heights Contact:
Susan Mustaffa (661) 538-0995

April 18/Corral 20

RAIN DATE: April 25

8th Annual Terry Kaiser Memorial Trail
Trials, Lake View Terrace Contact: Becky
Borquez (818) 262-7764

April 18/Corral 37

Gymkhana, Thousand Oaks Contact:
Sharyn Henry redhatcowgirl@yahoo.com

April 18-19/Corral 88

Dusty Spurs Gymkhana 2 Day Buckle
Series Contact: Charles Sneed
(760) 917-2673

April 19/Corral 103

Trail Ride, Arrastre Falls Contact:
Dawn Walker (760) 961-7879

April 23/Corral 83

Poppy Ride Contact: Doris Lora
(661) 333-7797

MAY 2026

May 2/Corral 66

Lunch/Derby, RJB Ranch Contact: Jamie
Rees (760) 953-7235

May 2/Corral 88

Trail Ride, Wildwood Canyon Contact:
Noel Cook (951) 427-9343



Equestrian Trails Inc.

Coming Events Calendar

Corrals: Is your event listed below? If not, let us know! Is your event being cancelled? If yes, please let us know! insurance@etinternational.com

If it is not listed accurately, it won't be covered!

All checks coming to National must be made out to: ETI or ETI Equestrian

May 3/Corral 37

Ranch Horse Show, Thousand Oaks
Contact: Sharyn Henry
redhatcowgirl@yahoo.com

May 3/Corral 88

Obstacle Challenge #2 Contact:
Pam Garon (760) 917-2673

May 9/Corral 12

Trail ride, Malibu Creek Contact:
Patty Hug pattyhug@ca.rr.com

May 9/Corral 15

Trail Ride, Antelope Valley Poppy
Contact: Lexi Albin (661) 338-8746
lexijanene@gmail.com

May 9/Corral 22

Progressive Dinner Ride, Agua Dulce
Trail Boss: Craig Tognazzini-
Tentative Contact: Kathleen Smart
kathleensmart99@gmail.com

May 14/Corral 83

Trail ride, Glider Port Contact:
Monica Lindsey (661) 805-1244

May 16/Corral 20

Trail ride, Hansen Dam Contact: Nikki
Ahten (818) 489-6527

May 16/Corral 88

Dusty Spurs Gymkhana Contact:
Charles Sneed (760) 917-2673

May 18/Corral 37

Gymkhana, Thousand Oaks Contact:
Sharyn Henry redhatcowgirl@yahoo.com

May 22/Corral 83

Mulligan Ride Contact: Carol Knipp
(916) 337-2755

May 30/Corral 103

Trail Ride, Mojave Narrows Contact:
Dawn Walker (760) 961-7879

JUNE 2026

June 6/Corral 88

Trail Ride, Norco Contact: Noel Cook
(951) 427-9343

June 10/Corral 83

Buckeye Ride Contact: Susan
Mustaffa (661) 538-0995

June 11-14/National

Spring Ride, Chihuahua Valley Contact:
office@etinternational.com

June 13/Corral 15

Trail Ride, Idyllwild Contact: Lexi Albin
(661) 338-8746 lexijanene@gmail.com

June 14/Corral 37

Ranch Horse Show, Thousand Oaks
Contact: Sharyn Henry
redhatcowgirl@yahoo.com

June 20/Corral 37

Gymkhana, Thousand Oaks Contact:
Sharyn Henry redhatcowgirl@yahoo.com

June 20/Corral 83

Overnight Camp Out and Cub Lake Wine
Ride Contact: Kim Brandon (661) 714-6038

June 20/Corral 88

Dusty Spurs Gymkhana Contact:
Charles Sneed (760) 917-2673

June 20/Corral 103

Trail Ride, Puma Canyon Contact:

JULY 2026

Dawn Walker (760) 961-7879

July 4/Corral 15

Parade, Acton Contact: Lexi Albin (661)
338-8746 lexijanene@gmail.com

July 4/Corral 66

Parade, Newberry Springs Contact: Jamie
Rees (760) 953-7235

July 5/Corral 88

Trail Ride, Wrightwood Contact:
Noel Cook (951) 427-9343

July 11/Corral 12 & 22

Trail ride, Mt Pinos Contact: Patty Hug
pattyhug@ca.rr.com

July 18/Corral 20

"Beat the Heat" Trail Ride, Hansen Dam
Contact: Becky Borquez (818) 262-7764

July 18/Corral 37

Gymkhana, Thousand Oaks Contact:
Sharyn Henry redhatcowgirl@yahoo.com

July 18/Corral 88

Dusty Spurs Gymkhana Contact:
Charles Sneed (760) 917-2673

July 18/Corral 103

Trail Ride, Mojave Narrows Contact:
Dawn Walker (760) 961-7879

July 19-25/Corral 88

Camping, Montaña De Oro Contact:
Deborah Jasper (760) 508-3100

July 23/Corral 83

Trail ride, Tehachapi Nature Park
Contact: Liz Komin (661) 304-5720

July 23-26/Corral 15

Camping, Montaña de Oro Contact:
Lexi Albin (661) 338-8746
lexijanene@gmail.com

July 29/Corral 66

Moonlight Ride, Yoder's Little Yard Contact:
Jamie Rees (760) 953-7235

AUGUST 2026

August 1/Corral 88

Trail Ride, TBD Contact: Noel
Cook (951) 427-9343

August 8/Corral 103

Trail Ride, TBD Contact: Dawn
Walker (760) 961-7879

August 15/Corral 15

Poker Ride, Mojave Forks Contact:
Lexi Albin (661) 338-8746
lexijanene@gmail.com

August 15/Corral 37

Gymkhana, Thousand Oaks Contact:
Sharyn Henry redhatcowgirl@yahoo.com



Equestrian Trails Inc.

Coming Events Calendar

Corrals: Is your event listed below? If not, let us know! Is your event being cancelled? If yes, please let us know! insurance@etnational.com

If it is not listed accurately, it won't be covered!

All checks coming to National must be made out to: ETI or ETI Equestrian

August 15/Corral 88

Dusty Spurs Gymkhana Contact:
Charles Sneed (760) 917-2673

August 24-31/Corral 12, 20, 22

Camping, Moro Bay Contact:
Patty Hug pattyhug@ca.rr.com

August 29/Corral 66

Tack cleaning, lunch & mtg, RJB Ranch
Contact: Jamie Rees (760) 953-7235

August 29/Corral 88

Obstacle Challenge #3 Contact:
Pam Garon (760) 917-2673

SEPTEMBER 2026

September 5/Corral 88

Trail Ride, TBD Contact: Noel Cook
(951) 427-9343

September 12/Corral 12

Trail ride, Hansen Dam Contact:
Patty Hug pattyhug@ca.rr.com

September 12/Corral 15

Trail Ride, Vasquez Rocks Contact:
Lexi Albin (661) 338-8746
lexijanene@gmail.com

September 14-18/Corral 83

Camping, TBD Contact: TBD

September 19/Corral 20

Trail ride, Happy Camp (Moorpark)
Contact: Jeanne Mather

September 19/Corral 37

Gymkhana, Thousand Oaks Contact:
Sharyn Henry redhatcowgirl@yahoo.com

September 19/Corral 66

Trail ride, Yoder's Little Yard Contact: Jamie
Rees (760) 953-7235

September 19/Corral 88

Dusty Spurs Gymkhana Contact:
Charles Sneed (760) 917-2673

September 24/Corral 83

Trail ride, Bear Valley Ride Contact:
Susan Mustaffa (661) 538-0995

September 26/Corral 22

Moonlight Ride, Hideaway Trail Boss:
Allan Johnson Contact: Kathleen Smart
kathleensmart99@gmail.com

September 26/Corral 103

Trail Ride, Wildwood Canyon Contact:
Dawn Walker (760) 961-7879

September 27/Corral 37

Ranch Horse Show, Thousand Oaks
Contact: Sharyn Henry
redhatcowgirl@yahoo.com

OCTOBER 2026

October 3/Corral 15

Phelan Phun Day Parade, Phelan
Contact: Lexi Albin (661) 338-8746
lexijanene@gmail.com

October 3/Corral 88

Phelan Phun Days Parade Contact:
Deborah Jasper (760) 508-3100

October 4/Corral 12

Trail ride, TBD Contact: Patty Hug
pattyhug@ca.rr.com

October 8-11/Corral 22

Camping, Alabama Hills/Lone Pine Trail
Boss: Allan Johnson Contact: Kathleen
Smart kathleensmart99@gmail.com

October 11/Corral 2

Trail ride, TBD Contact: Ann Regan
annregan@sbcglobal.net

October 11/Corral 37

Ranch Horse Show, Thousand Oaks
Contact: Sharyn Henry
redhatcowgirl@yahoo.com

October 15/Corral 83

Trail ride & lunch, Sand Canyon Contact:
Monica Lindsey (661) 805-1244

October 16-18/Corral 15

Camping, Lake Perris Contact: Lexi Albin
(661) 338-8746 lexijanene@gmail.com

October 17/Corral 20

Trail ride, Vasquez Rocks ride, Agua Dulce
Contact: Nikki Ahten (818) 489-6527

October 17/Corral 37

Showdeo, Thousand Oaks Contact: Sharyn
Henry redhatcowgirl@yahoo.com

October 17/Corral 66

Charity Ride, Peggy Sue's Contact: Jamie
Rees (760) 953-7235

October 17/Corral 88

Dusty Spurs Gymkhana Contact: Charles
Sneed (760) 917-2673

October 18/Corral 103

Trail Ride, Juniper Flats Contact:
Dawn Walker (760) 961-7879

October 24/Corral 37

Gymkhana, Thousand Oaks Contact:
Sharyn Henry redhatcowgirl@yahoo.com

October 31/Corral 88

Obstacle Challenge #4 Contact:
Pam Garon (760) 917-2673

NOVEMBER 2026

November 7/Corral 88

Trail Ride, TBD Contact: Noel Cook
(951) 427-9343

November 7-8/Corral 22

Mulligan Stew Ride, TBD Trail Boss:
Allan Johnson Contact: Kathleen Smart
kathleensmart99@gmail.com

November 12/Corral 83

Trail ride, Placerita Nature Park Contact:
Kim Brandon (661) 714-6038

November 14/Corral 12

Trail ride, Sylmar Contact:
Patty Hug pattyhug@ca.rr.com



Equestrian Trails Inc.

Coming Events Calendar

Corrals: Is your event listed below? If not, let us know! Is your event being cancelled? If yes, please let us know! insurance@etnational.com

If it is not listed accurately, it won't be covered!

All checks coming to National must be made out to: ETI or ETI Equestrian

November 14/Corral 15

Poker Ride, Oro Grande Contact:
Lexi Albin (661) 338-8746
lexijanene@gmail.com

November 14/Corral 103

Trail Ride, Walnut Creek Contact:
Dawn Walker (760) 961-7879

November 21/Corral 66

Trail ride, Tonka Town Contact: Jamie
Rees (760) 953-7235

November 21/Corral 88

Dusty Spurs Gymkhana Contact:
Charles Sneed (760) 917-2673

November 28/Corral 88

Dusty Spurs - rain date Contact:
Charles Sneed (760) 917-2673

November 29/Corral 88

Obstacle Challenge #5 Contact:
Pam Garon (760) 917-2673

DECEMBER 2026

December 6/Corral 88

Trail Ride, Vazquez Rocks Contact:
Noel Cook (951) 427-9343

December 8/Corral 66

Christmas Party, RJB Ranch Contact:
Jamie Rees (760) 953-7235

December 10/Corral 83

Trail ride, Glider Port Contact:
Monica Lindsey (661) 805-1244

December 12/Corral 22

Christmas Party, Simi Valley Host: Tom
& Kat Smart Contact: Kathleen Smart
kathleensmart99@gmail.com

December TBD/National

ETI Christmas ride Contact:
office@etnational.com

NON ETI EVENTS

ELSA

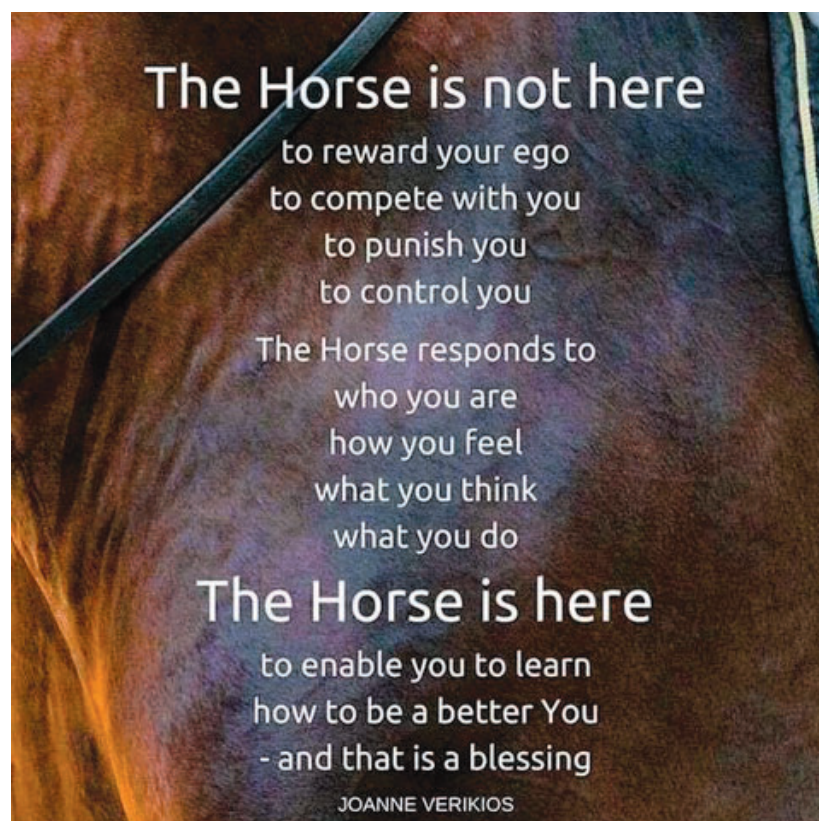
Experience.Learning.Support.w/Animals
Therapeutic riding program
(310) 403-966 www.elsainc.org

Head's Up Therapy on Horseback

Nancy (818) 848-0870
www.headsuptherapy.com

Ride On Therapeutic Horsemanship

program for disabled riders
(818) 700-2971 www.rideon.org





ETI NATIONAL Christmas Ride



WHEN: Sunday, December 14, 2025

**WHERE: Griffith Park, Los Angeles
(Martinez Arena)**

TIME: Arrive by 9:00AM; In saddle at 9:50AM

Directions: From I-5 north take the Western Avenue off-ramp and go west to Victory Blvd. Turn left on Victory and continue across Riverside Drive over the freeway to Zoo Drive. Turn right on Zoo Drive and continue to Martinez Arena and park.

**From the south on I-5, take the Glendale-Pasadena Freeway, exit at Zoo Drive and follow it to the parking area. Martinez Arena is a little beyond the Live Steamers.*

**From the Ventura Freeway (134) exit at Forest Lawn Drive and go west to Zoo Drive to arena entrance.*

***This will be a 3 hour ride with hills and lunch stop in the park with
delicious food served by our infamous Lunch Crew***

Cost is \$10.00 per person

Pre-pay and get a poker hand w/extra card and lunch for \$15.00

Reservations are a **MUST** by Thursday, December 11th. Mail check to:

EQUESTRIAN TRAILS, INC. | P.O. BOX 920668, SYLMAR, CA 91392 |

Text RSVP to 818-698-6200 **OR**

email rsvp and **Zelle** payment to:

OFFICE@ETINATIONAL.COM

*Releases **MUST** be completed before ride; A single event fee is
required if you are NOT an ETI member (\$10.00 Single / \$20.00 Family).*

Get festive and deck out your horse and yourself!

***Prizes awarded for:
Best Costume and More!***



\$5 poker hands





ETI's Annual Presidents & Membership Luncheon

Open to ALL ETI members!

Saturday, January 24
at 10am

New Hope Community Church
10438 Oro Vista Ave., Sunland

RSVP needed by
January 14 to
office@etinternational.com



Trail Rider Award Program

T. R. A. P.



It's TRAP! What is "TRAP" you ask?
TRAP is ETI's Trail Rider Award Program!



What does it do?
A heck of a lot more than it sounds!

If you have any questions about the TRAP Program, call TRAP Chairperson Carol Elliott, (760) 963-8209. All completed logs and CHECKS should be sent to Carol Elliott: 6990 Ord View Rd; Apple Valley Ca 92308. happy2appy@yahoo.com

All your TRAP dues of \$6.00 are due in January.

ETI TRAP keeps computerized logs on how many hours members are riding and where.

In this day and age, when trails are giving way to housing developments, it is crucial that records be kept on trail usage.

ETI Corrals in all areas are finding themselves having to defend their riding areas more and more against encroaching civilization. On several occasions, TRAP records have been instrumental in maintaining trail access.

When a Corral calls ETI TRAP and identifies a specific problem area, TRAP not only provides them with actual riding statistics of usage, but TRAP members are notified to increase usage and support in that particular area.

Documentation from 'trail logs' turned in by TRAP members are proof that trails are being used by equestrians.

ETI TRAP acknowledges hours in the saddle with shoulder patches and pins that can be attached almost anywhere.

Lest we offend the "cart" people, TRAP also counts those non-arena hours of driving time spent on the trails.

How much does all this cost? It's cheap!!! The fee to join TRAP is only \$12.00 (you must maintain current ETI membership); then the TRAP membership is maintained each year for only \$6.00.

You will start by receiving the TRAP main shoulder patch (about the size of a police patch), and your log sheets. As you hit the hour goals (100, 200, 500, etc.), additional patches will be sent to you. When you reach the higher levels, your hours will be acknowledged with pins instead of patches.

Why should the Show people get all the awards?



TRAIL RIDER AWARD Program application



Name _____ Corral # _____

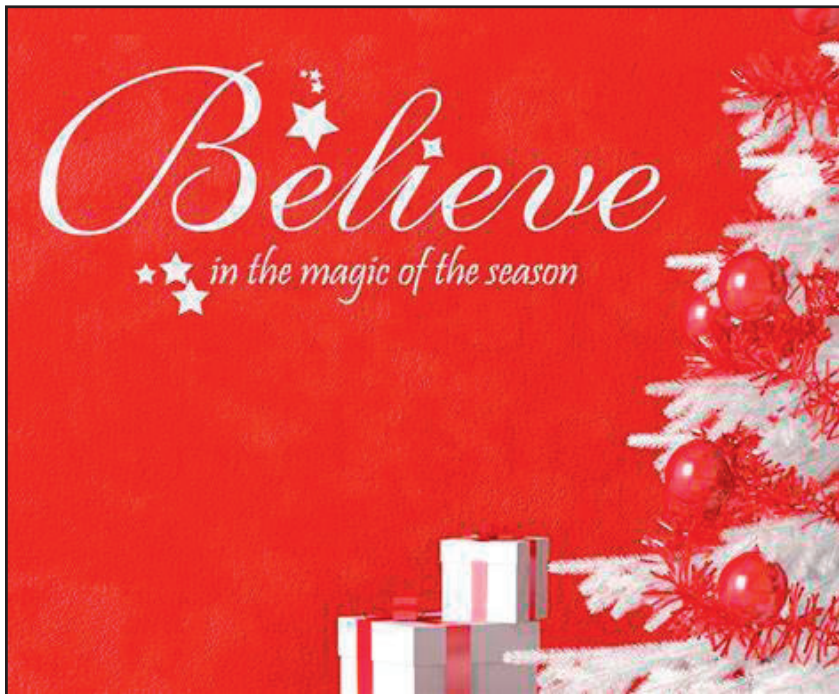
Address _____ City _____

State _____ Zip _____ Phone(_____) _____ Email _____

New \$12. _____ Renew \$6. _____ ALL DUE January 1 or NOW

Send with Check, Money Order or Credit Card info _____

NEW Mail to: Carol Elliott, ETI TRAP; 6990 Ord View Rd; Apple Valley CA, 92308



We all need encouragement and positive energy...especially these days. Each month, I'm going to send some positivity your way on this page. If you have a favorite saying, please share at magazine@etainational.com and I'll include the following month!!

Your Editor





Tasty Holiday Treat Recipes For Your Horse

Horse & Rider Updated: November 13, 2019; Original: October 30, 2009



If you're looking for an inexpensive gift for your horse, try one of these fab holiday horse treat recipes!

Peppermint-Stick Bran Mash

Ingredients:

- 1 cup crushed candy canes
- 3 to 5 cups bran
- 1 tablespoon salt
- 1 carrot, diced
- 1 carrot, diced
- 1/2 cup molasses
- 2 cups sweet feed

Give your horse the gift he loves this holiday season!

Dissolve crushed candy canes in 2 to 3 cups of boiling water and let water cool to warm. Then, mix all ingredients together except sweet feed in a

feed bucket. Add more warm water to make it soupy, rather than crumbly. Cover with towel and let stand until cool. Right before serving, spread a thin layer of sweet feed over the top and sprinkle on a crushed candy cane to garnish.

Thanks to Nicole Fritzler, Mich.

(From *The Ultimate Guide to Pampering Your Horse*, by June V. Evers; Horse Hollow Press, Inc., go to horsehollowpress.com to purchase)



Steamed Apple Pudding

Ingredients:

- 4 cups bran
- 2 apples, quartered
- Water
- Cinnamon

In a large pot, combine all ingredients with enough water to make a soupy mash. Simmer on low to medium heat until the apples are mushy. Remove from stove, cover and let cool. Serve warm. Sprinkle lightly with cinnamon.

(From *The Ultimate Guide to Pampering Your Horse*, by June V. Evers; Horse Hollow Press, Inc.)



Tasty Holiday Treat Recipes For Your Horse (cont.)

Horse & Rider Updated: November 13, 2019; Original: October 30, 2009

Apple & Carrot Pie

Ingredients:

Corn oil
Sugar
4 apples
4 carrots, diced
Cinnamon

Pour enough corn oil in the bottom of a pie pan to cover the bottom. Then, spread about 1/4 cup of sugar over the entire bottom. Slice apples horizontally in pieces about 1/2-inch thick. Lay them and the carrots down over the sugar. Pour a little more corn oil over the pie and sprinkle about 1/4 cup of sugar evenly over the entire top. Lightly sprinkle with cinnamon. Use a large serving spoon to serve equal portions to several horses.

Thanks to Kelly Carlson, Wis.

(From The Ultimate Guide to Pampering Your Horse, by June V. Evers; Horse Hollow Press, Inc.)



Applesauce Bundt Avec Corn Oil

Ingredients:

2 cups sweet feed
2 cups bran
1 cup molasses
1 cup apples, chopped
1/2 cup applesauce
1/2 cup corn oil
1-1/2 cups water

1 alfalfa cube, crushed

Preheat oven to 350 degrees. Grease a bundt cake pan and set aside.

Mix ingredients (except alfalfa cube) in a large bowl. Slowly add more or less water until mixture is a stiff consistency. Press mixture into a bundt cake pan and bake for one hour. When cooled completely, dribble an additional 1/2 cup of corn oil over the top and sprinkle on the crushed alfalfa cube for a garnish. Remove, let cool completely and serve to several horses.

Thanks to Tammy Goydich, N.Y.

(From The Ultimate Guide to Pampering Your Horse, by June V. Evers; Horse Hollow Press, Inc.)

Christmas Cake

Ingredients:

4 cups sweet feed
1 apple, chopped
1 cup raisins
1/2 cup molasses
2 eggs
Purple grapes
2 carrots, diced
Sugar cubes

Preheat oven to 350 degrees. Generously grease a cake pan and set aside.

Mix sweet feed, apple, raisins, molasses, and eggs together well. Press into cake pan and bake for one hour. Remove and let cool completely. Top with grapes, carrots, and sugar cubes.

Thanks to Edie Larson of Fox Haven Farm, Va., and The Complete Horse Tack Shop, Richmond, Va. (From The Ultimate Guide to Pampering Your Horse, by June V. Evers; Horse Hollow Press, Inc.)

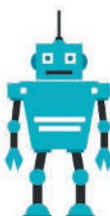




MERRY CHRISTMAS

Wordsearch

Search for the words going up, down, left and right.



YULETIDE
GREETINGS
CAROLING
PRESENTS

WREATH
NUTCRACKER
TREE
MISTLETOE

SANTA
GINGERBREAD
ORNAMENT
ELVES



womanofmanyroles.com





CORRAL NEWS

Corral 2

Pasadena/San Gabriel/Altadena

Pres. Ann Regan

(818) 321-6931



Corral 3

Walnut Creek

Pres. Cindi Schaub

(909) 354-1613



Corral 10

Lakeview Terrace

Pres. Pam Miller

(818) 262-2846



Corral 12

Sylmar Vista Del Valle

Pres. Patty Hug

(818) 367-2056



Corral 14

Western Wagons Mojave

Pres. Jeanette Hayhurst

(769) 953-8520



Corral 15

Desert Dusk Drifters

Pres. Marge Coulter

(760) 490-5048

ETI Corral 15 — Desert Dusk Drifters — launched its inaugural Poker Ride on November 2, and the day exceeded every hope: 39 riders hit the trail, and a total of 51 poker players joined the fun. From an on-time hooves-up to a clearly marked route and friendly card stops, the morning flowed into a relaxed lunch where new faces became friends and longtime riders swapped stories. Volunteers kept everything running smoothly, the food was a hit, and the feedback was unanimous — great course, great



company, and the kind of camaraderie that makes ETI special. As a brand-new corral, we're grateful for the warm welcome from the ETI family and already mapping more rides and community events as we ride



toward a strong 2026.



Kimberly Cannoles

Corral 20

Shadow Hills Rough Riders

Pres. Cheri Ovayan

(818) 335-2884



Corral 22

Intervalley Trail Riders

Pres. Kathleen Smart

(626) 590-6792

www.corral22.com



We had a beautiful warm day for the Mulligan Stew ride..in the 80's with a light breeze. Ten riders set out from Ranger Park and headed up the Doc Larsen Trail to the water trough



before making their way back. Bailey got a little overheated with his thick winter coat but bounced back once cooled down. Back at camp, Billie had stew, salad and garlic bread ready for us. A special thank you to Allan Johnson for leading the ride and to Billie McGuire for cooking the delicious Mulligan stew!



For more information, please check us out at www.corral22.com!

Kathleen Smart

Corral 35

Oak Canyon Riding Club
Glendora
Pres. Dottie Hilliard
(626) 335-7112



Members of Corral 35 will be donning their Christmas finery on Saturday, December 13, to strut their stuff in the Annual Glendora Christmas Parade which steps off at 9am sharp. When we refer to finery, in this case, we mean "festive riding attire". Members "deck" the tails and manes with jingle bells, poinsettias, buttons and bows, and other décor in keeping with the season. All members are invited to ride, pony, or hand walk their horses or ponies, and dogs.

If you are not a member and would like to join us, we welcome you. Our hope is that you will consider joining our corral and help support horses in our local communities.

Folks who would rather walk the route in support of the Corral, are also welcome to join our entry. My advice, is that if you are walking, don't wear your "dress up and go to town" boots. Our staging area is on the corner of Glendora Avenue and Bennett Street next to the Church. Contact Dottie Hilliard for more information at (626) 483-4384 or equidot@aol.com.

Corral 35 would like to extend an invitation to members of neighboring Corrals to join us in this "low key Home Town" type of Parade. It is always a pleasure to have Corral 3 join us, and it would be fun to welcome some new comers, as well. How about our friends at San Dimas Sheriff Mounted Posse Group 8, MAU members, and ETI Members at Large? The more the merrier. Bring a friend.

With the fun and excitement of the parade, comes warm holiday wishes from Corral 35 to all our fellow horse loving friends. Those who celebrate Christmas, are reminded that He, whose birthday we celebrate, was born in a stable. Perhaps that is why we find comfort in the time we spend at "the barn". Whatever your faith, celebrate the love of your fellow man. Merry Christmas and Happy Holidays from our Corral or Barn to yours!!

Dottie Hilliard, Petite Sera' and Rudy



Corral 37

Conejo Riders
Thousand Oaks
Pres. Sharyn Henry
(805) 795-6493
www.eticorral37.org



Corral 38

Griffith Park Equestrians
Burbank/Glendale
Pres. Diana Hoch
(818) 841-6422
www.corral38eti.com



Corral 43

Tri Valley Riders
Nuevo/Riverside/Norco/Hemet
Pres. Leslie Jones
(310) 714-6877



Corral 54

Rocky Hill Riders
Chatsworth
Pres. Carey Wendler
careywendler@yahoo.com



Corral 66

Route 66 Riders
Barstow/Newberry Springs
Pres. Jamie Rees
(760) 953-7235



The weather did not cooperate last weekend, so we had to cancel our ride. A few of us met at Eddie World for lunch and to catch up.

Our next event is December 9 at the Bredelis ranch. Arrive around 5pm, and we eat at 6pm. Please bring your favorite dish to share. For more information, contact Jamie Rees at (760) 953-7235.

Jamie Rees
President, Corral 66

Corral 83

Tehachapi Mountain Riders
Tehachapi
Pres. Carolyn McIntyre
(661) 972-2337



And just like that December is upon us. It's hard to believe how quickly 2025 has come and gone, as we are about to make way for 2026. Most of the Corrals are getting ready for their annual Christmas gatherings where fun times and



good food will be shared. But before I jump into December events and future rides planned for Corral 83, I'll share what November events happened in the mountains.

November 4, Kim Brandon and Liz Komin went to Vasquez Rocks, Los Angeles County Parks. They met up with Kimberly Dwight of Corral 138 and another rider for a nice ride in the park. Liz Komin had never been to Vasquez rocks and really enjoyed the ride. The weather was perfect.



A few days later, on November 8, Susan Mustaffa led a wine ride in Cummings Valley the Tehachapi Wine country. Before stopping for lunch

at the Tehachapi Wine and Cattle Company, riders rode around the Fairview Ranches neighborhood adjacent to the winery. Geographically, Fairview Ranches sits between Bear Valley Springs and Stallion Springs, all three of which are equestrian communities and contain most of our mountain riding trails. Tehachapi Mountain Park has a trail and some fire roads for riding. Golden Hills has a former golf course now converted into a nature park. Further east in the Tehachapi Valley, Corral 83 members have started riding in the vicinity of the glider port and then much further east Sand Canyon. Once winter sets in, the mountain trails close and riders head to the desert for warmer temperatures and flat, dry trails.



November 20, we had a ride on the schedule for California City, one of our winter haven locations. A deluge of rain happened in Southern California, record breaking rains in some areas of Kern County. The ride was rescheduled for December 4.

On November 12, Liz Komin hosted the 2026 ride planning meeting in her lovely mountain home. Thank you, Liz, for hosting the meeting.

Our upcoming December events include the annual Corral 83 Christmas party and gift exchange which will take place at the Bear Valley Springs equestrian center clubhouse... Tuesday, December 2, at 5 pm. Need to call a BVS resident for a pass.

Our December ride is a ride rescheduled from November. Susan Mustaffa leading the California City ride on December 4.

Doris Lora

2019 "What Do I Do with My Horse, Cat, Dog, Child, Gerbil in Fire, Flood, and/or Earthquake?"

Are your animals MICROCHIPPED? FIRE SEASON never disappears here in Southern California! MICROCHIPS - A 'must have item' if you must evacuate your property, and you want to get your animal(s) safely back home again. So easy to get through your veterinarian.

Hopefully you still have your copy of this booklet! If you cannot find your copy, you may download this booklet FREE at www.etinational.com, look for Forms & Documents. For information, contact Stephanie Abronson (818) 222 PONY; Stephanie@abronson.com.

ALWAYS BE PREPARED FOR FIRES!

THIS SEASON -- When you drive past the Fire Dept. Forestry Unit on Las Virgenes Rd. and notice that the warning sign says "HIGH FIRE DANGER", take special notice!! We are at risk! Our children are at risk! Our animals are at risk! Our homes are at risk! BE PREPARED!! Get out your copy of: "What Do I Do with My Horse, Cat, Dog, Child, Gerbil in Fire, Flood, and/or Earthquake?"



Every inch of this booklet is helpful whether you own a horse or not.



Corral 86

Vasquez Vaqueros
Agua Dulce/Canyon Country/Acton
Pres. Janette Beas
(858) 692-6836



Corral 118

Simi Valley
Pres. Dean Wageman
(323) 816-1683
www.eti118.com



Corral 88

Tri Community Horsemen
Phelan/Pinon Hills/Wrightwood
Pres. Noel Cook
(951) 427-9243



Corral 138

Barrel Springs Rider
Antelope Valley/Palmdale
Pres. Kimberly Dwight
(661) 478-2770



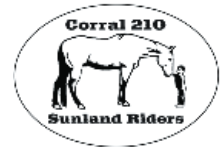
Corral 101

Route 101 Horse Show Circuit
Lake View Terrace
Pres. Dawn Surprenant
(661) 433-9069
www.route101horshow.com



Corral 210

Sunland Riders
Sunland/Gibson Ranch
Pres. Jeanette Provolt
(818) 472-6537



Corral 103

Hesperia Happy Horsemen
Hesperia/Apple Valley
Pres. Dawn Walker
(760) 961-7879



The name of Friend is common, but a true friend is rare. Cicero's

It's never too late to be who you might have been. George Eliot

Character is doing what's right when nobody's looking. J.C. Watts, Jr.



Your Equine Disaster Kit

- ☐ Leads, Halters, Shanks
- ☐ 3 Day Supply of Feed/Meds
- ☐ Buckets for Feed/Water
- ☐ Contact List/ ID Photos
- ☐ Portable Radio with Batteries
- ☐ Flashlights
- ☐ 1st Aid Kit
- ☐ Leg Wraps
- ☐ Blanket or Sheet
- ☐ Hoof Pick
- ☐ Tarps
- ☐ Shovel
- ☐ Sharp Knife
- ☐ Wire Cutters
- ☐ Water Hose
- ☐ Duct Tape

Take the time to Develop an Emergency Plan Today!

Horse owners are much more likely to evacuate early when they have:

- 1) An Emergency Plan
- 2) Available supplies
- 3) A pre-arranged destination where they feel familiar & comfortable.

Emergency Contact Numbers

Your Local Animal Control

Your Veterinarian

Your Sheltering Site

Your Family and Out-Of-Area Contacts

Would you like more information?
A FREE comprehensive emergency response booklet is only a mouse-click away!

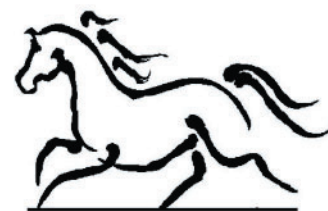
"What Do I Do With My Horse in a Fire, Flood and/or Earthquake?"
www.etinational.com/
(click on "Docs & Forms" link)



Los Angeles County Department
of Animal Care and Control



Are You and Your Horses Prepared for an Emergency Event?



LACDACCERT

YOU ARE THE ONLY ONE WHO CAN PLAN TO KEEP YOUR HORSES SAFE!

10 Things You Can Do NOW To Prepare Your Horses for an Emergency Event

Living and owning horses in Southern California has its special challenges, particularly where emergency preparedness is concerned. It is every horse owner's responsibility to have an Emergency Plan in place. This includes making arrangements to evacuate or preparing an area where horses can remain safe during an emergency event.

EVACUATE EARLY! It is vital for horses to be evacuated early from threatened areas so horse trailers do not interfere with emergency response vehicles.

If Your Horse is Not Trained to load into a trailer, or will not load easily or safely, you must work in advance to make your horses' area as safe as possible to Shelter in Place. Check with the Fire Department for clearance regulations.

BETTER YET -

Train Your Horses To Trailer, and have a working trailer available during fire season!

DO NOT TURN YOUR HORSES LOOSE!!

Although your instinct may be to let your animals loose in the event of a wildland fire, your animals are safer in their corrals.

Loose horses can pose a life threatening danger to themselves, the public and to emergency responders.

1. Plan NOW for Emergency Sheltering for Your Horses. Many designated sheltering sites may become overcrowded. Make plans now to house your horses with friends, at a commercial stable or other suitable sites out of the danger area. Discuss your plans with everyone in your family and keep the address and driving directions in your emergency kit.

2. Become Involved With (or Start) A Neighborhood Network. During a disaster we will all need to help each other. Neighbors can work together to help the horse owners on their street who do not have a horse trailer.

3. Make A List of Emergency Contacts



Use the space provided on this brochure, use several and keep copies in your car or trailer as well as in your house.

4. Take Photographs and prepare a written description of each horse. Put one set in a safe place and another set in your emergency kit.

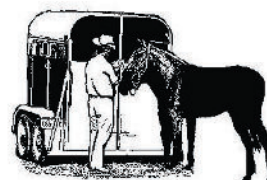
5. Have a Halter & Rope for Each Horse. Make sure halters are marked/engraved with your contact information or you can write the information on a piece of duct tape and stick it on the halter. If your horse has medical issues or special needs, record this information on a luggage tag and attach it to the halter.

6. Microchip your horses. This is an easy, inexpensive way to help identify all of your animals.

7. Have a 3 Day Supply of Feed and Water (per Horse) This is particularly important if you plan to shelter in place, but you should also bring feed (and buckets!) if you evacuate. Make sure to include any medications your horse may need. Label ALL of your equipment.

8. Teach Your Horses How to Trailer. Spend time loading and unloading your horses so they are safe and willing to load.

9. Keep Trucks, Trailers & Vans Well-Maintained and Ready to Move. Keep your gas tank full, particularly during Red Flag Warning days. Continue working with your horses until you are confident they will load.



10. Make a Disaster Preparedness Kit. Store non-perishable supplies in a portable container such as a clean trash can, bucket or canvas duffle bag.



WAIVER & RELEASE FOR EQUESTRIAN TRAILS, INC., ACTIVITIES

This Is A Waiver of Your Legal Rights, And An Agreement Not To Sue
Serious Injury Or Death May Result From Riding Or Being Near Horses

ETI Event _____ Location _____ Date _____

1. Participant's Name (print): _____

Address: _____ City: _____ State: _____ Zip _____

Telephone: (____) _____ Email: _____ ETI Member ____ If Yes, Corral #: _____

2. **Liability Release.**

In consideration for Equestrian Trails, Inc. ("ETI") allowing me or my child to voluntarily participate in its activities, I agree as follows:

- a. This agreement, waiver and release applies to ETI and to ETI's affiliated Corrals, committees, employees, predecessors, successors, attorneys, insurers, members and volunteers who are working in the course and scope of their duties on behalf of ETI, including its affiliated Corrals, at the time of occurrence of any act or omission which is later alleged to be a cause or contribution to a claim for injury, damages or death ("Released Parties");
- b. I forever release, hold harmless and indemnify Released Parties from liability for any and all claims, demands, causes of action, damages, injuries or death to me, my minor children, my horse and my property, and legal liability of every nature, including the negligent acts or omissions of any Released Parties, whether known or unknown, anticipated or unanticipated, direct or indirect, arising out of participation in the past, present or future ETI activities (including equestrian activities, such as the riding, use of, or being near, horses, whether at an arena, stable or on a trail ride in association with ETI) and I assume all risks of injury or death as set forth in this release;
- c. I shall not bring any lawsuit, action or proceeding against any Released Parties, even if they engage in negligent conduct; and
- d. I make this agreement, waiver and release for and on behalf of myself, my spouse, my child and/or ward, heirs, administrators, successors, representatives and assigns.

3. **Activity Risk.**

I understand that some ETI activities take place in isolated or wilderness areas over rough terrain, and/or trails of unknown condition and others take place on land or in facilities owned and managed by others from whom such land or facilities are borrowed or rented. I understand that the organizers, workers and members involved in ETI activities are not professionals in the horse industry, or in the planning or conducting of trips or camping events, or in other areas of expertise involved in ETI activities. I also understand that horseback riding is a rugged adventure, recreational sport activity. I am aware that there are numerous obvious and non-obvious inherent risks of serious injury or death, or property damage, to me or my horse, which are always present in ETI activities, on or near horses. I understand that pregnant women are specifically advised not to ride horses. I understand that ETI is a non-profit club of private individuals who have come together to support and enjoy recreation-oriented activities.

4. **Nature of Horses.**

I understand that no horse is completely safe, and the Released Parties make no representations or guarantees regarding the safety, training or suitability of any horse. Horses are 5 to 15 times larger, 20 to 40 times more powerful, and 3 to 4 times faster than a human. If I fall from a horse to the ground, it will generally be at a distance of 4 to 6 feet, and the impact will injure me. A horse may divert from its training and act according to its natural survival instincts and may abruptly change directions or speed, trip, slip, fall, stop short, shift its weight, buck, rear, kick, bite, spook, or run from what it perceives to be danger if it is frightened or provoked, or for no reason whatsoever.

5. **Conditions of Nature & Locations.**

I agree that the Released Parties are not responsible for acts, occurrences or elements of nature or a particular location that can injure a person or scare a horse, cause it to trip, fall or react in some other manner. These elements include thunder, lightning, rain, wind, wild and domestic animals, insects, other people and horses, and reptiles which may walk, run, fly near, bite and/or sting a horse or person, irregular footing on groomed or wild land which is subject to constant change according to weather, temperature, natural and manmade



objects. The Released Parties have not inspected, and make no representations or warranties concerning the safety or condition of, any trail, camping site, arena and/or other location of ETI events.

6. Helmet Warning.

I am aware that protective head gear which meets or exceeds the quality standards of the SEI certified and ASTM standard F1163 equestrian helmet, should be purchased and worn by me and/or my child while riding and being near horses, and the wearing of such helmet may reduce the severity of some head injuries and may prevent my serious injury or death as a result of a fall or other occurrence. If I or my minor child do not wear a helmet, it is because we so choose.

I HAVE READ, UNDERSTOOD AND VOLUNTARILY AGREE TO THIS TWO-PAGE WAIVER & RELEASE. I FURTHER AGREE THAT NO ORAL STATEMENTS, REPRESENTATIONS OR INDUCEMENTS APART FROM THIS WRITTEN AGREEMENT HAVE BEEN MADE TO ME TO OBTAIN MY CONSENT.

Dated: _____ Participant's Signature: _____

(Printed Name)

IF PARTICIPANT IS UNDER 18, SIGNATURE OF AGREEMENT BY PARENT OR LEGAL GUARDIAN IS ALSO REQUIRED, AND SUCH PERSON FURTHER AGREES, PURSUANT TO PARAGRAPH 2, ABOVE, TO RELEASE AND INDEMNIFY THE RELEASED PARTIES FOR ANY INJURY OR DEATH TO, OR ANY CLAIM BY OR ON BEHALF OF, SUCH MINOR:

Minor's Birth Date: _____

Dated: _____ Signature: _____

Relationship to Minor: _____

(Printed Name of Signor)

ETI Witness (print name): _____ Corral # _____

Description of Event Where Signed: _____



**Give the gift that gives all year long...
An ETI Membership!**



**Contact the ETI Office for more
information at (818) 698-6200 or
Join online at
www.etinational.com**

Display Your Equestrian Pride!

Contact the ETI office for Stickers
at (818) 698-6200 or
office@etinational.com



ETI Bell logo
Small 3" x 4" for inside
vehicle window \$3.00

8" X 10" for gate or
trailer \$6.00

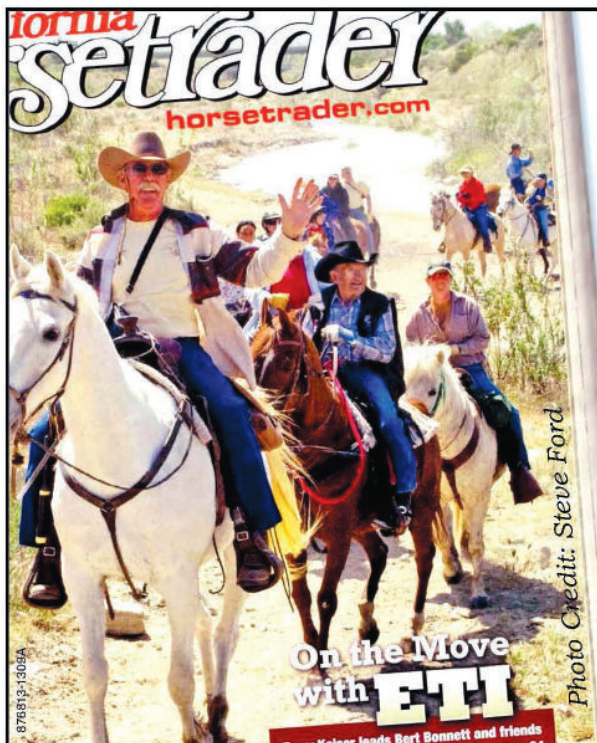


got trails?

Got Trails?
Stickers \$5.00
Available in White
or Black



United We Ride \$3.00



**California
Horsetrader**
horsetrader.com

**A Better Breed
of Advertising™**

In print. Online. Socially networked.

Be sure to read your ETI newsletter each
month in **California Horsetrader**, and online
at **horsetrader.com!** (Just click on "Read Digital
Edition" at the top of the home page)

**If you have anything equestrian you'd like to sell or market,
call us and ask about our "ETI Member discount"!**

Proud sponsors of Equestrian Trails, Inc.

760-546-1184

**Non-ETI
Size**

Full Page	\$140
1/2 Page	\$75
1/4 Page	\$50
Business Card	\$25
Classified (3 lines)	\$10

**Corrals
Size**

Full Page	\$75
1/2 Page	\$40
1/4 Page	\$27
Business Card	N/A
Classified (3 lines)	\$7

**ETI Members
Size**

Full Page	\$100
1/2 Page	\$65
1/4 Page	\$45
Business Card	\$15
Classified (3 lines)	\$7

Special discount rates for Full and 1/2 page with 12 month contract (4 printed issues & digital issues). Payment in full required.

All insertion rates are costs PER ISSUE and are due at time AD is submitted (unless a contract is signed for the 3X or annual rate).

Ad rates are for camera-ready artwork. Any setup will be charged at \$35 per page, 1/2 tone of pictures are \$10 each. Commercial advertisers, use 85 line-screen.

Please submit by email at magazine@etinational.com

We are publishing ONLINE every month.

Checklist For Membership Application Cards

Be sure to use the standard cards and not paper forms. If you need more cards please let us know.

Please Check Cards For Completeness And Legibility.

Oftentimes the information on the cards is hard to read. Membership fees are due on the member's anniversary date. Please notify members a month in advance of their anniversary date and send them a Membership Application card to complete and return to your Corral. If they renew late, 90 days or more, their anniversary date will change. Anyone who does not have current membership must pay single event fees at events.

Send cards in A.S.A.P. **Don't hold them.** For **Single** membership, list only the person applying for membership and no one else.

All ETI rides and events require that participants complete both sides of the ETI Waiver and Release.

Non members must complete a Single Event form and pay \$10.00 for an individual for the day or weekend-camping membership. \$5.00 of this is to be sent with the forms back to the ETI office. A family membership for the event is \$20.00; \$10.00 goes to the ETI office.

The Waivers/Release as well as Single Event forms need to be received at the ETI office within two weeks of event.

Basic membership amounts are Family \$50; Senior \$35; Junior \$30.

At Large Memberships are Family \$70; Senior \$50; Junior \$45.

Some Corrals charge additional amounts.

Please contact a Corral or send to ETI, P.O. Box 920668, Slymar, CA 91392

ETI MEMBERSHIP APPLICATION

Name (last): _____ First _____ Corral _____ *

Mailing Address: _____ Spouse: _____

City: _____ State: _____ Zip: _____

Phone: _____ Occupation: _____

Email Address: _____

_____ Junior (under 18) Birthdate _____ Dues Paid _____

_____ Adult (over 18) Dues Paid _____

_____ Family Sr " _____ Jr. # _____ Dues Paid _____

New _____ Renew _____ or Changing from Corral # _____ to Corral # _____

Signature: _____ Date: _____

Parent's signature if Junior only membership-under 18

* CHECK ☐ Please send me information for a Corral in my area. ETI (818) 698-6200

ETI National Programs

Horse Shows ETI has a National High Point Circuit which is currently on hiatus. Until then, please contact the ETI office. Non-ETI members can participate in our ETI High Point Shows. But to be a part of the National High Point Circuit you must be an ETI member. You can sign up for the Circuit any time during the season, but must compete a specified number of times in your chosen classes to win awards. Points towards year end awards start accumulating on the date you sign up with the high point program.



The **Junior Ambassador Program** is open to all ETI youth age 7 to 21. Boys are welcome for the Prince and King category. Applications for the program may be obtained by contacting Cheri Ovayan at (818) 335-2884 covayan97@icloud.com. The completed forms are due back by April 2nd with all fees, sponsors, autobiography and pictures. This is a great way for our youth to represent their Corral and ETI. Participants volunteer their time at several mandatory events as well as many horse shows; trail trials, parades, trail dedications, quarterly dinner meetings and fun events just for the Junior Ambassador Court such as the retreat! Contact Michelle or any of the girls who have participated for more info on the fun activities.



Trail Rider Award Program (TRAP) keeps computerized logs on how many hours members are riding. In this day and age, when trails are giving way to housing developments, it is crucial that records be kept on trail usage. ETI Corrals in all areas are finding themselves having to defend their



riding areas more and more against encroaching civilization. On several occasions, TRAP records have been instrumental in maintaining trail access.

ETI TRAP acknowledges hours in the saddle with shoulder patches & pins that can be attached almost anywhere. The fee to join TRAP is only \$12.00 (you must maintain current ETI membership); then the TRAP membership is maintained each year for only \$6.00. You will start by receiving the TRAP main shoulder patch and your log sheets. As you achieve the hour goals additional patches will be sent to you. Carol Elliott is the TRAP chair. Please contact (760) 963-8209 or happy2appy@yahoo.com.

Trail Trials: An ETI Sanctioned Trail Trial consists of a trail ride, usually averaging between two and three hours, with trail obstacles along the way. Obstacles are natural, or simulate naturally occurring conditions for the horse and rider to negotiate. We now have a DVD from a clinic demonstrating obstacles and tips to compete or put on a Trail Trial. It is important to remember that the people doing the judging at sanctioned Trail Trial event are volunteers following the rulebook and are doing thwe best they can. Safety, control, and common sense are the number one priorities for all ETI sanctioned Trail Trials. Trail Trials are open to ETI members and Non-members. There are three divisions: Juniors for youth 14 years (as of Jan. 1st) and under; Novice and Open. Please contact the ETI office at (818) 698-6200 office@etinational.com.

