



Equestrian Trails, Inc.

Official Publication of Equestrian Trails, Inc.
Serving equestrians since 1944

Volume 26, Issue 4

April 2026

Trail Trial Time! Pg 11



Rattlesnake Avoidance!!! Pg 13

Dedicated to Equine Legislation, Good Horsemanship, and the Acquisition and Preservation of Trails, Open Space and Public Lands

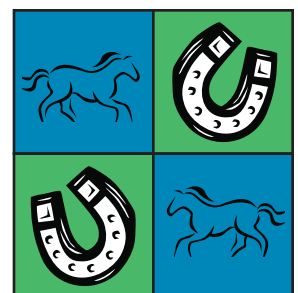
Inside this issue:

2026 Spring Ride	12
SNAKE! What To Do Next	14
Blast From The Past - April 2022	15
20 Tips To Enjoy Spring With Your Horse	16
Positivity Corner	18
Corral News	19
TRAP	27
Waiver	28

Upcoming Events

High Point Shows
Gymkhanas
Trail Trials & Rides

See pages 5 - 10



ETI Contact Info

EXECUTIVE BOARD

PRESIDENT: **Tom Kirsch**
tkirsch98@gmail.com (951) 733-8746

1st VICE PRESIDENT: **Nikki Ahten**
(818) 489-6527 nmahten@gmail.com

2nd VICE PRESIDENT: **VACANT**

IMMEDIATE PAST PRESIDENT: **Linda Fullerton**
Linda@lindafullerton.com (818) 612-3305

BOARD OF DIRECTORS

NATIONAL TRAIL COORDINATOR: **Liz Radley**
ranchohorses@gmail.com

AREA TRAIL COORDINATOR: **Elaine Macdonald**
emac43031@gmail.com
(661) 946-1976

AREA DIRECTORS

Area 3 (Corrals: 2, 3, 35) **Dottie Hilliard**
equidot@aol.com (626) 335-7112

Area 4 (Corrals: 66, 103) **VACANT**

Area 5 (Corrals: 14, 65, 83) **Patty Hug**
pattyhug@ca.rr.com (818) 367-2056

Area 6 (Corrals: 22, 36, 54) **VACANT**

Area 7 (Corrals: 10, 12, 20, 38, 101, 210)
Becky Borquez beckyborquez1@gmail.com
(818) 262-7764

Area 8 (Corrals: 37, 118) **VACANT**

Area 9 (Corrals: 43) **VACANT**

Area 11 (Corrals: 15, 86, 88, 138) **Michael Fahnestock**
MrMichael0007@gmail.com
(818)635-6180

Area 12 (Corrals: 357) **VACANT**

Area 13 (At-large members) **VACANT**



Equestrian Trails, Inc.

www.etinational.com

P.O. Box 920668
Sylmar, CA 91392
Phone: (818) 698-6200
Phone Hours: 9:00 am—4:00 pm

Patty Hug - Membership
Sarah Williams - Magazine, Website
Nikki Ahten - Insurance & Facebook

Convention: convention@etinational.com
High Point: highpoint@etinational.com
Insurance: insurance@etinational.com
Magazine: magazine@etinational.com
Membership: membership@etinational.com
Office: office@etinational.com
President's Office: president@etinational.com
Website: webmaster@etinational.com



Contents

- 4 Never Miss An Issue Again! Subscribe!
- 5 Coming Events Calendar
- 11 Corral 20 8th Annual Terry Kaiser Trail Trial
- 12 2026 Spring Ride Application
- 13 Corral 35 Rattlesnake Avoidance Training
- 14 SNAKE! What To Do Next
- 15 Blast From The Past: April 2022
- 16 20 Tips To Enjoy Spring With Your Horse
- 18 Positivity Corner
- 19 Corral News
- 27 TRAP
- 28 Updated ETI Waiver and Release
- 31 Announcements
- 32 ETI National Programs





A Message from Tom Kirsch ETI National President

Hello to all:

The ETI National Board meeting was held on 3/16/2026 via phone conference. I was unable to call in, but I can tell you we are starting to recover from paying our insurance bill. The corrals are starting to pay their insurance bills which will help us recover financially. Our membership is holding steady and will hopefully grow as the show season starts.



Wow, talk about wild weather...heavy rain storms to 100 degree heat in March!! I feel sorry for the animals. They don't know what do. It's awful early to start shedding out. Hopefully, we will get some more winter weather.

The corrals are busy with their events and Spring Break for the students. Remember to read the magazine and come out and support the corrals...not just your own, but the other corrals, also. We have to support each other and show the powers that be that the equestrian community is not going anywhere!!!

The next National event will be the Spring Ride, June 11-14, to be held at Chihuahua Valley Horse Camp, Warner Springs. This is a great horse camp with great trails and wonderful owners. The application is in the magazine and on our website and Facebook page. Come join us for a great ride. It's great way to start your summer.

Be safe and look out for each other!

Tom



Corral 88's Gymkhana
Lil Spurs High point
winner Alexis Boyd
photo submitted by
Lily, Corral 88.

National Board Meeting

Next meeting will
April 20 at 7pm

Monthly meeting is via
conference call. If interested in
joining the call, email us at
office@etinational.com

Join us!

ETI SPECIAL EVENTS CHAIRPERSONS

2026 SPRING RIDE (June 11-14): Nikki Ahten nmahten@gmail.com & Tom Kirsch tkirsch98@gmail.com

ETI TRAIL RIDER AWARD PROGRAM (TRAP): Carol Elliott (760) 963-8209 happy2appy@yahoo.com



Never Miss An Issue Again!!!

Just go to etinational.com and scroll down to the magazines.

Fill out the form and hit SUBSCRIBE!!

Sign up for our magazine here...

Fill in the form below to receive ETI National online magazine as well as event information for ETI rides, trail obstacle events, trail trials, gymkhana, horse shows and play days.

Subscribe to ETI National Magazine!

Find the Special Content that comes with a Digital Magazine!

If you're reading this online, look for active links and surprise "easter eggs"!



When you see these, click for a link.



When you see this symbol, click for a surprise!



Equestrian Trails Inc.

Coming Events Calendar

Corrals: Is your event listed below? If not, let us know! Is your event being cancelled? If yes, please let us know! insurance@etinational.com

If it is not listed accurately, it won't be covered!

All checks coming to National must be made out to: ETI or ETI Equestrian

NATIONAL CONTACTS

www.etinational.com
(818) 698-6200
P.O. Box 920668, Sylmar, CA 91392

Email addresses:

convention@etinational.com
highpoint@etinational.com
insurance@etinational.com
magazine@etinational.com
membership@etinational.com
office@etinational.com
president@etinational.com
webmaster@etinational.com

NATIONAL 2026

June 11-14/National
Spring Ride, Chihuahua Valley Contact:
office@etinational.com

December 12/National
ETI Christmas ride Contact:
office@etinational.com

2026 Individual Corral Circuit Shows/Series

Corral 37/Thousand Oaks
Ranch Horse - 4 shows; May – November
Contact: Sharyn Henry
redhatcowgirl@yahoo.com

May 3
June 14
September 27
October 11

Corral 101/Hansen Dam Equestrian Center
5 show series - March - October
Contact: Kim Estrada (818) 497-4730
rockbacknzip@aol.com

April 11-12
May 30-31
September 12-13
October 17-18

GYMKHANAS/PLAYDAYS

Corral 37/Thousand Oaks

7 gymkhanas; April – October
Contact: Sharyn Henry
redhatcowgirl@yahoo.com

Corral 43/Tri-Valley Riders

9 Gymkhana series Contact: Stefany Grainger (909) 917-6163

Corral 88/Dusty Spurs

Gymkhana series; February - November
Phelan Contact: Leslie Davis (760) 662-1732 eticorral88@gmail.com

Corral 210

Monthly play days fourth Sunday of each month, Gibson Ranch, Sunland
Contact: Jeanette Provolt (818) 472-6537
countrysatheart.jp@verizon.net

2026 ETI Trail Rides, Drives, Events

When a Corral plans a ride at Vasquez Rocks, as a courtesy, please call the Rangers (661) 268-0840



APRIL 2026

April 4/Corral 66

Playday, RJB Ranch Contact:
Jamie Rees (760) 953-7235

April 4/Corral 88

Trail Ride, Antelope Valley Poppies
Contact: Noel Cook (951) 427-9343

April 5/Corral 38

Easter Play Day, Easter Field Contact: Liz Radley liz@lizradley.com

April 7/Corral 10

RAIN DATE: 3/28
Obstacle Event, Mitchell Ranch Contact:
Gabrielle Dagan-Winstead (818) 899-6702
eticorral10@yahoo.com

April 11/Corral 20

Membership Drive, East Valley Feed Store, Sun Valley Contact: TBD

April 11/Corral 22

Trail ride, Vasquez Rocks/Maria Bonita's Trail Boss: Sharon Richardson
Contact: Kathleen Smart
kathleensmart99@gmail.com

April 11/Corral 86

Trail Ride, Crystal Hills Contact: Amy Nelson (661) 317-1745

April 11-12/Corral 101

Horse Show, Hansen Dam Contact:
Kim Estrada (818) 497-4730
rockbacknzip@aol.com

April 12/Corral 2

Trail ride, TBD Contact: Ann Regan
annregan@sbcglobal.net

April 12/Corral 12 & 22

Trail ride, Vasquez Contact:
Patty Hug pattyhug@ca.rr.com

April 12/Corral 43

Gymkhana, Tri-Valley Riders Contact:
Crystal Florian (951) 537-8825

April 15/Corral 83

Trail ride, Panorama Heights Contact:
Susan Mustaffa (661) 538-0995

April 18/Corral 20

RAIN DATE: April 25
8th Annual Terry Kaiser Memorial Trail Trials, Lake View Terrace Contact: Becky Borquez (818) 262-7764

April 18/Corral 37

Gymkhana, Thousand Oaks Contact:
Sharyn Henry redhatcowgirl@yahoo.com

April 18/Corral 138

Trail ride, Portal Ridge Contact: Cynthia (661) 618-5146

April 19/Corral 103

Trail Ride, Arrastre Falls Contact:
Dawn Walker (760) 961-7879

**Equestrian Trails Inc.****Coming Events Calendar**

Corrals: Is your event listed below? If not, let us know! Is your event being cancelled? If yes, please let us know! insurance@etnational.com

If it is not listed accurately, it won't be covered!

All checks coming to National must be made out to: ETI or ETI Equestrian

April 23/Corral 83

Trail ride, PCT Rosamond Contact:
Susan Mustaffa (661) 538-0995

April 24-26/Corral 14

Oynx Drive Contact: Jim & Julie
Porter (760) 549-3042

April 25/Corral 15

Trail Ride & Easter egg hunt, Oro Grande
Contact: Lexi Albin (661) 338-8746
lexijanene@gmail.com

April 25/Corral 22

Bert Bonnett & Doc Larsen Ride,
Ranger Park Trail Boss: Allan
Johnson Contact: Kathleen Smart
kathleensmart99@gmail.com

April 25/Corral 54

Counselman's Ride, Mountain Meadows
Contact: Carry Wendler (818) 266-7664

April 25/Corral 88

Trail Ride, Phelan Contact: Noel
Cook (951) 427-9343

April 26/Corral 138

Fundraiser ride, Saddleback Butte
Park Contact: Elaine (661) 946-1976
emac43031@gmail.com

April 26/Corral 22

Playday, Gibson Ranch Contact: Jeanette
Provolt countryathear.jp@verizon.net

MAY 2026**May 2/Corral 88**

Trail Ride, Wildwood Canyon Contact:
Noel Cook (951) 427-9343

May 3/Corral 37

Ranch Horse Show, Thousand Oaks
Contact: Sharyn Henry
redhatcowgirl@yahoo.com

May 3/Corral 86

Poppy Ride Contact: Janette Beas
(858) 692-6836

May 3/Corral 88

Obstacle Challenge #2 Contact:
Pam Garon (760) 917-2673

May 3/Corral 138

Trail ride, Vasquez Contact: Kimberly
(661) 478-2770 jdwright@aol.com

May 6/Corral 66

Trail ride, Rainbow Basin Contact:
Jamie Rees (760) 953-7235

May 9/Corral 3

Trail Ride, Big Bear Contact: Cindi
Schaub (909) 354-1613

May 9/Corral 12

Trail ride, Malibu Creek Contact:
Patty Hug pattyhug@ca.rr.com

May 9/Corral 15

Trail Ride, Idyllwild Contact: Lexi Albin
(661) 338-8746 lexijanene@gmail.com

May 9/Corral 22

Progressive Dinner Ride, Agua Dulce
Trail Boss: Craig Tognazzini-
Tentative Contact: Kathleen Smart
kathleensmart99@gmail.com

May 14/Corral 83

Trail ride, Glider Port Contact:
Monica Lindsey (661) 805-1244

May 16/Corral 20

Trail ride, Hansen Dam Contact: Nikki
Ahten (818) 489-6527

May 16/Corral 37

Gymkhana, Thousand Oaks Contact:
Sharyn Henry redhatcowgirl@yahoo.com

May 16-17/Corral 88

Dusty Spurs Gymkhana Contact:
Charles Sneed (760) 917-2673

May 16/Corral 138

Flower ride, Homer or Hansen Dam
Contact: Kimberly (661) 478-2770
jdwright@aol.com

May 17/Corral 43

Gymkhana (night), Tri-Valley Riders
Contact: Crystal Florian (951) 537-8825

May 17/Corral 54

Trail ride, TBD Contact: Carry
Wendler (818) 266-7664

May 17/Corral 88

Dusty Spurs Gymkhana 2 Day Buckle
Series Contact: Charles Sneed
(760) 917-2673

May 21-25/Corral 86

Camping, Pioneertown Contact: Karen
Dagnan (661) 904-2294

May 22/Corral 83

Mulligan Ride Contact: Carol Knipp
(916) 337-2755

May 23/Corral 3

Trail Ride, Big Bear Contact: Cindi
Schaub (909) 354-1613

May 23/Corral 118

Trail ride, Sycamore Canyon Contact: Dean
Wageman deanwagemancnc@gmail.com

May 24/Corral 22

Playday, Gibson Ranch Contact: Jeanette
Provolt countryathear.jp@verizon.net

May 30-31/Corral 101

Horse Show, Hansen Dam Contact:
Kim Estrada (818) 497-4730
rockbacknzip@aol.com

May 30/Corral 103

Trail Ride, Mojave Narrows Contact:
Dawn Walker (760) 961-7879

May TBD/Corral 3

Paul Dietz clinic, Big Bear Contact:
Cindi Schaub (909) 354-1613

May TBD/Corral 10

Clinic, Mitchell Ranch Contact: Gabrielle
Dagan-Winstead (818) 899-6702
eticorral10@yahoo.com



Equestrian Trails Inc.

Coming Events Calendar

Corrals: Is your event listed below? If not, let us know! Is your event being cancelled? If yes, please let us know! insurance@etinternational.com

If it is not listed accurately, it won't be covered!

All checks coming to National must be made out to: ETI or ETI Equestrian

JUNE 2026

June 2/Corral 54

New member BBQ Contact: Carry Wendler (818) 266-7664

June 6/Corral 88

Trail Ride, Norco Contact: Noel Cook (951) 427-9343

June 10/Corral 83

Buckeye Ride Contact: Susan Mustafa (661) 538-0995

June 11-14/National

Spring Ride, Chihuahua Valley Contact: office@etinternational.com

June 13/Corral 3

Trail Ride, Big Bear Contact: Cindi Schaub (909) 354-1613

June 13/Corral 15

Trail Ride, Idyllwild Contact: Lexi Albin (661) 338-8746 lexijanene@gmail.com

June 13/Corral 138 & 86

Day of the Horse, Vasquez Rocks Contact: Kimberly Dwight (661) 478-2770

June 14/Corral 37

Ranch Horse Show, Thousand Oaks Contact: Sharyn Henry redhatcowgirl@yahoo.com

June 20/Corral 37

Gymkhana, Thousand Oaks Contact: Sharyn Henry redhatcowgirl@yahoo.com

June 20/Corral 43

Gymkhana (night), Tri-Valley Riders Contact: Crystal Florian (951) 537-8825

June 20/Corral 83

Overnight Camp Out and Cub Lake Wine Ride Contact: Kim Brandon (661) 714-6038

June 20/Corral 88

Dusty Spurs Gymkhana Contact: Charles Sneed (760) 917-2673

June 20/Corral 103

Trail Ride, Puma Canyon Contact: Dawn Walker (760) 961-7879

June 27/Corral 3

Trail Ride, Big Bear Contact: Cindi Schaub (909) 354-1613

June 27/Corral 86

Progressive Brunch & Fundraiser ride Contact: Vicki/Lalita (661) 816-1054

June 28/Corral 138

Trail ride, Zigzag, Littlerock Contact: Christine (661) 713-6675

June 28/Corral 22

Playday, Gibson Ranch Contact: Jeanette Provolt countryathear.jp@verizon.net

June TBD/Corral 3

Belt Buckle Obstacle Challenge, Big Bear Contact: Cindi Schaub (909) 354-1613

JULY 2026

July 4/Corral 15

Parade, Acton Contact: Lexi Albin (661) 338-8746 lexijanene@gmail.com

July 4/Corral 66

Parade, Newberry Springs Contact: Jamie Rees (760) 953-7235

July 4/Corral 86 & 138

Acton Parade Contact: Lalita/Janette (661) 992-4337

July 5/Corral 88

Trail Ride, Wrightwood Contact: Noel Cook (951) 427-9343

July 11/Corral 3

Trail Ride, Big Bear Contact: Cindi Schaub (909) 354-1613

July 11/Corral 12 & 22

Trail ride, Mt Pinos Contact: Patty Hug pattyhug@ca.rr.com

July 11-12/Corral 54

Beach ride, TBD Contact: Carry Wendler (818) 266-7664

July 11/Corral 138

Trail ride, Placerita Nature Center Contact: Sherrie (213) 399-4290 sherriestolarik@gmail.com

July 18/Corral 20

"Beat the Heat" Trail Ride, Hansen Dam Contact: Becky Borquez (818) 262-7764

July 18/Corral 37

Gymkhana, Thousand Oaks Contact: Sharyn Henry redhatcowgirl@yahoo.com

July 18/Corral 43

Gymkhana, Tri-Valley Riders Contact: Crystal Florian (951) 537-8825

July 18/Corral 88

Dusty Spurs Gymkhana Contact: Charles Sneed (760) 917-2673

July 18/Corral 103

Trail Ride, Mojave Narrows Contact: Dawn Walker (760) 961-7879

July 23/Corral 83

Trail ride, Tehachapi Nature Park Contact: Liz Komin (661) 304-5720

July 25/Corral 3

Trail Ride, Big Bear Contact: Cindi Schaub (909) 354-1613

July 25/Corral 86

Trail Ride, Acton Hills Contact: Mike Fahnstock (818) 635-6180

July 25/Corral 118

Trail ride, Happy Camp Contact: Dean Wageman deanwagemancnc@gmail.com

July 26/Corral 22

Playday, Gibson Ranch Contact: Jeanette Provolt countryathear.jp@verizon.net

July 28-Aug 4/Corral 88

Camping, Montaña De Oro Contact: Deborah Jasper (760) 508-3100

July 29/Corral 66

Moonlight Ride, Yoder's Little Yard Contact: Jamie Rees (760) 953-7235

**Equestrian Trails Inc.****Coming Events Calendar**

Corrals: Is your event listed below? If not, let us know! Is your event being cancelled? If yes, please let us know! insurance@etnational.com

If it is not listed accurately, it won't be covered!

All checks coming to National must be made out to: ETI or ETI Equestrian

July TBD/Corral 10

Clinic, Mitchell Ranch Contact: Gabrielle Dagan-Winstead (818) 899-6702
eticorral10@yahoo.com

AUGUST 2026**August 4-9/Corral 15**

Camping, Montaña de Oro Contact: Lexi Albin (661) 338-8746
lexijanene@gmail.com

August 8/Corral 86

Pool party Contact: Karen Dagnan (661) 904-2294

August 8/Corral 103

Trail Ride, TBD Contact: Dawn Walker (760) 961-7879

August 8/Corral 138

Obstacle day at Kimberly's Contact: Kimberly (661) 478-2770
jdwright@aol.com

August 15/Corral 3

Trail Ride, Big Bear Contact: Cindi Schaub (909) 354-1613

August 15/Corral 15

Poker Ride, Mojave Forks Contact: Lexi Albin (661) 338-8746
lexijanene@gmail.com

August 15/Corral 37

Gymkhana, Thousand Oaks Contact: Sharyn Henry redhatcowgirl@yahoo.com

August 15/Corral 88

Dusty Spurs Gymkhana Contact: Charles Sneed (760) 917-2673

August 23/Corral 22

Playday, Gibson Ranch Contact: Jeanette Provolt countryshear.jp@verizon.net

August 24-31/Corral 12, 20, 22

Camping, Moro Bay Contact: Patty Hug pattyhug@ca.rr.com

August 29/Corral 3

Trail Ride, Big Bear Contact: Cindi Schaub (909) 354-1613

August 29/Corral 66

Tack cleaning, lunch & mtg, RJB Ranch Contact: Jamie Rees (760) 953-7235

August 29/Corral 88

Obstacle Challenge #3 Contact: Pam Garon (760) 917-2673

August 30/Corral 86

Trail Ride, Mt. Pinos Contact: TBD

SEPTEMBER 2026**September 3-7/Corral 86**

Camping, Mojave Narrows Contact: TBD

September 5/Corral 88

Trail Ride, TBD Contact: Noel Cook (951) 427-9343

September 9/Corral 54

Chilli cook-off Contact: Carry Wendler (818) 266-7664

September 11-13/Corral 14

Inyokern Drive Contact: Kate Christman (661) 824-2609 or Denise Smith (760) 977-6046

September 12/Corral 3

Trail Ride, Big Bear Contact: Cindi Schaub (909) 354-1613

September 12/Corral 12

Trail ride, Hansen Dam Contact: Patty Hug pattyhug@ca.rr.com

September 12/Corral 15

Trail Ride, Vasquez Rocks Contact: Lexi Albin (661) 338-8746
lexijanene@gmail.com

September 12-13/Corral 101

Horse Show, Hansen Dam Contact: Kim Estrada (818) 497-4730
rockbacknzip@aol.com

September 13/Corral 43

Gymkhana, Tri-Valley Riders Contact: Crystal Florian (951) 537-8825

September 13/Corral 138

Trail ride, Mint Canyon Contact: Charlene McMullen (661) 644-3371

September 14-18/Corral 83

Camping, TBD Contact: TBD

September 19/Corral 20

Trail ride, Happy Camp (Moorpark) Contact: Jeanne Mather

September 19/Corral 37

Gymkhana, Thousand Oaks Contact: Sharyn Henry redhatcowgirl@yahoo.com

September 19/Corral 66

Trail ride, Yoder's Little Yard Contact: Jamie Rees (760) 953-7235

September 19/Corral 88

Dusty Spurs Gymkhana Contact: Charles Sneed (760) 917-2673

September 19/Corral 118

Trail ride, Paramount Ranch Contact: Dean Wageman deanwagemancnc@gmail.com

September 24/Corral 83

Trail ride, Bear Valley Ride Contact: Susan Mustaffa (661) 538-0995

September 26/Corral 3

Trail Ride, Big Bear Contact: Cindi Schaub (909) 354-1613

September 26/Corral 22

Moonlight Ride, Hideaway Trail Boss: Allan Johnson Contact: Kathleen Smart
kathleensmart99@gmail.com

September 26/Corral 86

Full Moon Ride Contact: Kat Ferrell (661) 208-1331

September 26/Corral 103

Trail Ride, Wildwood Canyon Contact: Dawn Walker (760) 961-7879



Equestrian Trails Inc.

Coming Events Calendar

Corrals: Is your event listed below? If not, let us know! Is your event being cancelled? If yes, please let us know! insurance@etnational.com

If it is not listed accurately, it won't be covered!

All checks coming to National must be made out to: ETI or ETI Equestrian

September 27/Corral 37

Ranch Horse Show, Thousand Oaks
Contact: Sharyn Henry
redhatcowgirl@yahoo.com

September 27/Corral 22

Playday, Gibson Ranch Contact: Jeanette Provolt
countryathear.jp@verizon.net

September TBD/Corral 3

Paul Dietz clinic, Big Bear Contact: Cindi Schaub (909) 354-1613

September TBD/Corral 10

Clinic, Mitchell Ranch Contact: Gabrielle Dagan-Winstead (818) 899-6702
eticorral10@yahoo.com

OCTOBER 2026

October 3-10/Corral 14

Lone Pine to Bishop Drive Contact: Sue Martzolf (760) 662-6102

October 3/Corral 15

Phelan Phun Day Parade, Phelan Contact: Lexi Albin (661) 338-8746
lexijanene@gmail.com

October 3/Corral 88

Phelan Phun Days Parade Contact: Deborah Jasper (760) 508-3100

October 4/Corral 12

Trail ride, TBD Contact: Patty Hug
pattyhug@ca.rr.com

October 8-11/Corral 22

Camping, Alabama Hills/Lone Pine Trail Boss: Allan Johnson Contact: Kathleen Smart
kathleensmart99@gmail.com

October 11/Corral 2

Trail ride, TBD Contact: Ann Regan
annregan@sbcglobal.net

October 11/Corral 37

Ranch Horse Show, Thousand Oaks Contact: Sharyn Henry
redhatcowgirl@yahoo.com

October 11/Corral 138

Trail ride, Acton Hills Contact: Tracy (818) 640-1801

October 15/Corral 83

Trail ride & lunch, Sand Canyon Contact: Monica Lindsey (661) 805-1244

October 16-18/Corral 15

Camping, Lake Perris Contact: Lexi Albin (661) 338-8746
lexijanene@gmail.com

October 17/Corral 20

Trail ride, Vasquez Rocks ride, Agua Dulce Contact: Nikki Ahten (818) 489-6527

October 17/Corral 37

Showdeo, Thousand Oaks Contact: Sharyn Henry
redhatcowgirl@yahoo.com

October 17/Corral 66

Charity Ride, Peggy Sue's Contact: Jamie Rees (760) 953-7235

October 17/Corral 88

Dusty Spurs Gymkhana Contact: Charles Sneed (760) 917-2673

October 17-18/Corral 101

Horse Show, Hansen Dam Contact: Kim Estrada (818) 497-4730
rockbacknzip@aol.com

October 17/Corral 118

Trail ride, Santa Rosa Valley Contact: Dean Wageman
deanwagemancnc@gmail.com

October 18/Corral 43

Gymkhana, Tri-Valley Riders Contact: Crystal Florian (951) 537-8825

October 18/Corral 54

Play day gymkhana, Arro Seco Arena Contact: Carry Wendler (818) 266-7664

October 18/Corral 86

Trail Ride, Juniper Hills Contact: Elizabeth Bridwell (661) 609-3884

October 18/Corral 103

Trail Ride, Juniper Flats Contact: Dawn Walker (760) 961-7879

October 24/Corral 37

Gymkhana, Thousand Oaks Contact: Sharyn Henry
redhatcowgirl@yahoo.com

October 25/Corral 22

Playday, Gibson Ranch Contact: Jeanette Provolt
countryathear.jp@verizon.net

October 31/Corral 38

Halloween Play Day, Martinez Arena Contact: Liz Radley
liz@lizradley.com

October 31/Corral 138 & 86

Halloween Ride, Vasquez Rocks Contact: Kimberly Dwight (661) 478-2770

October 31/Corral 88

Obstacle Challenge #4 Contact: Pam Garon (760) 917-2673

October TBD/Corral 3

Belt Buckle Obstacle Challenge, Big Bear Contact: Cindi Schaub (909) 354-1613

October TBD/Corral 10

Clinic, Mitchell Ranch Contact: Gabrielle Dagan-Winstead (818) 899-6702
eticorral10@yahoo.com

NOVEMBER 2026

November 7/Corral 88

Trail Ride, TBD Contact: Noel Cook (951) 427-9343

November 7-8/Corral 22

Mulligan Stew Ride, TBD Trail Boss: Allan Johnson Contact: Kathleen Smart
kathleensmart99@gmail.com

November 7/Corral 138

Trail ride, Mescal Creek Contact: Elaine (661) 946-1976
emac43031@gmail.com

November 8/Corral 43

Gymkhana, Tri-Valley Riders Contact: Crystal Florian (951) 537-8825



Equestrian Trails Inc.

Coming Events Calendar

**Corrals: Is your event listed below? If not, let us know! Is your event being cancelled? If yes, please let us know! insurance@etinternational.com
If it is not listed accurately, it won't be covered!**

All checks coming to National must be made out to: ETI or ETI Equestrian

November 12/Corral 83

Trail ride, Placerita Nature Park Contact:
Kim Brandon (661) 714-6038

November 14/Corral 12

Trail ride, Sylmar Contact:
Patty Hug pattyhug@ca.rr.com

November 14/Corral 15

Poker Ride, Oro Grande Contact:
Lexi Albin (661) 338-8746
lexijanene@gmail.com

November 14/Corral 103

Trail Ride, Walnut Creek Contact:
Dawn Walker (760) 961-7879

November 15/Corral 138

Trail ride, Acton Hills ride
Contact: Kimberly (661) 478-2770
jdwright@aol.com

November 21/Corral 66

Trail ride, Tonka Town Contact: Jamie
Rees (760) 953-7235

November 21/Corral 86

Turkey Poker Ride, Peaceful Valley Contact:
Janette Beas (858) 692-6836

November 21/Corral 88

Dusty Spurs Gymkhana Contact:
Charles Sneed (760) 917-2673

November 22/Corral 22

Playday, Gibson Ranch Contact: Jeanette
Provolt countryathear.jp@verizon.net

November 28/Corral 88

Dusty Spurs - rain date Contact:
Charles Sneed (760) 917-2673

November 29/Corral 88

Obstacle Challenge #5 Contact:
Pam Garon (760) 917-2673

DECEMBER 2026

December 4/Corral 54

Christmas party Contact: Carry
Wendler (818) 266-7664

December 6/Corral 88

Trail Ride, Vazquez Rocks Contact:
Noel Cook (951) 427-9343

December 8/Corral 66

Christmas Party, RJB Ranch Contact:
Jamie Rees (760) 953-7235

December 10/Corral 83

Trail ride, Glider Port Contact:
Monica Lindsey (661) 805-1244

December 12/National

ETI Christmas ride Contact:
office@etinternational.com

December 12/Corral 14

Christmas Party Contact: Sue
Martzolf (760) 662-6102

December 12/Corral 22

Christmas Party, Simi Valley Host: Tom
& Kat Smart Contact: Kathleen Smart
kathleensmart99@gmail.com

December 12/Corral 38

Christmas Caroling on Horseback, Burbank
Contact: Liz Radley liz@lizradley.com

December 14/Corral 138

Christmas toy ride, La Cabana
Contact: Kimberly (661) 478-2770
jdwright@aol.com

NON ETI EVENTS

ELSA

Experience.Learning.Support.w/Animals
Therapeutic riding program
(310) 403-966 www.elsainc.org

Head's Up Therapy on Horseback

Nancy (818) 848-0870
www.headsuptherapy.com

Ride On Therapeutic Horsemanship

program for disabled riders
(818) 700-2971 www.rideon.org





ETI Corral 20
 8th Annual Terry Kaiser
TRAIL TRIAL
to benefit ETI National

Saturday, April 18, 2026
(Rain Date: April 25, 2026)
Ranger Park | Lake View Terrace

Take the challenge!
 New trail. Different obstacles.
 Always fun!

Corner of Foothill Blvd and Clybourn Ave

Entry Desk opens at 8 a.m. / First riders out at 9 a.m. / Last riders out at 10:30 a.m. NO EXCEPTIONS

For more information: Becky Borquez (818) 262-7764 | beckyborquez1@gmail.com



\$3/obstacle ETI Members \$30 TOTAL | \$4/obstacle non-members \$40 TOTAL | MUST DO 10 FOR PRIZES | \$25 SCHOOLING

Ribbons 1st - 5th place in OPEN, NOVICE & JUNIOR DIVISIONS

STALLIONS MUST BE PRE-APPROVED & RIDERS OVER 18

ALL RIDERS UNDER 18 MUST WEAR HELMETS

Rider's Name: ETI Member? Corral # No

Horse's Name: Email:

Address: City: Zip:

Phone: Emergency Contact: Phone:

Open: Novice: Schooling: Helmet: Waiver:

Junior (14 and under Jan 2026): Jr. Birth Date:

ETI	Non-ETI	Schooling
\$ <input type="text"/>	\$ <input type="text"/>	\$25
Total: <input type="text"/>		Check # <input type="text"/>

No refunds without doctor/vet statement

Please make checks payable to ETI Corral 20. Mail with waiver to: 334 E. Fiesta Green, Port Hueneme, CA 93041



ETI NATIONAL ANNUAL SPRING RIDE

June 11 – June 14 2026

ETI SPRING RIDE

Chihuahua Valley Horse Camp, Warner Springs

- Individual Sites with Corrals, Water & Shade
- *Arena * Round Pen *
- * Wash Rack * Showers *
- * Lots of Fun with Friends *



- * Wagon-wheel rides *
- Delicious food catered by our famous cook shack crew

Ride Chairs: Nikki Ahten & Tom Kirsch
Contact Nikki Ahten Email: OFFICE@ETINATIONAL.COM

PRICE: \$300 ETI MEMBERS – \$325 NON-MEMBERS BY MAY 15

\$325 ETI members – \$350 Non-Members May 16-31
Pay in full OR \$50 non-refundable deposit with balance due May 20

INCLUDES: Camp Fees & All Meals-Dinner Thursday thru Breakfast Sunday

RESERVATIONS DEADLINE MAY 31, 2025

★NO REFUNDS AFTER MAY 20★

MAIL RESERVATION TO: ETI OFFICE P.O Box 920668, SYLMAR CA 91392

CHECKS PAYABLE TO: EQUESTRIAN TRAILS, INC. OR ZELLE TO: OFFICE@ETINATIONAL.COM

NAME: _____ CORRAL #: _____

ADDRESS: _____

CITY: _____ STATE: _____ ZIP: _____

PHONE: _____ EMAIL: _____

NAME ON TAG: _____

EMERGENCY CONTACT: _____ PHONE: _____

TRAVELING/CAMPING WITH: _____ Diet: Vegetarian _____ Regular _____

PAYMENT BY CHECK #: _____ AMOUNT ENCLOSED: _____

Please use one form for each person.
Everyone must sign a Waiver & Release form that will be provided.



Equestrian Trails Inc. Corral 35

RATTLESNAKE AVOIDANCE TRAINING

How will your dog react when confronted with a rattlesnake?

Training your dog to avoid and get away from a dangerous rattlesnake is training that can save your dog's life and maybe yours too. Equestrian Trails Inc., Corral 35 a horse-riding club of Glendora CA is hosting this life saving training:

Location: Carlyle Linder Equestrian Center
1000 N Glendora Mtn. Road
Glendora, CA 91741

Date: May 30, 2026 (8 am to 1 pm)

Cost: \$75.00

Time: Please call or text to schedule your appointment.

Becky (626) 253-2146



Dogs must be between 6 months and 10 years. Payment is due at the time of training. Payment can be made in cash, check or Zelle.



SNAKE! What To Do Next

This is a reprint from June 2012. Still great information as the snakes are out!! There was a notification on Next Door last week: "Rattlesnake Bite Season has Begun. My dog was bitten by a four-foot-long rattlesnake that was coiled up in the tall grass alongside Lower Beacon Trail in Griffith Park on Friday at 10:45AM. It struck her in the lip when she went to sniff it."

With temps rising, so does concern about SNAKES. Our local Southern Pacific Rattlesnakes are in abundance right now because they are coming out to get some sun! There have also been record numbers this year, and the belief is that because of excess rains in 2010, the rodent population exploded in 2011, which has resulted in more snakes in 2012. Authorities are also claiming to be finding larger nests than usual. I don't have the stats on that, but whether or not it's true, it IS spring and it IS snake season!



A few TIPS & MYTHS to dispel:

1. The size of the rattler doesn't matter. They say the babies cannot control their venom, but the adult has more venom. The adult's larger mouth is more likely to be able to get its back teeth into someone than a baby rattler's mouth. It's safe to say you do not want to be bitten by either one!
2. If you see a rattlesnake, and if you CAN, the best thing to do is back away and ignore it. They are as afraid of you as you are of them.

(I hike weekly in the Angeles National Forest and have happened upon plenty of rattlers. They often do not rattle. They are often not found in the coiled position. I have literally walked right over them several times. They froze until we passed. They were terrified. We are not prey. An attack will only happen if the animal is frightened or threatened. I am NOT recommending walking over rattlesnakes. I'm just stating what my reality has been so far. Rattlers are dangerous!)

3. When you hike in brushy, chaparral-type areas, make some noise as you go. Drag a stick. Talk loudly to your friend (because you shouldn't hike alone!). This

will keep most wild animals far away.

- a. If you come across a log, don't step over, step ON it, then over.
 - b. If you are climbing, try to see where you are putting your hands before you put them there.
4. In your yard, just watch out. They can be in the vegetation, or anywhere really.
 5. Rattlers are more likely to be found where gophers are. So, if your yard is gopher friendly, it will also be rattler friendly. (They don't like watered lawns, I hate to admit.)

What to do if you find one?

1. Please don't kill it!! They are important to the ecosystem. They are keeping our rodent population down. If you can just leave it and warn nearby people, that's best.
2. You can also call a local reptile rescue or herpetologists group, and they may be able to move the snake for you.
3. If you MUST destroy it, be very careful in handling afterwards because the teeth and head are still toxic. And, be aware, trying to kill a rattlesnake can get you bitten!

**Mostly though, you are going to see king snakes (they will shake their tail at you, too!) who EAT rattlers and gopher snakes who... well, you know! *These snakes are harmless to humans*



Should you have any questions about rattlesnakes or other local reptiles, please do not hesitate to email info@terangaranch.org or call 1-818-305-HERP. We are Shadow Hills local reptile rescue!

Dana Stangel
Teranga Ranch & Rescue
SHPOA Wildlife Representative



A Neighborhood Where Families Grow





Blast From The Past: April 2022

He's "JUST" a Trail Horse

Submitted by Anita Martin, Corral 9

He's "JUST" a Trail Horse**

I can't count the number of times that I have heard the words, "Oh, you just trail ride" or "It's just a trail horse", especially from other riders who focus on only one discipline. And each time I have to smirk a little. To be JUST a trail rider you need a very special talented kind of steed for which many folks don't realize the expertise required:

- He needs to be as maneuverable as a Dressage Horse...to be able to place each foot exactly where and when you need because there is a steep cliff drop-off on one side and a wall of solid mountainside on the other. A sure-footed horse is a must to be a good Trail Horse.

- He needs to be as bold as a Foxhunter...to go willingly where he is pointed, whether that is over a log, up a steep hill, down a gully, through rushing water, boot-sucking mud or bushwhacking through thick scrub.

- He needs to be as agile as a Show Jumper...able to easily twist and turn around trees and bushes, boulders and hop over fallen logs.

- He needs to have the stamina of an Endurance Horse...because a seven mile ride can easily turn into a 20 mile ride if his "on-board GPS" (aka rider) takes a wrong turn.

- He needs to have the calm mind of a Rodeo Pick-Up Horse...because many horses can not hold it together under stress. But a good Trail Horse must be able to cope with the high emotional energy often coming from other horses in front, behind and either side of him. He needs to always be level-headed and sensible.

- He needs to manage being squashed against others like a Polo Pony...because on some trails his nose might be pushed against a tail in front, or flanks pressed side-by-side with rider's knees banging against other rider's knees, or another horse breathing down his back. He needs to have patience and get along well with others.

- He needs to cope with bursts of speed like a

Racehorse.....because if that "on-board GPS" (aka rider), stated above, turns the short ride into 20 miles you won't get home till dark if walking that whole distance.

- He needs to be a clever problem-solver with his mind and feet like a Cutting horse....sometimes his rider is gonna get him stuck in places that seem impossible to get out of!

- He needs to be brave like a Cow Horse because not only will he have to deal with protective mama cows and bulls out on the trails, but he'll also be faced with mountain bikes, ATVs, motorcycles, strollers, tractors, logging equipment, chainsaws, horse-drawn carts, bullet-riddled appliances, floating plastic bags and balloons, booming thunder and pouring rain with flapping slickers, loose wild horses and burros, and all forms of wildlife.

- And he needs to be cuddly and sweet like a Child's Pony....because he will spend countless hours exploring trails with his rider.

But hey.... He's "JUST" a Trail Horse!

****Author unknown ****

Submitted by Anita Martin, President, Corral 9





20 Tips To Enjoy Spring With Your Horse

Horse Illustrated, April 17, 2012

Farewell frigid temperatures, frozen water buckets, winter blankets, gray skies and brown pastures. Hello, spring! It's what we've all been waiting for. Here are 20 things to kick-start the riding season.

For you:

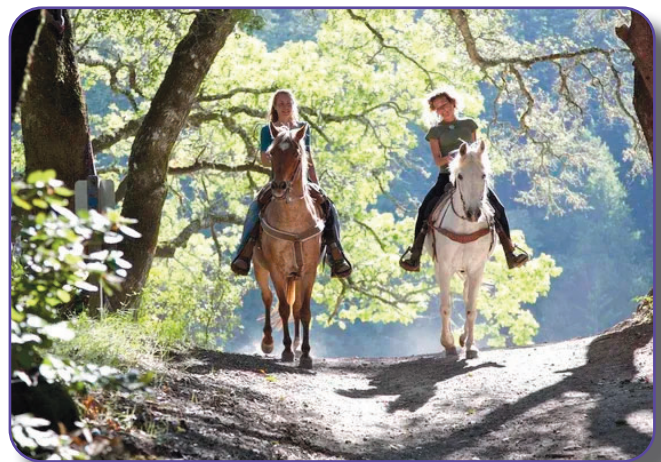
1. Take advantage of spring sunshine and daylight saving time to go on longer rides.
2. Stress less! Get in the saddle, or brush away your worries with a soothing grooming session.



3. Schedule some lessons to get back into the riding groove.

4. If you spent a little too much time on the couch this winter, it's time to get fit to ride. Get inspired with HorseChannel's Guide to Equestrian Fitness.

5. Organize a trail ride with some friends. Pack lunches and venture into nature. (Tailor your ride to accommodate your horses' fitness levels in the early season.)



6. If trail riding is your thing, look for new trails to ride, or consider giving sports such as competitive trail, endurance or mounted orienteering a try (www.natrc.org; www.aerc.org; www.nacmo.org).

7. Check for last-minute deals on that riding vacation you've been dreaming of.

8. Plan your show season, whether it's a few local shows or a fully loaded circuit. Note the closing dates for entries and start working toward your competition goals.

9. Try on your show clothes from last season, and make sure everything fits and is in good repair.

10. Take a minute to lean over the fence rail and admire your horse in springtime!



20 Tips To Enjoy Spring With Your Horse (cont.)

Horse Illustrated, April 17, 2012

For your horse:

11. Do a little spring cleaning. Go through your tack room and toss anything that's past its prime, expired or hopelessly beyond repair.

12. Finish shedding: Get out your weapon of choice—curry comb, shedding blade/block/comb—and apply some elbow grease. Say goodbye to the last of that scruffy winter coat!

13. Purchase warm-weather supplies: fly spray, shampoo, et cetera. Review and re-stock your first aid kit, too.

14. Schedule your spring vaccinations if you haven't already. This is also the perfect time to review your horse's deworming program and feeding plan with your vet, and implement any changes.

15. Stay on track with deworming: Write down when you deworm and which product you use. Use our handy downloadable chart to keep your horse's deworming history organized.

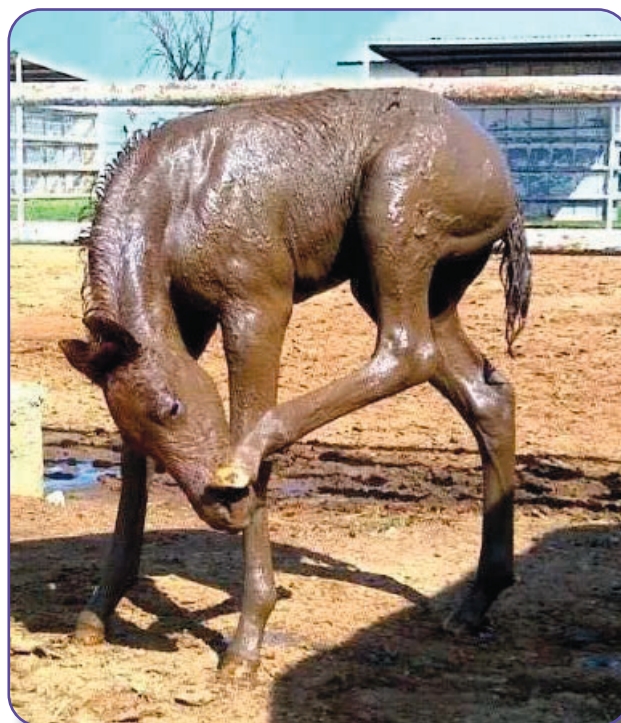
16. Monitor early spring grazing to avoid laminitis. A grazing muzzle or dry lot is advisable for high-risk horses (easy keepers, overweight or insulin-resistant horses).



17. Clean, repair and store your horse's winter blankets.

Jumbo plastic storage bags with a zip seal are one handy solution. Be sure your stored blankets are safe from moisture and mice, or you'll have an unpleasant surprise in the fall.

18. Manage mud to avoid skin crud; spring is soggy in some parts of the country. Hose your horse off if it's warm enough, or let mud dry before brushing it off.



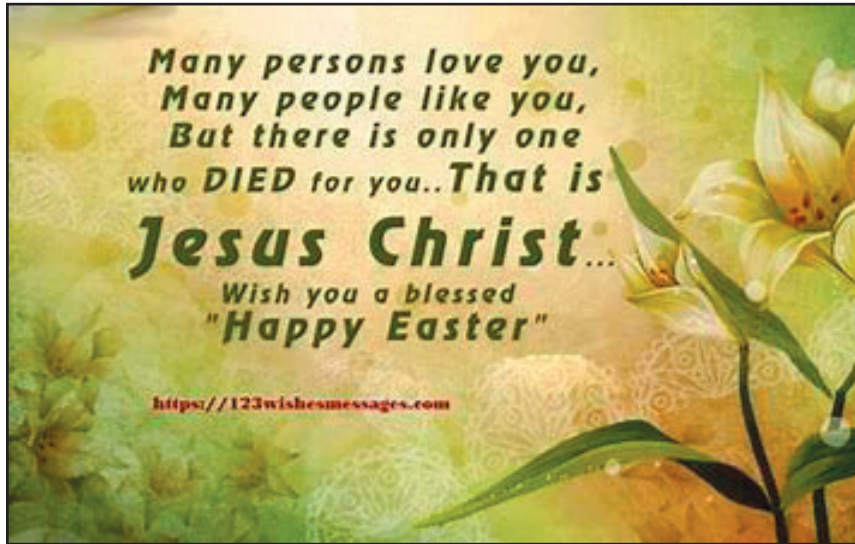
Brushing wet mud can cause skin irritation.

19. Make an exercise plan for your horse. You want to gradually work him back into shape.

20. Give your horse a makeover. Clip his bridle path, fetlocks, muzzle and anything else that's a bit fuzzy or overgrown.

<https://www.horseillustrated.com/horse-keeping-spring-break-list>





We all need encouragement and positive energy...especially these days. Each month, I'm going to send some positivity your way on this page. If you have a favorite saying, please share at magazine@etnational.com and I'll include the following month!!

Your Editor





CORRAL NEWS

Corral 2

Pasadena/San Gabriel/Altadena

Pres. Ann Regan

(818) 321-6931



Corral 3

Walnut Creek

Pres. Cindi Schaub

(909) 354-1613



Corral 10

Lakeview Terrace

Pres. Pam Miller

(818) 262-2846



Corral 12

Sylmar Vista Del Valle

Pres. Patty Hug

(818) 367-2056



Corral 14

Western Wagons

Pres. Jeanette Hayhurst

(760) 953-8520



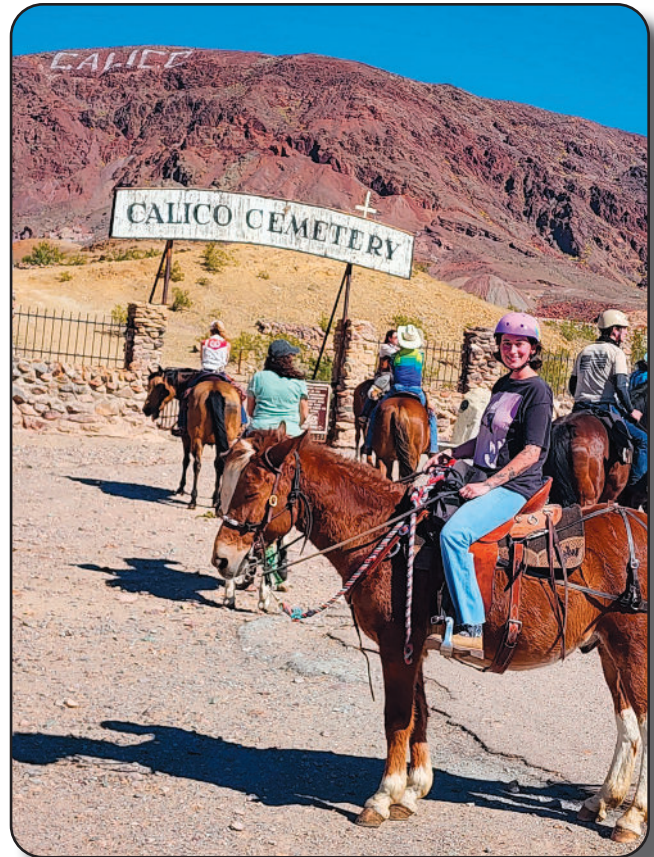
Corral 15

Desert Dusk Drifters

Pres. Marge Coulter

(760) 490-5048

I'm writing to share a recap from ETI Corral 15's Calico Ride, and what an incredible day it was! We had 22 riders join us for an amazing ride through the area around Calico Ghost Town, surrounded by so much rich history.



One of the highlights was riding the very trail once traveled by the legendary 20-Mule Team, hauling borax from Calico out to Daggett....it was one of those moments where you can practically feel the past in the hills around you. The weather was absolutely beautiful, the scenery was stunning, and the whole group had a fantastic time from start to finish.



great weather, great horses, and great people.



Everyone enjoyed the beautiful ride and the opportunity to spend time together doing what we love most—riding and sharing good fellowship. It was another memorable day for our corral, and we are grateful for the fun, friendship, and horsemanship that continue to bring our group together.

Warmly,
Kimberly

ETI Corral 15 – Desert Dusk Drifters

After the ride, we enjoyed a fabulous lunch at the Ghost Town, and everyone loved having time to walk around, explore the shops, and soak up the old-west charm. It truly was an epic day, and we're so grateful to all the riders who came from near and far to be part of it.

And as a fun bonus: we even had three mules in our group! If they only knew the history their long-ago ancestors may have traveled through in those very same hills.

Thank you for all you do in supporting ETI clubs and helping keep these traditions alive. If you'd like photos to include or share, I'd be happy to send them over.

ETI Corral 15 had 11 riders join us for our Puna Canyon ride. It was a wonderful day filled with

Corral 20

Shadow Hills Rough Riders
Pres. Cheri Ovayan
(818) 335-2884



Corral 22

Intervalley Trail Riders
Pres. Kathleen Smart
(626) 590-6792
www.corral22.com





Corral 35

Oak Canyon Riding Club
Glendora
Pres. Dottie Hilliard
(626) 335-7112



Like a bear coming out of hibernation, Corral 35 is surfacing and looking for food, fun, and friends. As we enter into the season of renewed life, the members of our Corral are ready to bring it on!!

April will find us on Saturday, April 11, representing Corral 35 at Glendora's Spring Trails Day at our South Hills Wilderness Park. We co-sponsor this event with the City of Glendora, the Glendora Rotary Club, and the Glendora Trails Council. All members of our Corral are invited to attend and assist. Horses are welcome. My horse, Sera, and I will be there from 10:00am until 1:00pm for a touch and feel session with a gentle equine as we discuss local trail riding.

Following Trails Day, we will be at Glendora's Celebration of Earth Day on Saturday, April 18, at Finkbiner Park, in Glendora, from 9:00 until 1:00. Come by and help me educate folks on proper trail etiquette when they encounter equestrians on the trail. Sera will give folks an opportunity to engage with a real live horse! This is a great way to let people know about our Corral and local Equestrian Park and Corral events. We look forward to seeing you at the blessing of the Animals that same day and location.

Looking ahead, we will be offering our Annual Rattlesnake Awareness session for dogs on Saturday, May 30, to be held at the Glendora Equestrian Park. See the flyer in this issue of the magazine.

Our next Corral meeting will be on Wednesday, April 15, 6:00pm at our clubhouse at the Equestrian Park in Glendora. Come and see the progress of the work being done to revive our storage facility, which we affectionately call, "The Bin."

Like the vibrant spring wildflowers popping up at



our arena, so is the spirit of the members of Corral 35!!! We are ready to rumble!

Happy Trails,
Dottie Hilliard

Corral 37

Conejo Riders
Thousand Oaks
Pres. Sharyn Henry
(805) 795-6493
www.eticorral37.org



Corral 38

Griffith Park Equestrians
Burbank/Glendale
Pres. Diana Hoch
(818) 841-6422
www.corral38eti.com



Corral 43

Tri Valley Riders
Nuevo/Riverside/Norco/Hemet
Pres. Crystal Florian
(951) 537-8825



Corral 54

Rocky Hill Riders
Chatsworth
Pres. Carey Wendler
careywendler@yahoo.com



Corral 66

Route 66 Riders
Barstow/Newberry Springs
Pres. Jamie Rees
(760) 953-7235



On March 18, three riders weathered the heat to explore Lake Delores. The water park opened in the 1960's. There





have been two renovations since: Rock-a-hula and Discovery waterparks. Since 2004, the park has been closed. The rider's road around the park reminiscing about how fun it was to go to.

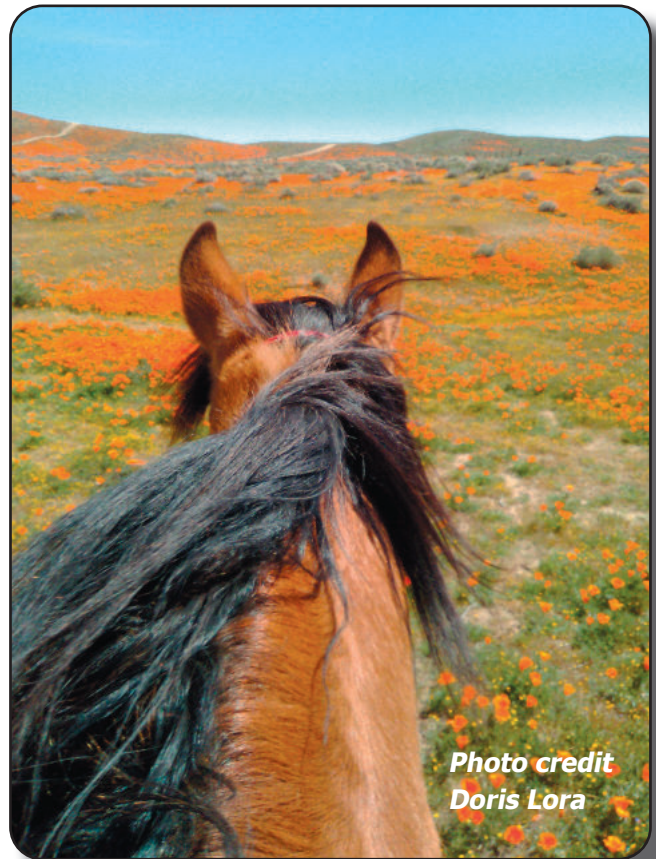
Corral 83

Tehachapi Mountain Riders
Tehachapi
Pres. Carolyn McIntyre
(661) 972-2337



March was a phenomenal month for perfect riding weather. On March 5, a dozen riders enjoyed a 6.2 mile, two hour loop ride around Fairmont buttes in west Antelope valley. Riders were treated to a wildflower extravaganza. Lyn Engels was helpful in leading the ride.

Due to the wet winter and snow pack of the major California Mt ranges, some seasonal springs were present on the valley floor. A spring at the base of the butte was feeding a very small stream complete with moss and tadpoles. So much greenery in and around the flowers.



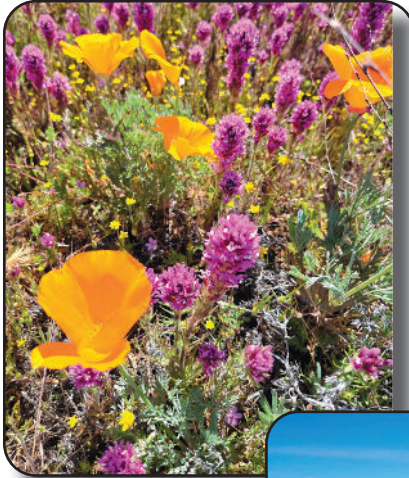
*Photo credit
Doris Lora*

Our next event is the Corral 66 Play Day on April 4. Sign up is at 8am, and we ride at 9am. The cost of the event for members is \$25 and for non-members \$35 for a single day fee. Lunch and awards will follow. Bring your favorite dish to share. For more information, please contact Jamie Rees at (760) 953-7235.

Jamie Rees/President, Corral 66
rocknhorse99@msn.com



New members Amber Ode, Analise Ode and Leann Mitchell joined in on this ride. I believe it was their first ride in the poppies. Members from other corrals also participated, Julie Porter of Corral 14 and Cynthia Landis of Corral 138 shared conversation about their ETI experiences. Cynthia told me about her recent ride at Portal Ridge, part of Transition Habitat.



*Photos credit
Monica Lindsey*

The solar fields continue to cover larger areas of the valley floor. It's good to see additional areas around the buttes have been acquired by land conservancies to preserve and protect the flora and fauna of the area. Hikers, equestrians and photographers are enjoying the area. On the weekends, the fields and dirt roads are filled with visitors and OHVs.

This year is the first year I didn't see the coyote that has a den located high on the south west side of the butte.

Corral 83's second March ride was relocated to Stallion Springs, Mustang Wilderness Trail as the original California City ride temperature became uncomfortably warm. The wildflowers in the Tehachapi are starting to put on their Spring display. Carol Knipp was ride leader. I hope to include some photos from that ride.

Carol Knipp invited a friend and former Corral 83 member, Debra Mayer. It was nice to see her again.



*Lynn Engles
and
Julie Porter
Corral
14
Shiela E
photo*



*Trying to get a group picture was like herding cats.
Photo by Doris Lora*



Photo credit Kim Brandon



Corral 86

Vasquez Vaqueros
Agua Dulce/Canyon Country/Acton
Pres. Janette Beas
(858) 692-6836



June 27: Progressive Brunch & Fundraiser Ride

Elizabeth Bridwell
"C U, Gotta Ride!"

1st: Acton Rangers Gymkhana at Vincent Hill Arena. We had several members compete and others there to cheer them on.

10th: ETI Meeting at Dana's. This was well attended and included updates to the ride calendar.

22nd: Karen's birthday ride at Lost Cyn. 7 riders had a beautiful trip up a lush green canyon, then we meandering along the ridge (nice views & breeze)



Corral 88

Tri Community Horsemen
Phelan/Pinon Hills/Wrightwood
Pres. Noel Cook
(951) 427-9243



We had an amazing gymkhana at the end of February. Our winners were:

AAA

High Point Abbey Welch/ Petra
Reserve Marissa Lawler/Roper

AA

High Point Marissa Lawler/ Dixie
Reserve Kim White/ Ranger

A Youth

High point Mckenzy Festa/ Austin
Reserve Saryah Izpuierdo/ Filly

A Adult

High Point Mary Knight/ Stella
Reserve Ashly n Rush/ Teddy

FC Youth

High Point Alyssa Rush/ Brutus
Reserve Penny Westin/ Mack a Roni

FC Adult

High Point Pam Garon/Zac
Reserve Blue Wolowiec/Arrow

Walk/Trot

High Point Kasanee Guzman/ Micah
Reserve Raelinn Giles/ Angeles In Ten

29th: Palm Sunday

April Schedule

- 5th: Easter Sunday
- 5th: Acton Rangers Gymkhana. Sign-ups begin at 8:00 AM; start time is 9:00 AM.
- 11th: Poppy Ride, led by Karen Dagnan.
- 14th: ETI Meeting at Lalita Share's from 6:30 PM – 8:00 PM. Please RSVP.

Save the Date

- May 3: Crystal Hills Ride
- May 21–25: Pioneertown Camping Karen needs your sign ups!
- 24 June 13: Day of the Horse at Vasquez Rocks

Also a big THANK YOU to all the sponsors who donated for our Raffle:

- Ashley Jackson-Arnold
- Deb Jasper
- Hesperia vet supply
- Kahoots Feed
- J&K feed
- MT Hay
- Feed Barn
- Mikes Hay
- Kelly Charter



Lil spurs High point Alexis Boyd

Turns out our location for this month's ride was the perfect spot to avoid the winds. Nestled within the trees the campsites were protected, and 10 riders enjoyed the view and trails. Lake Perris has some great equestrian campsites, and even though it listed dry camping they did have water (just stack your own hose), and trash can that were emptied daily at each

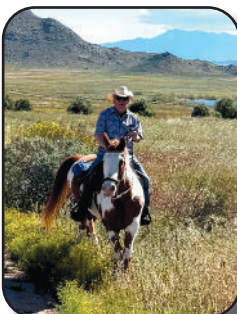
Shady campsites, each with picnic table, trash can, rock firepits, and secure corrals.



Deborah & Noel



Pam & Charles



John on Remy

Carol Kocab on Diamond



Lilly on Sabrina

Scott Kocab on Peppy
Carol Kocab on Diamond



March Gymkhana High Points awards:

High Point as follows:

AAA Marissa/Roper

AA Marissa/Dixie
AA res Kim/ Ranger

A-Youth McKenzie/Austin
A-Youth res Addie/ Spanky

A-Adult Johnny/ Kingston
A-Adult res Leah/Ruby

FCY/ McKenzie/ Rusty

FCA Ashley/ Filly
FCA res Blue/Arrow

WT Kesanee/ Micah
WT res Elizabeth/Mona





out at 9am. Check out our facebook page or contact Dawn Walker at (760) 961-7879 for more info.

Dawn

Corral 118

Simi Valley
Pres. Dean Wageman
(323) 816-1683
www.eti118.com



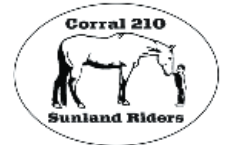
Corral 138

Barrel Springs Rider
Antelope Valley/Palmdale
Pres. Kimberly Dwight
(661) 478-2770



Corral 210

Sunland Riders
Sunland/Gibson Ranch
Pres. Jeanette Provolt
(818) 472-6537



Little spurs results!
High point- Alexis Boyd on Tango Reserve high point - Skylar on cowgirl 3rd - Nakota on Roper.

Lily

Corral 101

Route 101 Horse Show Circuit
Lake View Terrace
Pres. Dawn Surprenant
(661) 433-9069
www.route101horseshow.com



Corral 103

Hesperia Happy Horsemen
Hesperia/Apple Valley
Pres. Dawn Walker
(760) 961-7879



We had a nice ride at Turtle Mountain in March. We had eight riders. The weather cooperated, and it stayed overcast right up until we got back to the trailers. There was just a light breeze, so it was really comfortable riding weather. Everyone said they had a good time including me. Ray Sims took us through some really pretty areas. We saw a tortoise on the trail. There were a few spring flowers. Thanks, Ray.

Coming up on April 19, we have a ride at Arrastre Canyon. It will be aprox. 2 1/2 hours to 3 hours long. There will be some ups and downs. Sign up at 8am and ride

2019 "What Do I Do with My Horse, Cat, Dog, Child, Gerbil in Fire, Flood, and/or Earthquake?"

Are your animals MICROCHIPPED? FIRE SEASON never disappears here in Southern California! MICROCHIPS - A 'must have item' if you must evacuate your property, and you want to get your animal(s) safely back home again. So easy to get through your veterinarian.

Hopefully you still have your copy of this booklet! If you cannot find your copy, you may download this booklet FREE at www.etinational.com, look for Forms & Documents. For information, contact Stephanie Abronson (818) 222 PONY; Stephanie@abronson.com.

ALWAYS BE PREPARED FOR FIRES!

THIS SEASON -- When you drive past the Fire Dept. Forestry Unit on Las Virgenes Rd. and notice that the warning sign says "HIGH FIRE DANGER", take special notice!! We are at risk! Our children are at risk! Our animals are at risk! Our homes are at risk! BE PREPARED!! Get out your copy of: "What Do I Do with My Horse, Cat, Dog, Child, Gerbil in Fire, Flood, and/or Earthquake?"



Every inch of this booklet is helpful whether you own a horse or not.



Trail Rider Award Program T. R. A. P.



**It's TRAP! What is "TRAP" you ask?
TRAP is ETI's Trail Rider Award Program!**

**What does it do?
A heck of a lot more than it sounds!**

If you have any questions about the TRAP Program, call TRAP Chairperson Carol Elliott, (760) 963-8209. All completed logs and CHECKS should be sent to Carol Elliott: 6990 Ord View Rd; Apple Valley Ca 92308. happy2appy@yahoo.com

All your TRAP dues of \$6.00 are due in January.

ETI TRAP keeps computerized logs on how many hours members are riding and where.

In this day and age, when trails are giving way to housing developments, it is crucial that records be kept on trail usage.

ETI Corrals in all areas are finding themselves having to defend their riding areas more and more against encroaching civilization. On several occasions, TRAP records have been instrumental in maintaining trail access.

When a Corral calls ETI TRAP and identifies a specific problem area, TRAP not only provides them with actual riding statistics of usage, but TRAP members are notified to increase usage and support in that particular area.

Documentation from 'trail logs' turned in by TRAP members are proof that trails are being used by equestrians.

ETI TRAP acknowledges hours in the saddle with shoulder patches and pins that can be attached almost anywhere.

Lest we offend the "cart" people, TRAP also counts those non-arena hours of driving time spent on the trails.

How much does all this cost? It's cheap!!! The fee to join TRAP is only \$12.00 (you must maintain current ETI membership); then the TRAP membership is maintained each year for only \$6.00.

You will start by receiving the TRAP main shoulder patch (about the size of a police patch), and your log sheets. As you hit the hour goals (100, 200, 500, etc.), additional patches will be sent to you. When you reach the higher levels, your hours will be acknowledged with pins instead of patches.

Why should the Show people get all the awards?



TRAIL RIDER AWARD Program application



Name _____ **Corral #** _____

Address _____ **City** _____

State _____ **Zip** _____ **Phone**(_____) _____ **Email** _____

New \$12. _____ **Renew \$6.** _____ **ALL DUE January 1 or NOW**

Send with Check, Money Order or Credit Card info _____

NEW Mail to: Carol Elliott, ETI TRAP; 6990 Ord View Rd; Apple Valley CA, 92308



WAIVER & RELEASE
FOR EQUESTRIAN TRAILS, INC., ACTIVITIES
This Is A Waiver of Your Legal Rights, And An Agreement Not To Sue
Serious Injury Or Death May Result From Riding Or Being Near Horses

1. **Participant's Name** (print): _____
Address: _____ **City:** _____ **State:** _____ **Zip:** _____
Telephone: (____) _____ **Email:** _____ **ETI Member** ___ **If Yes, Corral #:** _____

2. **Liability Release.**

In consideration for Equestrian Trails, Inc. ("ETI") allowing me or my child to voluntarily participate in its activities, I agree as follows:

- a. This agreement, waiver and release applies to ETI and to ETI's affiliated Corrals, committees, employees, predecessors, successors, attorneys, insurers, members and volunteers who are working in the course and scope of their duties on behalf of ETI, including its affiliated Corrals, at the time of occurrence of any act or omission which is later alleged to be a cause or contribution to a claim for injury, damages or death ("Released Parties");
- b. I forever release, hold harmless and indemnify Released Parties from liability for any and all claims, demands, causes of action, damages, injuries or death to me, my minor children, my horse and my property, and legal liability of every nature, including the negligent acts or omissions of any Released Parties, whether known or unknown, anticipated or unanticipated, direct or indirect, arising out of participation in the past, present or future ETI activities (including equestrian activities, such as the riding, use of, or being near, horses, whether at an arena, stable or on a trail ride in association with ETI) and I assume all risks of injury or death as set forth in this release;
- c. I shall not bring any lawsuit, action or proceeding against any Released Parties, even if they engage in negligent conduct; and
- d. I make this agreement, waiver and release for and on behalf of myself, my spouse, my child and/or ward, heirs, administrators, successors, representatives and assigns.

3. **Activity Risk.**

I understand that some ETI activities take place in isolated or wilderness areas over rough terrain, and/or trails of unknown condition and others take place on land or in facilities owned and managed by others from whom such land or facilities are borrowed or rented. I understand that the organizers, workers and members involved in ETI activities are not professionals in the horse industry, or in the planning or conducting of trips or camping events, or in other areas of expertise involved in ETI activities. I also understand that horseback riding is a rugged adventure, recreational sport activity. I am aware that there are numerous obvious and non-obvious inherent risks of serious injury or death, or property damage, to me or my horse, which are always present in ETI activities, on or near horses. I understand that pregnant women are specifically advised not to ride horses. I understand that ETI is a non-profit club of private individuals who have come together to support and enjoy recreation-oriented activities.

4. **Nature of Horses.**

I understand that no horse is completely safe, and the Released Parties make no representations or guarantees regarding the safety, training or suitability of any horse. Horses are 5 to 15 times larger, 20 to 40 times more powerful, and 3 to 4 times faster than a human. If I fall from a horse to the ground, it will generally be at a distance of 4 to 6 feet, and the impact will injure me. A horse may divert from its training and act according to its natural survival instincts and may abruptly change directions or speed, trip, slip, fall, stop short, shift its weight, buck, rear, kick, bite, spook, or run from what it perceives to be danger if it is frightened or provoked, or for no reason whatsoever.

5. **Conditions of Nature & Locations.**

I agree that the Released Parties are not responsible for acts, occurrences or elements of nature or a particular location that can injure a person or scare a horse, cause it to trip, fall or react in some other manner. These elements include thunder, lightning, rain, wind, wild and domestic animals, insects, other people and horses, and reptiles which may walk, run, fly near, bite and/or sting a horse or person, irregular footing on groomed or wild land which is subject to constant change according to weather, temperature, natural and manmade



objects. The Released Parties have not inspected, and make no representations or warranties concerning the safety or condition of, any trail, camping site, arena and/or other location of ETI events.

6. Helmet Warning.

I am aware that protective head gear which meets or exceeds the quality standards of the SEI certified and ASTM standard F1163 equestrian helmet, should be purchased and worn by me and/or my child while riding and being near horses, and the wearing of such helmet may reduce the severity of some head injuries and may prevent my serious injury or death as a result of a fall or other occurrence. If I or my minor child do not wear a helmet, it is because we so choose.

I HAVE READ, UNDERSTOOD AND VOLUNTARILY AGREE TO THIS TWO-PAGE WAIVER & RELEASE. I FURTHER AGREE THAT NO ORAL STATEMENTS, REPRESENTATIONS OR INDUCEMENTS APART FROM THIS WRITTEN AGREEMENT HAVE BEEN MADE TO ME TO OBTAIN MY CONSENT.

Dated: _____ Participant's Signature: _____

(Printed Name)

IF PARTICIPANT IS UNDER 18, SIGNATURE OF AGREEMENT BY PARENT OR LEGAL GUARDIAN IS ALSO REQUIRED, AND SUCH PERSON FURTHER AGREES, PURSUANT TO PARAGRAPH 2, ABOVE, TO RELEASE AND INDEMNITY THE RELEASED PARTIES FOR ANY INJURY OR DEATH TO, OR ANY CLAIM BY OR ON BEHALF OF, SUCH MINOR:

Minor's Birth Date: _____

Dated: _____ Signature: _____

Relationship to Minor: _____

(Printed Name of Signor)

ETI Witness (print name): _____ Corral # _____

Description of Event Where Signed: _____



Give the gift that gives all year long...
An ETI Membership!



Contact the ETI Office for more information at (818) 698-6200 or
Join online at
www.etinational.com

Display Your Equestrian Pride!

Contact the ETI office for Stickers at (818) 698-6200 or office@etinational.com



ETI Bell logo
Small 3" x 4" for inside vehicle window \$3.00

8" X 10" for gate or trailer \$6.00

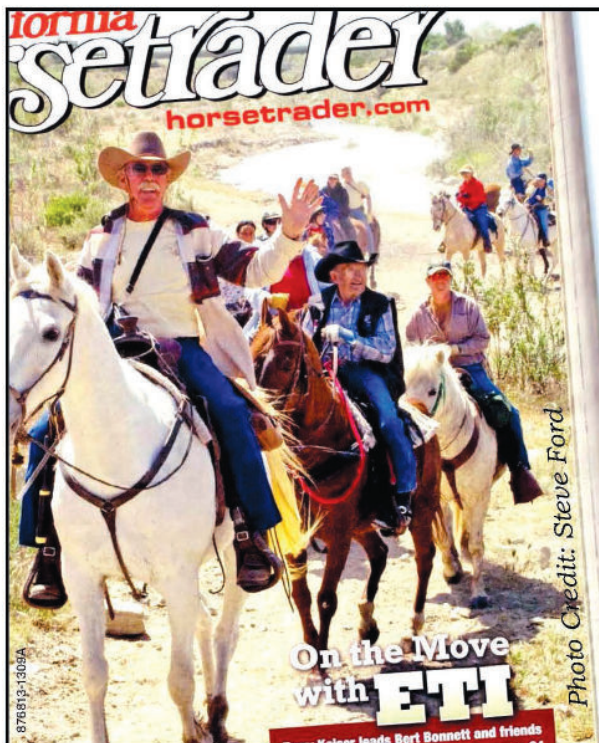


got trails?

Got Trails?
Stickers \$5.00
Available in White or Black



United We Ride \$3.00



California Horsetrader

horsetrader.com

A Better Breed of Advertising™

In print. Online. Socially networked.

Be sure to read your ETI newsletter each month in *California Horsetrader*, and online at horsetrader.com! (Just click on "Read Digital Edition" at the top of the home page)

If you have anything equestrian you'd like to sell or market, call us and ask about our "ETI Member discount"!

Proud sponsors of Equestrian Trails, Inc.

760-546-1184



Non-ETI Size		Corrals Size		ETI Members Size	
Full Page	\$140	Full Page	\$75	Full Page	\$100
1/2 Page	\$75	1/2 Page	\$40	1/2 Page	\$65
1/4 Page	\$50	1/4 Page	\$27	1/4 Page	\$45
Business Card	\$25	Business Card	N/A	Business Card	\$15
Classified (3 lines)	\$10	Classified (3 lines)	\$7	Classified (3 lines)	\$7

Special discount rates for Full and 1/2 page with 12 month contract (4 printed issues & digital issues). Payment in full required.

All insertion rates are costs PER ISSUE and are due at time AD is submitted (unless a contract is signed for the 3X or annual rate).

Ad rates are for camera-ready artwork. Any setup will be charged at \$35 per page, 1/2 tone of pictures are \$10 each. Commercial advertisers, use 85 line-screen. Please submit by email at magazine@etinational.com We are publishing ONLINE every month.

Checklist For Membership Application Cards

Be sure to use the standard cards and not paper forms. If you need more cards please let us know.

Please Check Cards For Completeness And Legibility.

Oftentimes the information on the cards is hard to read. Membership fees are due on the member's anniversary date. Please notify members a month in advance of their anniversary date and send them a Membership Application card to complete and return to your Corral. If they renew late, 90 days or more, their anniversary date will change. Anyone who does not have current membership must pay single event fees at events.

Send cards in A.S.A.P. **Don't hold them.** For **Single** membership, list only the person applying for membership and no one else.

All ETI rides and events require that participants complete both sides of the ETI Waiver and Release.

Non members must complete a Single Event form and pay \$10.00 for an individual for the day or weekend-camping membership. \$5.00 of this is to be sent with the forms back to the ETI office. A family membership for the event is \$20.00; \$10.00 goes to the ETI office.

The Waivers/Release as well as Single Event forms need to be received at the ETI office within two weeks of event.

Basic membership amounts are Family \$50; Senior \$35; Junior \$30.

At Large Memberships are Family \$70; Senior \$50; Junior \$45.

Some Corrals charge additional amounts.

Please contact a Corral or send to ETI, P.O. Box 920668, Slymar, CA 91392

ETI MEMBERSHIP APPLICATION

Name (last): _____ First _____ Corral _____ *

Mailing Address: _____ Spouse: _____

City: _____ State: _____ Zip: _____

Phone: _____ Occupation: _____

Email Address: _____

_____ Junior (under 18) Birthdate _____ Dues Paid _____

_____ Adult (over 18) Dues Paid _____

_____ Family Sr " _____ Jr. # _____ Dues Paid _____

New _____ Renew _____ or Changing from Corral # _____ to Corral # _____

Signature: _____ Date: _____

Parent's signature if Junior only membership-under 18

* CHECK Please send me information for a Corral in my area. ETI (818) 698-6200

ETI National Programs

Horse Shows ETI has a National High Point Circuit which is currently on hiatus. Until then, please contact the ETI office. Non-ETI members can participate in our ETI High Point Shows. But to be a part of the National High Point Circuit you must be an ETI member. You can sign up for the Circuit any time during the season, but must compete a specified number of times in your chosen classes to win awards. Points towards year end awards start accumulating on the date you sign up with the high point program.



The **Junior Ambassador Program** is open to all ETI youth age 7 to 21. Boys are welcome for the Prince and King category. Applications for the program may be obtained by contacting Cheri Ovayan at (818) 335-2884 covayan97@icloud.com. The completed forms are due back by April 2nd with all fees, sponsors, autobiography and pictures. This is a great way for our youth to represent their Corral and ETI. Participants volunteer their time at several mandatory events as well as many horse shows; trail trials, parades, trail dedications, quarterly dinner meetings and fun events just for the Junior Ambassador Court such as the retreat! Contact Michelle or any of the girls who have participated for more info on the fun activities.



Trail Rider Award Program (TRAP) keeps computerized logs on how many hours members are riding. In this day and age, when trails are giving way to housing developments, it is crucial that records be kept on trail usage. ETI Corrals in all areas are finding themselves having to defend their



riding areas more and more against encroaching civilization. On several occasions, TRAP records have been instrumental in maintaining trail access.

ETI TRAP acknowledges hours in the saddle with shoulder patches & pins that can be attached almost anywhere. The fee to join TRAP is only \$12.00 (you must maintain current ETI membership); then the TRAP membership is maintained each year for only \$6.00. You will start by receiving the TRAP main shoulder patch and your log sheets. As you achieve the hour goals additional patches will be sent to you. Carol Elliott is the TRAP chair. Please contact (760) 963-8209 or happy2appy@yahoo.com.

Trail Trials: An ETI Sanctioned Trail Trial consists of a trail ride, usually averaging between two and three hours, with trail obstacles along the way. Obstacles are natural, or simulate naturally occurring conditions for the horse and rider to negotiate. We now have a DVD from a clinic demonstrating obstacles and tips to compete or put on a Trail Trial. It is important to remember that the people doing the judging at sanctioned Trail Trial event are volunteers following the rulebook and are doing the best they can. Safety, control, and common sense are the number one priorities for all ETI sanctioned Trail Trials. Trail Trials are open to ETI members and Non-members. There are three divisions: Juniors for youth 14 years (as of Jan. 1st) and under; Novice and Open. Please contact the ETI office at (818) 698-6200 office@etinational.com.

